

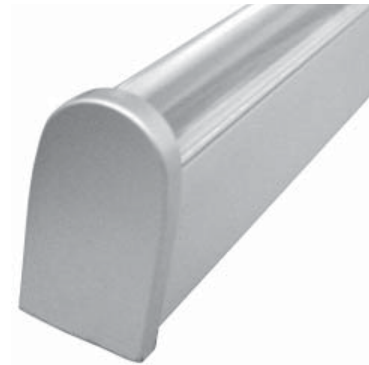
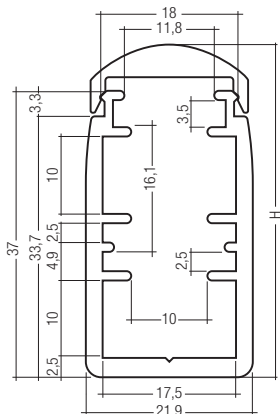
For more information please contact

lightmoves (03) 9701 2500
info@lightmoves.com.au

138-146 Browns Rd, Noble Park VIC 3174

RoHS

**TALEX(profile Z202
Mounting profile**



TALEX(profile Z202 with cover and end cap

- versatile mounting profile for contours and edge lighting
- suited for TALEX strips (in combination with TALEX(profile Z204) and TALEX(spaceLED
- compact profile
- insertion slot for acrylic stripes
- wide accessory range
 - covers
 - insertion/cooling profile
 - end caps
 - linear lenses

TALEX

type	article number	material	colour	dimensions HxWxL mm	weight/piece kg	packing unit ②
Z202 mounting profile	24138849	aluminium	anodised nature	37.6x21.9x2,000	1.25	5

TALEX accessories ③

type	article number	material	colour	height H mm	dimensions (WxL) mm	packing unit ②
Z204 insertion/cooling profile ④	24128850	aluminium	anodised nature	5	17.3x2,000	5
Z220 cover white	24138736	PMMA	white	44	20.5x2,000	5
Z221 cover frosted	24138737	PMMA	semi-transparent	44	20.5x2,000	5
Z222 cover transparent	24138738	PMMA	transparent	44	20.5x2,000	5
O200 linear lens 30° ①	24139172	PMMA	transparent	44	20.5x2,000	5
O200 linear lens 60° ①	24139164	PMMA	transparent	43	20.5x2,000	5
O200 linear lens 90° ①	24139165	PMMA	transparent	42	20.5x2,000	5
O200 linear lens 30° frosted ①	24139175	PMMA	semi-transparent	44	20.5x2,000	5
O200 linear lens 60° frosted ①	24139176	PMMA	semi-transparent	43	20.5x2,000	5
O200 linear lens 90° frosted ①	24139177	PMMA	semi-transparent	42	20.5x2,000	5
End cap for TALEX(profile Z202	24138969	PMMA	metallic grey	46	26 x 6	10

- ① For details please refer to the corresponding data sheets.
- ② Delivery in packing units only.
- ③ The cover may not be exposed to any mechanical stresses. If it is exposed to vibrations or wind the mounting plate can detach from the fixture. It must therefore be additionally secured.
- ④ Details see page 2.
- ⑤ Data are valid for applications with cover and end caps and with sufficient air circulation (convection). Compliance with the max. permissible temperature of the TALEX(module at the tc point (see data sheet) must be ensured in the thermally stable state. For further information on installation please refer to the brochure entitled "TALEX installation instructions".

Cooling properties:

1 cm Z202 = 7 cm² surface

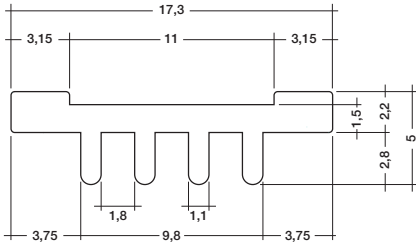
Recommended profile length in cm ⑤

ta °C	P110/111	P108	P118	P130/131	P211-2 350mA	P211-2 700mA
20	20	20	20	10	4	6
30	20	20	20	10	4	7
40	20	20	20	13.5	5	10
50	20	27	32	20	7	16

For more information please contact
lightmoves (03) 9701 2500
 info@lightmoves.com.au
 138-146 Browns Rd, Noble Park VIC 3174

RoHS

**TALEX(profile Z204
 Insertion/cooling profile**



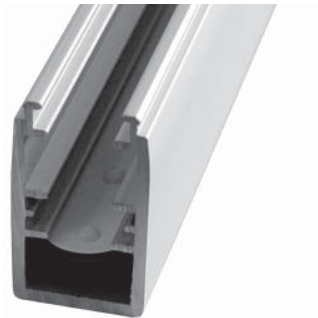
- insertion for TALEX(profile Z202/203
- cooling profile for TALEX strips with a maximum width of 10 mm
- compact profile 5 x 17 mm

TALEX

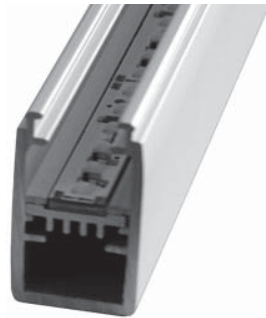
Typ	article number	material	colour	dimensions HxWxL mm	weight/piece kg	packing unit ①
Z204 insertion/cooling profile	24138850	aluminium	anodised nature	2.2x17.3x2,000	0.22	5

① Delivery in packing units only.

Flexible usage of TALEX(profile Z202



insertion option for TALEX(spaceLED



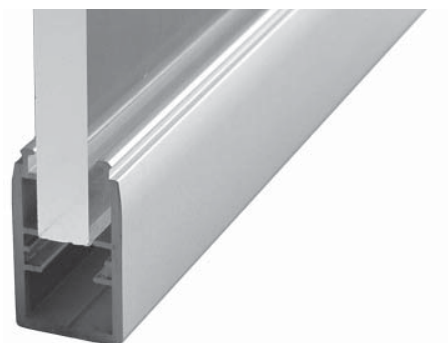
insertion option for TALEX(profile Z204



insertion option for acrylic strips



snap in mounting of TALEX(cover Z220/221/222



edge lit application with PMMA sheets