

SPACELINE 22-P130

ELEGANT HIGH POWER LINEAR LED

3W

17W

DESCRIPTION

The Spaceline 22-P130 is a compact and elegant linear LED luminaire range designed for high power lighting applications.

Utilising Tridonic's Talexx P130-3 LED light modules, it's available in warm, neutral or daylight white, and is perfect for architectural features, cove lighting, under-shelf lighting, fresh food lighting and much more.

FEATURES

5-year Electrical System Warranty

Excellent colour consistency MacAdams SDCM ≤ 4

Long life 50,000 hours (L70)

Low voltage 24VDC constant voltage

Various beam angles* available using lens covers
30°/60°/90°/120°

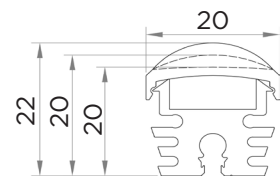
IP Rating IP20

Max. length 1m standard (other lengths available on request)

Extrusion Anodised aluminium

Mounting Brackets for easy installation. Available in both adjustable and clip-in fixed angles (0° flat, 15°, 30°, 45°, 60°) to facilitate the mounting of the luminaire in any working position

Dimmable via Space Cannon's control series or compatible third-party drivers



ORDERING CODE ¹	DESCRIPTION*	POWER WATTAGE	LUMEN OUTPUT	CRI
240400-XX-YY	SPACELINE 22-6P130-3 LINEAR LED 2700K WARM WHITE 1m	14.4W	1200	90
240401-XX-YY	SPACELINE 22-6P130-3 LINEAR LED 3000K WARM WHITE 1m	14.4W	1590	85
240402-XX-YY	SPACELINE 22-6P130-3 LINEAR LED 4000K NEUTRAL WHITE 1m	14.4W	1590	85
240403-XX-YY	SPACELINE 22-6P130-3 LINEAR LED 6500K NEUTRAL WHITE 1m	14.4W	1710	80
	*OTHER LENGTHS/COMBINATIONS AVAILABLE ON REQUEST			



Adjustable Bracket



0° Fixed Bracket



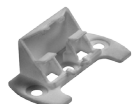
15° Fixed Bracket



30° Fixed Bracket



45° Fixed Bracket



60° Fixed Bracket

¹ Ordering codes:

XX = Beam Angle (30 = 30°, 60 = 60°, 90 = 90°, 120 = 120°)

YY = Cover (CL = Clear, FR = Frosted, WH = White)