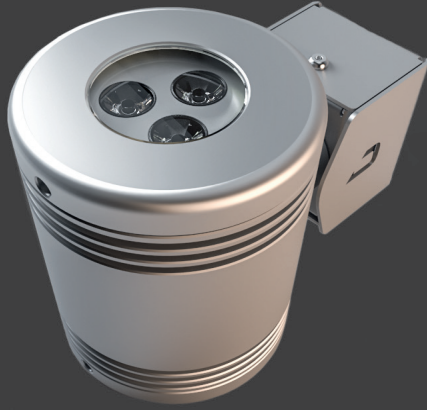
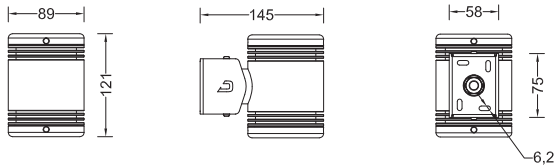


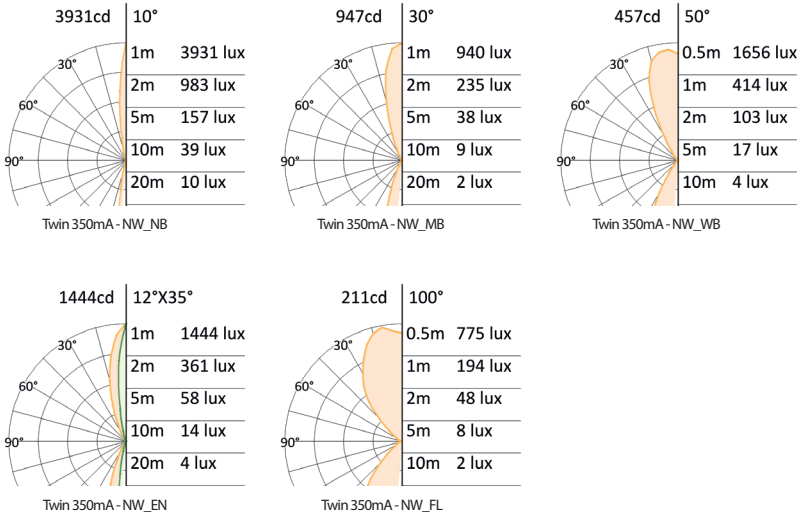
# Twin



## Dimensions (mm)



## Photometric curve



## Technical specification

Source:  
High power LED  
LED Count:  
6  
LED life time:  
>50,000 hrs (L70 B50)  
Source flux:  
730 lm (NW)  
Luminaire efficiency:  
74 lm/W (NW\_NB)  
Input power:  
8W  
Supply voltage:  
230V 50/60Hz  
Driver:  
Integrated  
Insulation class:  
I (Class II upon request)  
Protections:  
Short circuit, overload, over voltage and thermal  
Colour:  
White (2200K to 6000K), Red, Green, Blue, Amber  
Emission:  
PMMA precision optics 10°, 30°, 50°, 100°, 12°x35°  
Working position:  
Any  
Fixation:  
2 elongated holes Ø6.5mm and 1 hole Ø6.5mm  
IP rating:  
IP65 and IP67  
IK rating:  
IK 08  
Storage:  
-50°C to +80°C  
Connection:  
Free cable, 0.8 m length  
Construction:  
Anodised aluminum body, tempered front glass, hermetic sealing by silicone gasket, AISI 316 stainless steel brackets, stainless steel screw  
Weight:  
1.7 kg

## Code table

product	size	finishing	control	voltage	color	optics
TWN	06	AN	X	230	SW	NB
TWN= Twin	06= 6 LEDs	AN= Anodised aluminium	X= Without DMX	230= 230V 50/60 Hz	SW = 2200 K WW= 3000 K NW = 4000 K CW = 6000 K MR = Red MG= Green MB = Blue MA = Amber	NB = Narrow beam MB = Medium beam WB = Wide beam EN = Elliptical narrow FL = Flood optics

Specification are subject to change without notice.  
rev . datasheet Twin 1015EN

Space Cannon Australia Pty Ltd  
1/169 Beavers Road | Northcote | Vic | 3070  
T (+61 3) 9486 5366 | sales@spacecannon.com.au  
www.spacecannon.com.au

Authorised Dealer