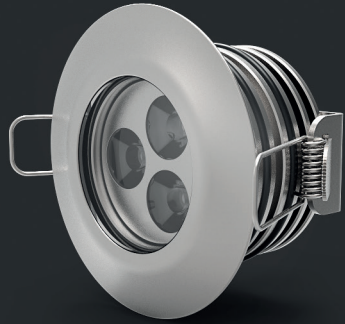


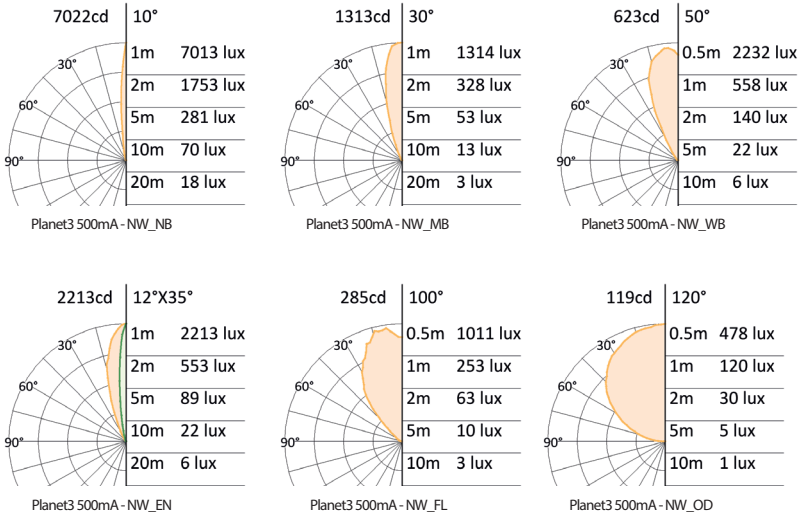
Planet 3



Dimensions (mm)



Photometric curve



Technical specification

Source:
High power LED
LED Count:
3
LED life time:
>50,000 hrs (L70 B50)
Source flux:
490 lm (NW)
Luminaire efficiency:
71.5 lm/W (NW_NB)
Input power:
5.5 W
Supply current:
500 mA
Driver:
Remote
Insulation class:
III
Colour:
White (2200 K to 6000 K)
Emission:
PMMA precision optics 10°, 30°, 50°, 100°, 12° x 35° or 120°
diffusing glass
Working position:
Recessed downlight
Fixation:
Spring mount, reversible, up to 20 mm thick panel
IP rating:
IP65 and IP67
Storage:
-50°C to +80°C
Connection:
Free end cable, 0.3 m length
Construction:
Anodised aluminum body, tempered front glass, hermetic
sealing by silicone, anodised aluminum front plate
Weight:
0.3 kg

Code table

product	size	finishing	control	voltage	color	optics
PLT	03	AN	S	000	SW	NB
PLT= Planet	03= 3 LEDs	AN= Anodised aluminium	S= Separated	000= Constant current	SW= 2200 K WW= 3000 K NW= 4000 K CW= 6000 K	NB= Narrow beam MB= Medium beam WB= Wide beam EN= Elliptical narrow FL= Flood optics OD= Opal diffuse

Specification are subject to change without notice.
rev . datasheet Planet3 1215EN

Space Cannon Australia Pty Ltd
1/169 Beavers Road | Northcote | Vic | 3070
T (+61 3) 9486 5366 | sales@spacecannon.com.au
www.spacecannon.com.au

Authorised Dealer