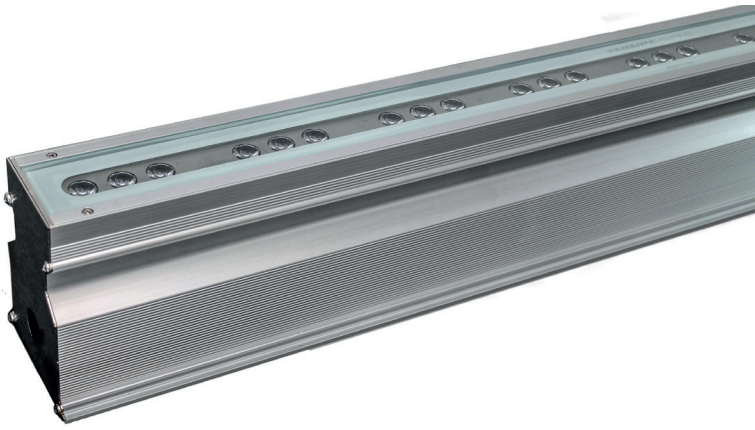
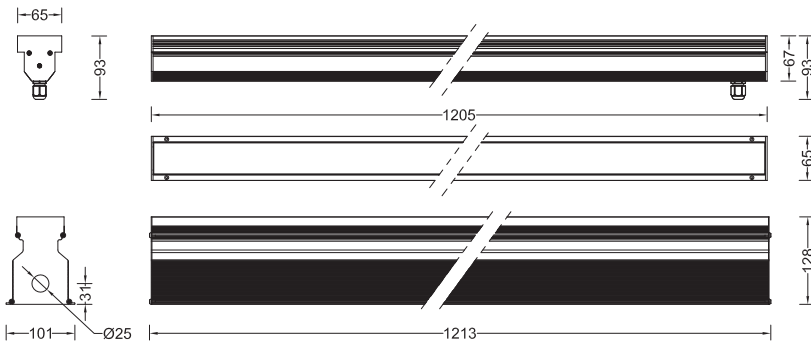


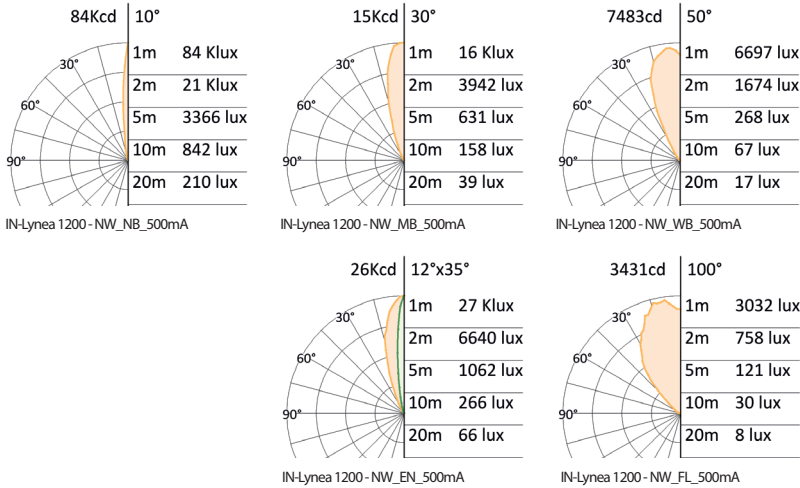
IN-Lynea 1200



Dimensions (mm)



Photometric curve



Code table

product	size	finishing	control	voltage	color	optics
INA	12	AN	X	230	SW	NB
INA= IN-Lynea	12= 1200mm	AN= Anodised aluminium	X= Without DMX D= DMX	230= 230V 50/60 Hz	SW = 2200 K WW= 3000 K NW = 4000 K CW = 6000 K MR = Red MG = Green MB = Blue MA = Amber RW = RGB+White RA = RGB+Amber RT = RGB TW = SW to CW	NB = Narrow beam MB = Medium beam WB = Wide beam EN = Elliptical narrow FL = Flood optics

Specification are subject to change without notice.
rev . datasheet IN-lynea 1200 0116EN

Space Cannon Australia Pty Ltd
1/169 Beavers Road | Northcote | Vic | 3070
T (+61 3) 9486 5366 | sales@spacecannon.com.au
www.spacecannon.com.au

Authorised Dealer

Technical specification

Source:
High power LED
LED Count:
36 (mono, RGB, TW), 48 (RGBW, RGBA)
LED life time:
>50.000 hrs (L70 B50)
Source flux:
5855lm (NW)
Luminaire efficiency:
69.9 Lm/W (NW_NB)
Input power:
68W
Supply voltage:
230V 50/60Hz
Driver:
Integrated (standard) or remote (upon request)
Insulation class:
I
Protections:
Short circuit, overload, over voltage, reverse polarity and thermal protection
Colour:
White (2200K to 6000K), RGB, RGBW, RGBA, Tunable White (2200K to 6000K), Red, Green, Blue, Amber
Emission:
PC precision optics 10°, 30°, 50°, 12°x35°, 100°
Working position:
Recessed
IP rating:
IP65 and IP67
IK rating:
IK 08
Storage:
-50°C to +80°C
Control:
On/Off or standard DMX-512A/RDM
DMX channels:
1 (mono), 3 (RGB, TW), 4 (RGB+W) and (RGB+A)
Connection:
IP 67 connector IN and OUT
Construction:
Anodised aluminum extruded body, pressure compensation valve, tempered front glass, hermetic sealing by silicone gasket, stainless steel screws and bracket
Weight:
4.8 Kg