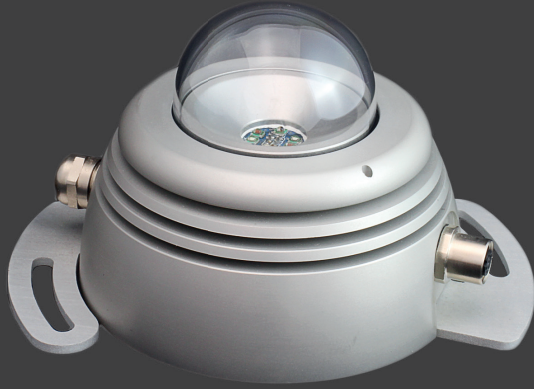
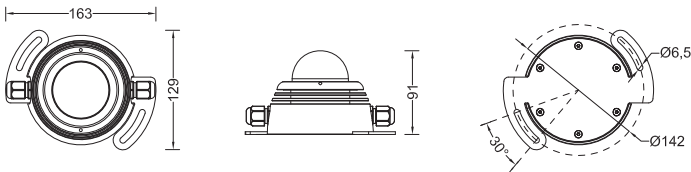


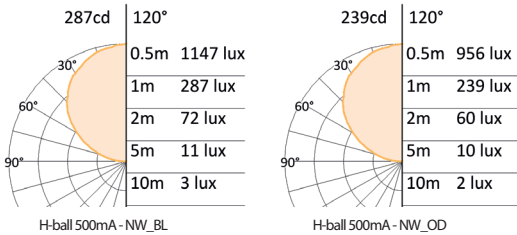
H-ball



Dimensions (mm)



Photometric curve



Technical specification

Source:
High power LED
LED Count:
6
LED life time:
>50,000 hrs (L70 B50)
Source flux:
980 lm (NW)
Luminaire efficiency:
88 lm/W (NW_BL)
Input power:
10W
Supply voltage:
48 VDC
Driver:
Remote power supply, integrated logic and regulator
Insulation class:
III
Protections:
Thermal
Colour:
White (2200K to 6000K), RGB, Tunable White (from 2200K to 6000K), Red, Green, Blue, Amber
Emission:
120° transparent or opal dome
Working position:
Any
Fixation:
2 elongated holes Ø6.5mm
IP rating:
IP65 and IP67
IK rating:
IK 08
Storage:
-50°C to +80°C
Control:
Standard DMX-512A/RDM
DMX channels:
1 (mono), 3 (RGB, TW)
Connection:
Daisy chain cabling, IP67connectors
Construction:
Anodised aluminum body, UV-stable polycarbonate dome, hermetic sealing by silicone and EPDM gasket, Inox screws
Weight:
1.0 kg

Code table

product	size	finishing	control	voltage	color	optics
HBL	06	AN	D	048	SW	BL
HBL= H-Ball	06=LEDs	AN= Anodised aluminium	D= DMX	048= 48VDC	SW = 2200 K WW= 3000 K NW = 4000 K CW = 6000 K MR = Red MG = Green MB = Blue MA = Amber RT = RGB TW = SW to CW	BL = Bare Led OP = Opal diffuse

Specification are subject to change without notice.
rev . Datasheet H-ball 1115EN

Space Cannon Australia Pty Ltd
1/169 Beavers Road | Northcote | Vic | 3070
T (+61 3) 9486 5366 | sales@spacecannon.com.au
www.spacecannon.com.au

Authorised Dealer