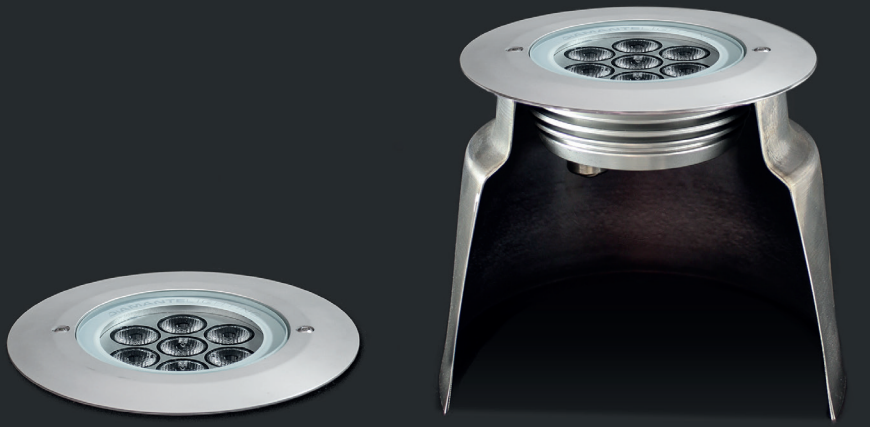
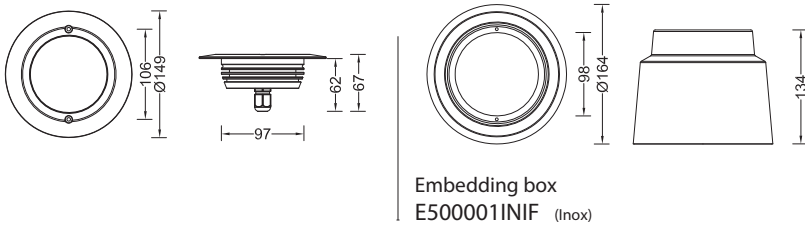


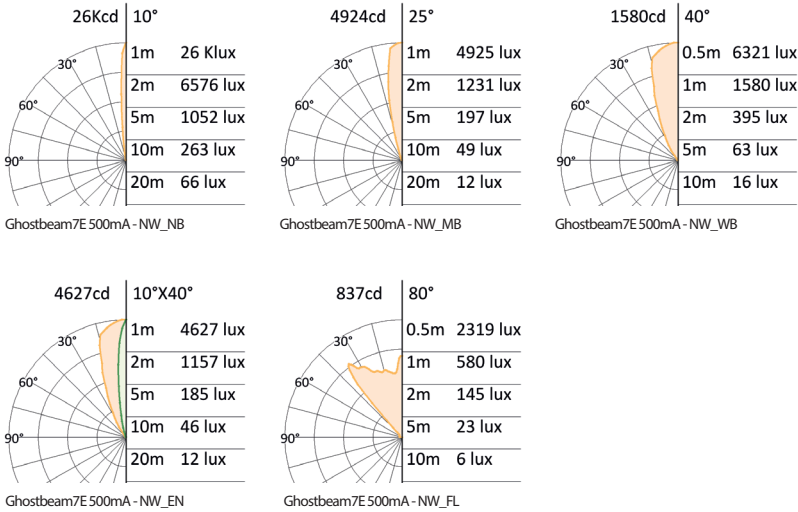
# Ghostbeam7 Essential



## Dimensions (mm)



## Photometric curve



## Technical specification

- Source: High power LED
- LED Count: 7
- LED life time: >50,000 hrs (L70 B50)
- Source flux: 1140 lm (NW)
- Luminaire efficiency: 73 lm/W (NW\_NB)
- Input power: 13W
- Supply current: 500mA
- Driver: Remote
- Insulation class: III
- Colour: White (2200K to 6000K), RGBW, RGBA, Tunable White (2200K to 6000K), Red, Green, Blue, Amber
- Emission: PMMA precision optics 10°, 25°, 40°, 10°x40°, reflector 80°
- Working position: Recessed
- Fixation: 2 Holes Ø4.5mm
- IP rating: IP65 and IP67
- IK rating: IK 08
- Storage: -50°C to +80°C
- Maximum glass temp.: <35° (TA=20°)
- Control: No control (On/Off) or via control accessories (DMX-512A)
- Connection: Free end cables, 0.8m length
- Construction: Anodised aluminum body, tempered front glass, hermetic sealing by silicone sealing, stainless steel screws
- Weight: 0.7 kg

## Code table

product	size	finishing	control	voltage	color	optics
GHB	07	AN	S	000	SW	NB
GHB= Ghostbeam	07= 7 LEDs	AN= Anodised aluminium	S= Separated	000= Constant current	SW = 2200 K WW= 3000 K NW= 4000 K CW= 6000 K MR = Red MG= Green MB = Blue MA = Amber RW = RGB+White RA = RGB+Amber TW = SW to CW	NB = Narrow beam MB = Medium beam WB = Wide beam EN = Elliptical narrow FL = Flood optics

Specification are subject to change without notice.  
rev . datasheet Ghostbeam7E 1215EN

Space Cannon Australia Pty Ltd  
1/169 Beavers Road | Northcote | Vic | 3070  
T (+61 3) 9486 5366 | sales@spacecannon.com.au  
www.spacecannon.com.au

Authorised Dealer