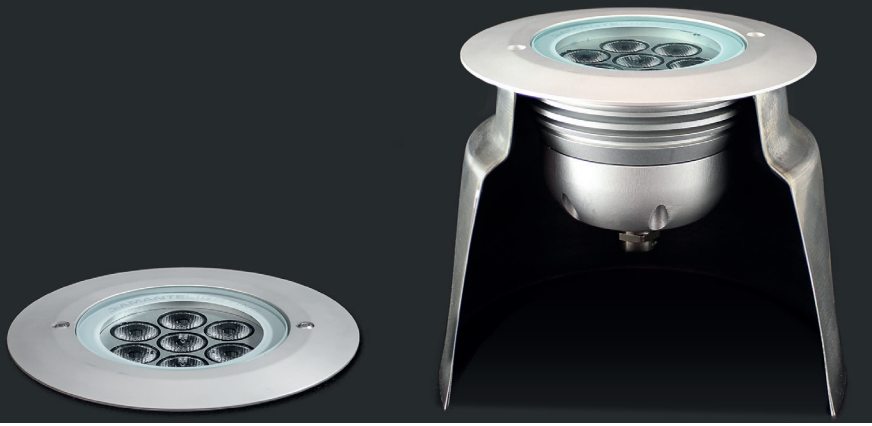
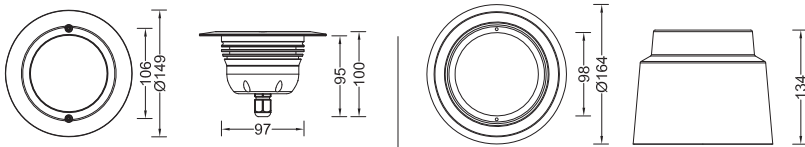


Ghostbeam7 Compact

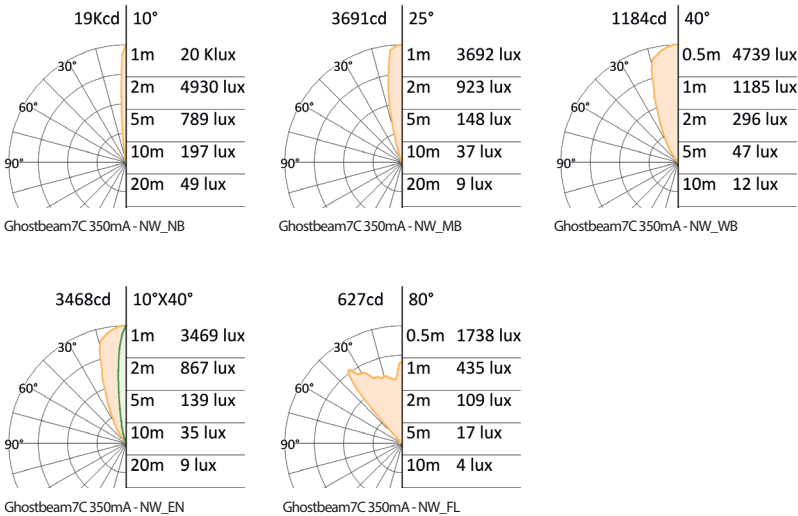


Dimensions (mm)



Embedding box
E500001INIF (Inox)

Photometric curve



Technical specification

Source:
High power LED
LED Count:
7
LED life time:
>50,000 hrs (L70 B50)
Source flux:
855 lm (NW)
Luminaire efficiency:
71 lm/W (NW_NB)
Input power:
10W
Supply voltage:
230V 50/60Hz
Driver:
Integrated
Insulation class:
II
Protections:
Short circuit, overload, over voltage and thermal
Colour:
White (2200K to 6000K), Red, Green, Blue, Amber
Emission:
PMMA precision optics 10°, 25°, 40°, 10°x40°, reflector 80°
Working position:
Recessed
Fixation:
2 Holes Ø4.5mm
IP rating:
IP65 and IP67
IK rating:
IK 08
Working temperature:
Operating: -30°C to +50°C
Storage: -50°C to +80°C
Maximum glass temp.:
<35° (TA=20°)
Connection:
Free end cable, 0.8m length
Construction:
Anodised aluminum body, tempered front glass, hermetic sealing by EPDM gasket and silicone sealing, stainless steel screws
Weight:
1.0 kg

Code table

product	size	finishing	control	voltage	color	optics
GHB	07	AN	X	230	SW	NB
GHB= Ghostbeam	07= 7 LEDs	AN= Anodised Aluminium	X= Without DMX	230= 230V 50/60 Hz	SW= 2200 K WW= 3000 K NW= 4000 K CW= 6000 K MR= Red MG= Green MB= Blue MA= Amber	NB= Narrow beam MB= Medium beam WB= Wide beam EN= Elliptical narrow FL= Flood optics

Specification are subject to change without notice.
rev . datasheet Ghostbeam7C.indd 0616EN

Space Cannon Australia Pty Ltd
1/169 Beavers Road | Northcote | Vic | 3070
T (+61 3) 9486 5366 | sales@spacecannon.com.au
www.spacecannon.com.au

Authorised Dealer