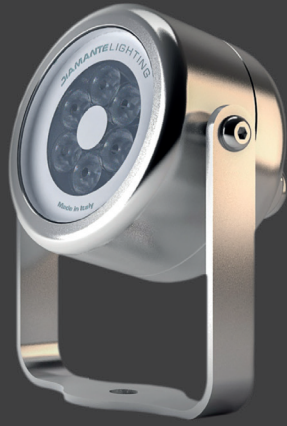
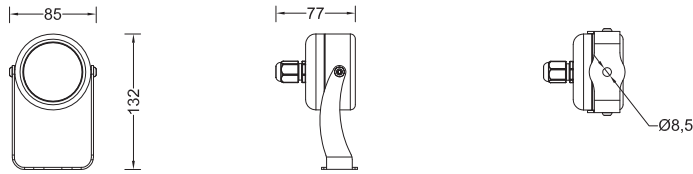


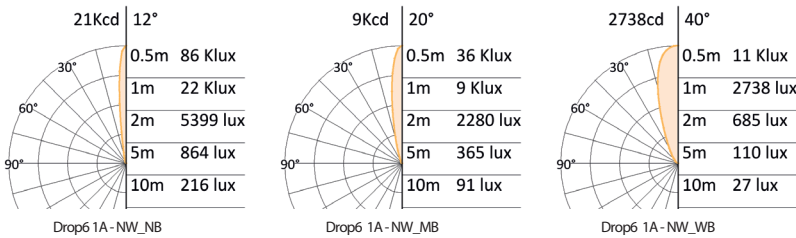
Drop 6



Dimensions (mm)



Photometric curve



Technical specification

Source:
High power LED
LED Count:
6
LED life time:
>50,000 hrs (L70 B50)
Source flux:
1745 lm (NW)
Luminaire efficiency:
60 lm/W (NW_NB)
Input power:
25 W (mono), 16 W (RGB)
Supply voltage:
24 VDC
Driver:
Remote power supply, integrated logic or regulator
Insulation class:
III
Protections:
Short circuit, overload, over voltage and thermal
Colour:
White (2200 K to 6000 K), RGB, Tunable White (2200 K to 6000 K), Red, Green, Blue, Amber
Emission:
PMMA precision optics 12°, 20°, 40°
Working position:
Permanent underwater
Fixation:
Hole Ø8.5 mm
IP rating:
IP68
IK rating:
IK 10
Storage:
-50°C to +80°C
Control:
On/Off or DMX-512A/RDM
DMX channels:
1 (mono), 3 (RGB, TW)
Connection:
Free end cable, 3 m standard length
Construction:
AISI 316 stainless steel body, tempered front glass, hermetic sealing silicone sealing, stainless steel screws, stainless steel AISI 316 accessories and bracket
Weight:
1.1 Kg

Code table

product	size	finishing	control	voltage	color	optics
DRP	06	SS	R	024	SW	NB
DRP= Drop	06=LEDs	SS= Stainless steel	R= Regulator D= DMX	024= 24Vdc	SW = 2200 K WW= 3000 K NW= 4000 K CW= 6000 K MR = Red MG = Green MB = Blue MA = Amber RT = RGB TW = SW to CW	NB = Narrow beam MB = Medium beam WB = Wide beam

Specification are subject to change without notice.
rev . Datasheet Drop6 1115EN

Space Cannon Australia Pty Ltd
1/169 Beavers Road | Northcote | Vic | 3070
T (+61 3) 9486 5366 | sales@spacecannon.com.au
www.spacecannon.com.au

Authorised Dealer