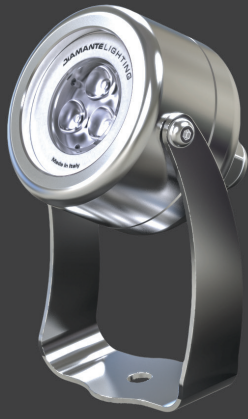
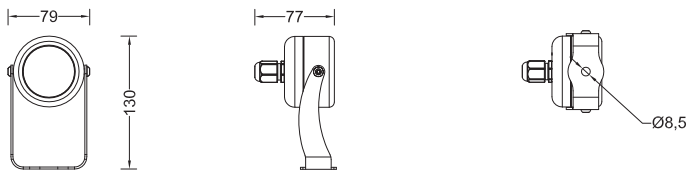


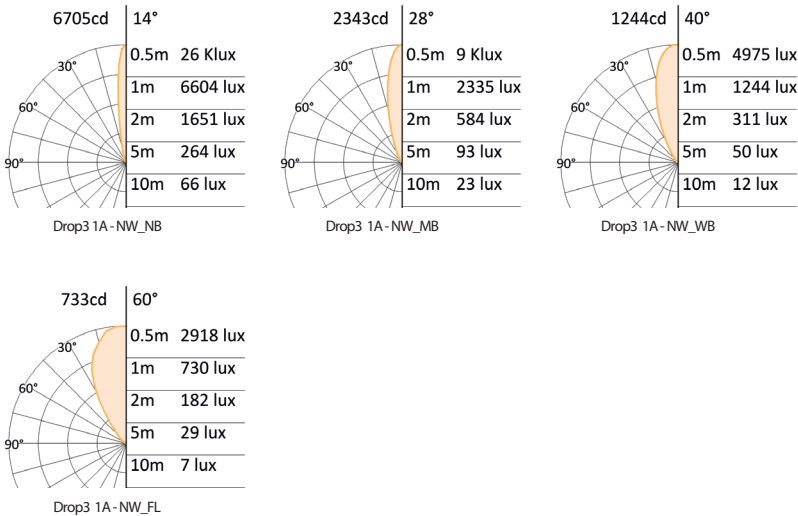
# Drop 3



## Dimensions (mm)



## Photometric curve



## Technical specification

Source:  
High power LED  
LED Count:  
3  
LED life time:  
>50,000 hrs (L70 B50)  
Source flux:  
870 lm (NW)  
Luminaire efficiency:  
60 lm/W (NW\_NB)  
Input power:  
12 W (On/Off), 8 W (RGB)  
Supply voltage:  
24 VDC  
Driver:  
Remote power supply, integrated logic or regulator  
Insulation class:  
III  
Protections:  
Short circuit, overload, over voltage and thermal  
Colour:  
White (2200 K to 6000 K), RGB, Tunable White (2200 K to 6000 K), Red, Green, Blue, Amber  
Emission:  
PMMA precision optics 14°, 28°, 40°, 60°  
Working position:  
Permanent underwater  
Fixation:  
Hole Ø8.5 mm  
IP rating:  
IP68  
IK rating:  
IK 10  
Storage:  
-50°C to +80°C  
Control:  
On/Off or DMX-512A/RDM  
DMX channels:  
1 (mono), 3 (RGB, TW)  
Connection:  
Free end cable, 3 m standard length  
Construction:  
AISI 316 stainless steel body, tempered front glass, hermetic sealing silicone sealing, stainless steel screws, stainless steel AISI 316 accessories and bracket  
Weight:  
0.9 Kg

## Code table

product	size	finishing	control	voltage	color	optics
DRP	03	SS	R	024	SW	NB
DRP= Drop	03=LEDs	SS= Stainless steel	R= Regulator D= DMX	024= 24VDC	SW = 2200 K WW= 3000 K NW= 4000 K CW= 6000 K MR = Red MG= Green MB = Blue MA = Amber RT = RGB TW = SW to CW	NB = Narrow beam MB = Medium beam WB = Wide beam FL = Flood optics

Specification are subject to change without notice.  
rev . Datasheet Drop3 1115EN

Space Cannon Australia Pty Ltd  
1/169 Beavers Road | Northcote | Vic | 3070  
T (+61 3) 9486 5366 | sales@spacecannon.com.au  
www.spacecannon.com.au

Authorised Dealer