

## important installation notes

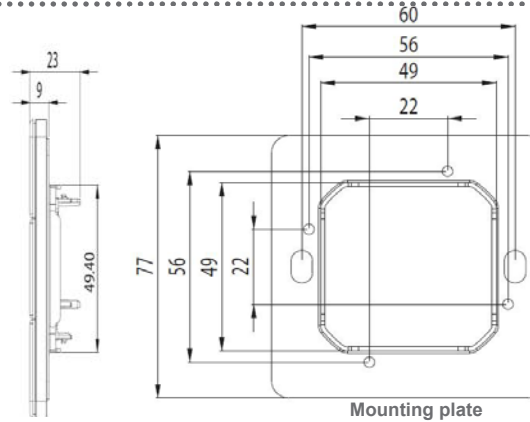
**Full Antumbra device** – For a complete installation, the Application module needs to be installed with an approved Communication module. The Application module is not capable of being terminated to any network without being used with a Communication module. Each application module may need its own Communication module to function correctly. DO NOT connect to mains wiring.

**Wall Boxes** – The Application module has been designed to fit into most standard EU wall boxes (not supplied). To comply with local electrical standards, this product may be required to be installed into a metal wall box. Contact your distributor for details.

### Installation recommendation –

- Units are for indoor use only. Devices may be installed vertically or horizontally. Ensure that one edge of the temperature openings on the rim are facing down.
- Ensure that the device is located in an appropriate location so that it will be easily accessible to the user.
- Make sure the device will not be covered by doors, blinds or furniture that may hinder the device being used.
- Never over tighten screws. When using an electrical screwdriver, do not use hammer setting or set torque above 0.8Nm for Mounting plate or 0.6Nm for Base.
- The Antumbra panel produces an automated wall light wash effect. This effect may expose inconsistencies in plaster and painting work. Extra care should be given around panel areas to ensure smooth, consistent and even finish.

## dimensions



Total outer dimensions of panel are 88 x 88 mm. When cutting mounting hole into wall, care must be taken not to exceed the outer dimensions of the mounting plate. Details of dimensions for communication module requirements can be found in its own installation document. Refer to communication module installation manual for details of full dimensions.

# PHILIPS

## PABPE

Philips Antumbra Button Panel European Installation Manual  
Rev A



Philips  
Unit 6, 691 Gardeners Road Mascot NSW 2020 Australia  
t +61 8338 9899 f +61 2 8338 9333 [dynalite.info@philips.com](mailto:dynalite.info@philips.com)  
ABN 33 097 246 921 [philips.com/dynalite](http://philips.com/dynalite)

## important installation notes

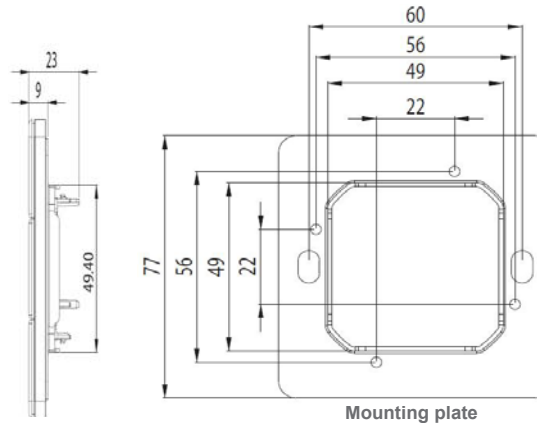
**Full Antumbra device** – For a complete installation, the Application module needs to be installed with an approved Communication module. The Application module is not capable of being terminated to any network without being used with a Communication module. Each application module may need its own Communication module to function correctly. DO NOT connect to mains wiring.

**Wall Boxes** – The Application module has been designed to fit into most standard EU wall boxes (not supplied). To comply with local electrical standards, this product may be required to be installed into a metal wall box. Contact your distributor for details.

### Installation recommendation –

- Units are for indoor use only. Devices may be installed vertically or horizontally. Ensure that one edge of the temperature openings on the rim are facing down.
- Ensure that the device is located in an appropriate location so that it will be easily accessible to the user.
- Make sure the device will not be covered by doors, blinds or furniture that may hinder the device being used.
- Never over tighten screws. When using an electrical screwdriver, do not use hammer setting or set torque above 0.8Nm for Mounting plate or 0.6Nm for Base.
- The Antumbra panel produces an automated wall light wash effect. This effect may expose inconsistencies in plaster and painting work. Extra care should be given around panel areas to ensure smooth, consistent and even finish.

## dimensions



Total outer dimensions of panel are 88 x 88 mm. When cutting mounting hole into wall, care must be taken not to exceed the outer dimensions of the mounting plate. Details of dimensions for communication module requirements can be found in its own installation document. Refer to communication module installation manual for details of full dimensions.

# PHILIPS

## PABPE

Philips Antumbra Button Panel European Installation Manual  
Rev A

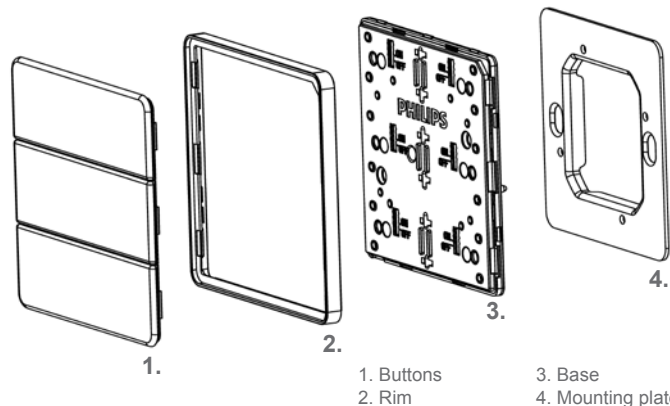


Philips  
Unit 6, 691 Gardeners Road Mascot NSW 2020 Australia  
t +61 8338 9899 f +61 2 8338 9333 [dynalite.info@philips.com](mailto:dynalite.info@philips.com)  
ABN 33 097 246 921 [philips.com/dynalite](http://philips.com/dynalite)

## assembling the components

1. Fix Mounting plate to wall box or mounting bracket using the two longer screws provided. DO NOT use any other screws as they may damage the panel.
2. Base and Rim are supplied pre assembled. The rim can be removed by gently pulling the sides forward. The Communication module is mounted into the back of the base unit. Use locating pins can to ensure the correct orientation of the modules. Using the location pin the two modules should click together with little resistance.
3. Ensure that the network is connected correctly to the Communication module. Refer to the Communication module installation instructions for these termination details.
4. The base can now be fixed to the mounting plate using the two shorter screws provided. DO NOT use any other screws as they may damage the panel. Ensure the panel is correctly orientated before fixing to mounting plate.
5. Set the blue switches to match the number of buttons required for the panel location. ON = mechanical button available OFF = mechanical button disabled.
6. The buttons can now be mounted by clicking them in the middle first. After, cover the panel with protective cover until project is ready to be handed over.

## components



Not shown are the long and short screws or the separately supplied Communication module required for the full installation.

## specifications

### Supply:

Device power must be supplied from approved Communication module. Application module is a SELV / Class 2 device.

### Operating Environment:

-5° to 50°C / 25° to 122°F ambient temperature  
0% to 90% RH non-condensing

### Storage and Transport Environment:

-25° to 70°C / -13° to 158°F ambient temperature  
0% to 90% RH non-condensing

### IP rating: IP22

### Connection to approved Communication module:

26 pin header connection.

### Compliance:

CE, C-Tick

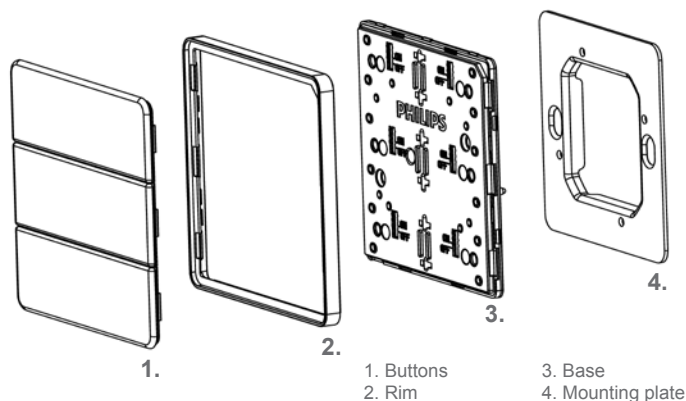
Specifications and design subject to change without notice.

Not to be reproduced without permission. A detailed long description of the Antumbra installation is available from the website [philips.com/dynalite](http://philips.com/dynalite)

## assembling the components

1. Fix Mounting plate to wall box or mounting bracket using the two longer screws provided. DO NOT use any other screws as they may damage the panel.
2. Base and Rim are supplied pre assembled. The rim can be removed by gently pulling the sides forward. The Communication module is mounted into the back of the base unit. Use locating pins can to ensure the correct orientation of the modules. Using the location pin the two modules should click together with little resistance.
3. Ensure that the network is connected correctly to the Communication module. Refer to the Communication module installation instructions for these termination details.
4. The base can now be fixed to the mounting plate using the two shorter screws provided. DO NOT use any other screws as they may damage the panel. Ensure the panel is correctly orientated before fixing to mounting plate.
5. Set the blue switches to match the number of buttons required for the panel location. ON = mechanical button available OFF = mechanical button disabled.
6. The buttons can now be mounted by clicking them in the middle first. After, cover the panel with protective cover until project is ready to be handed over.

## components



Not shown are the long and short screws or the separately supplied Communication module required for the full installation.

## specifications

### Supply:

Device power must be supplied from approved Communication module. Application module is a SELV / Class 2 device.

### Operating Environment:

-5° to 50°C / 25° to 122°F ambient temperature  
0% to 90% RH non-condensing

### Storage and Transport Environment:

-25° to 70°C / -13° to 158°F ambient temperature  
0% to 90% RH non-condensing

### IP rating: IP22

### Connection to approved Communication module:

26 pin header connection.

### Compliance:

CE, C-Tick

Specifications and design subject to change without notice.

Not to be reproduced without permission. A detailed long description of the Antumbra installation is available from the website [philips.com/dynalite](http://philips.com/dynalite)