



# Museum of Islamic Art

– the art of light enhances inspired architecture

The Museum of Islamic Art in Doha, Qatar is a spectacular architectural achievement. This museum is one of the most distinguished buildings in the Middle East. Designed by world renowned architect, I. M. Pei, the museum features sleek minimalistic lines, accentuated by the geometric patterns and aesthetic detail found in the art and architecture of the Muslim world.

Philips Dynalite has created a sophisticated lighting solution that not only helps show off the stunning structural elements of the building, but also give the museum ultimate flexibility for gallery exhibitions.

**PHILIPS**  
dynalite 



## Client requirements

### Lighting features that adapt to any exhibition

Lighting configuration flexibility is paramount in museum/gallery applications.

The Museum of Islamic Art is dedicated to being the foremost Museum of Islamic art in the world. Thus it is important that it is possible to move lighting features without time-consuming rewiring and control system reconfiguring.

Gallery staff must be able to customise lighting schemes to individual pieces of artwork or zones or reconfigure entire areas as exhibitions change.

## The Philips Dynalite solution

### Innovation in track lighting control

Underpinning the gallery lighting scheme for this stunning building is an innovative state-of-the-art track-lighting control solution from Philips Dynalite, teamed up with Zumtobel.

Designed to optimise track-lighting installation, set-up and operation, the innovative system comprises a Philips Dynalite control card with in-built logic capabilities embedded into 1200 Zumtobel D60 track-lighting fixtures. Once networked, the control card/fixture combination has the ability to automatically identify track location and position to the supervisory control system the moment the fixture is positioned on the track, thereby providing installation and operational flexibility.

### Remote configurations and control

The Philips Dynalite solution means lighting fixtures can simply be 'clicked' into any of the museum's lighting tracks and be online within seconds.

Operators are alerted to the installation or repositioning of lighting fixtures via a small icon on their desktop PC or on the portable tablet PC on the museum floor. Once online, these fixtures can be configured, controlled and manoeuvred remotely, to suit the artwork on show without any prior set-up. The system is extremely simple to use.

### Streamlined WiFi functionality

Lighting control is further streamlined by the systems WiFi functionality. This allows museum staff the mobility and convenience of using a hand-held tablet PC. This means they can experience a viewer's perspective and are able to configure accordingly. Museum staff can walk around the museum, identify individual light fittings and make an adjustment on the spot.

“ Using wireless connectivity and a hand-held tablet PC, museum staff can get up close to the art work alongside viewers to experience and configure the lighting scheme. ”

## Products and technology used

### Creating powerful functionality

Each of the 1200 Zumtobel D60 track-lighting fixtures incorporate six stepper motors and three dimmable incandescent luminaires, which are controlled via the customised Philips Dyalite control cards in conjunction with leading- and trailing-edge dimming controllers. In addition, Philips Dyalite DMX512 transmitter interfaces and I-10V ballast controllers integrate control of decorative fibre-optic and cold-cathode lighting.

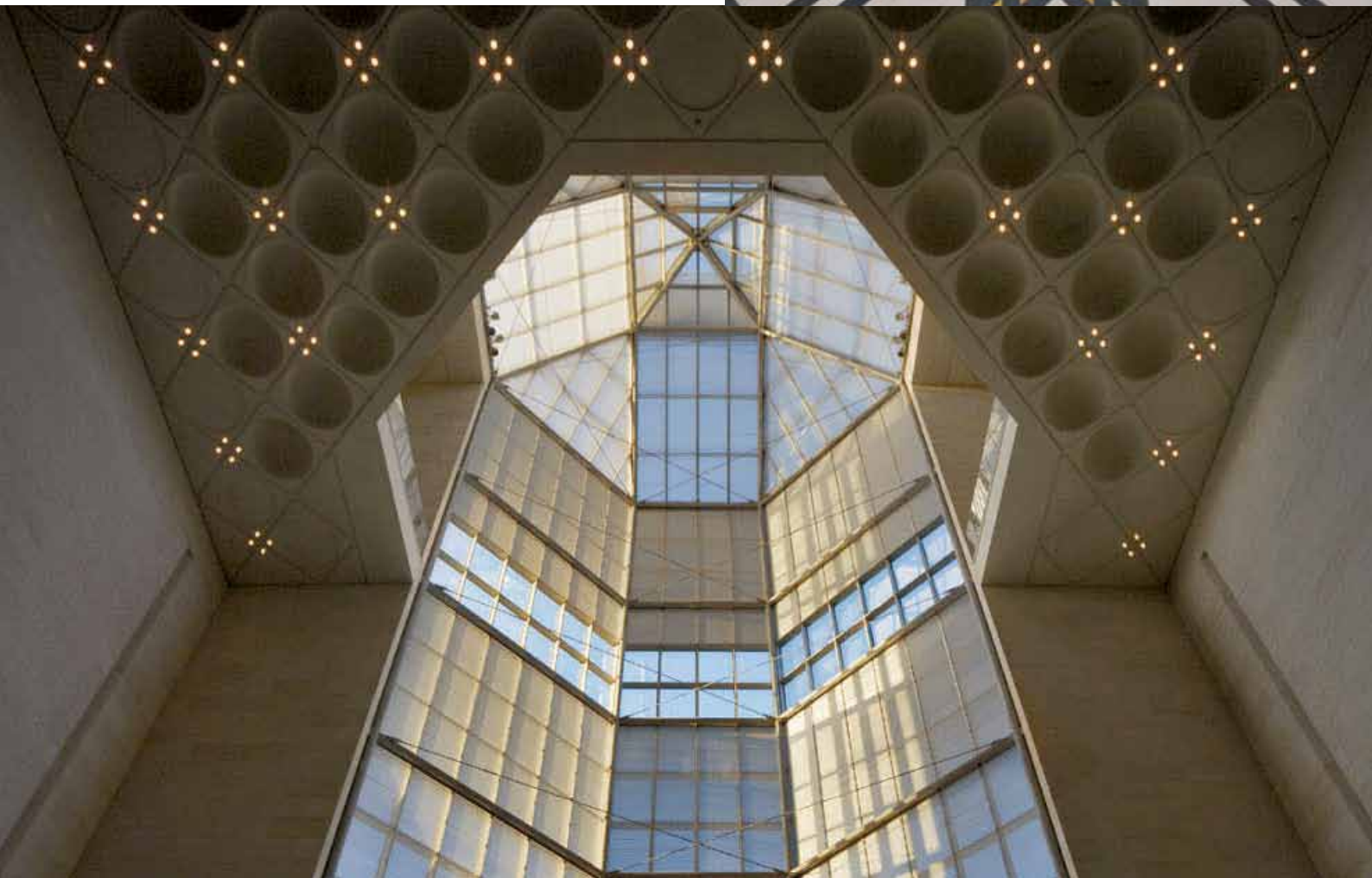
### Linked and software managed

All components are linked via Philips Dyalite's sophisticated peer-to-peer communications serial bus network, DyNet. The lighting control system is configured and managed using Philips Dyalite's DLight III MapView (EnvisionProject) site management software, via a control room PC or remotely via a hand-held tablet PC.

## Key client benefits

The Philips Dyalite solution delivers a state-of-the-art, flexible lighting control system that works to enhance the priceless exhibitions of Islamic artwork with a world-class architectural design.

The system has been designed to allow staff to configure lighting for exhibitions with speed and skill, maximising the museum visitor experience.



**Headquarters & All other countries/regions**

P: +61 (0) 2 8338 9899  
E: [dynalite.info@philips.com](mailto:dynalite.info@philips.com)  
W: [dynalite-online.com](http://dynalite-online.com)

**Australia, New Zealand**

SYDNEY, AUSTRALIA  
P: +61 (0) 2 8338 9899  
E: [dynalite.info@philips.com](mailto:dynalite.info@philips.com)  
W: [dynalite-online.com](http://dynalite-online.com)

**North Asia**

SHANGHAI, PR CHINA  
P: +86 21 2412 8035  
E: [dynalite.info@philips.com](mailto:dynalite.info@philips.com)  
W: [dynalite-online.com](http://dynalite-online.com)

**South Asia**

SINGAPORE, SINGAPORE  
P: +65 6882 3000  
E: [dynalite.info@philips.com](mailto:dynalite.info@philips.com)  
W: [dynalite-online.com](http://dynalite-online.com)

**India**

DELHI, INDIA  
P: +91 124 460 6333  
E: [dynalite.info@philips.com](mailto:dynalite.info@philips.com)  
W: [dynalite-online.com](http://dynalite-online.com)

**Europe (ex.UK)**

EINDHOVEN, THE NETHERLANDS  
E: [info.lightingcontrols@philips.com](mailto:info.lightingcontrols@philips.com)  
W: [dynalite-online.com](http://dynalite-online.com)

**United Kingdom**

GUILDFORD, UNITED KINGDOM  
P: +44 (0) 148 329 8950  
E: [lcuk.sales@philips.com](mailto:lcuk.sales@philips.com)  
W: [dynalite.eu](http://dynalite.eu)

**Middle East & North Africa**

DUBAI, UAE  
P: +971 4 214 6130  
E: [dynalite.info@philips.com](mailto:dynalite.info@philips.com)  
W: [dynalite.com.au](http://dynalite.com.au)

**United States**

DALLAS, TEXAS  
P: +1 800 526 2731  
E: [controls.support@philips.com](mailto:controls.support@philips.com)  
W: [lightolier.com](http://lightolier.com)

**Canada**

LACHINE, QUEBEC  
P: +1 514 636 0670  
E: [controls.support@philips.com](mailto:controls.support@philips.com)  
W: [canlyte.com](http://canlyte.com)



[asimpleswitch.com](http://asimpleswitch.com)

For more information, please contact

<b>Melbourne</b> 03 9701 2500	<b>Sydney</b> 02 9737 8988
<a href="mailto:info@lightmoves.com.au">info@lightmoves.com.au</a>	<a href="http://www.lightmoves.com.au">www.lightmoves.com.au</a>