

Antumbra

Next Generation User Interface for the powerful Dynalite Network

User Guide

Version 3.0

Supplied by:

lightmoves

Melbourne
03 9701 2500

info@lightmoves.com.au

Sydney
02 9737 8988

www.lightmoves.com.au

PHILIPS
dynalite 

Background

Philips Dynalite is a highly specialized company whose principal occupation is to provide 'cutting edge' solutions for lighting control. Our achievements have been recognized worldwide and Philips Dynalite is generally the system of choice for projects involving integration with third-party vendor's equipment and for large-scale applications.

Philips Dynalite's philosophy is to provide the best solution possible for each and every project. This is the key to our success. Our considerable investment in Research & Development ensures that we remain at the forefront of our industry. Our position as a world leader in lighting management systems for the future is sustained through our total commitment to innovation.

We are represented around the world by distributors and dealers who are handpicked for their ability to provide the highest possible level of service.

From a stock exchange in Shanghai, to a luxury resort in Dubai, a smart home in Sao Paulo to limestone caves in New Zealand, Philips Dynalite's innovative solutions deliver intelligent light.

Ongoing research and development has enabled Philips Dynalite to create secure automated systems that control tens of thousands of individual light fittings in high-rise office buildings from any location anywhere in the world. Our networks are engineered to deliver instant notification of power or system failure, and report via a LAN, internet, or through an SMS gateway to a mobile phone. This provides the assurance necessary in applications where continuous operation is vital, such as road tunnels, computer servers or cold storage units.

Philips Dynalite's modular product design philosophy also improves system flexibility. Through this approach, specific application requirements can be accommodated with greatly reduced lead times. As an industry leader Philips Dynalite is committed to creating superior lighting control and energy management systems, setting new benchmarks in performance and efficiency.

In receiving the International Association of Lighting Designers award for Most Innovative Product, the Philips Dynalite control system has been independently recognized as 'A user friendly and sensible modular approach, which takes it from sophisticated domestic settings to large architectural spaces'.

Contents

Product Overview	6
<i>Antumbra Button Panel Hardware</i>	<i>7</i>
Features of Antumbra Button Panel	9
Features of Antumbra Touch Panel	10
<i>Structure of Antumbra Button Panel</i>	<i>12</i>
<i>Product Architecture of Antumbra Button panel</i>	<i>13</i>
Application Module	13
<i>Structure of the Antumbra Touch Panel</i>	<i>14</i>
<i>Product Architecture of Antumbra Touch Panel</i>	<i>15</i>
<i>Communication Module</i>	<i>16</i>
Configuration of Antumbra Panels	17
Adding the Antumbra Panel to EP	17
<i>Device Properties of Antumbra Button Panel</i>	<i>18</i>
Panel Data	19
Temperature Sensor	19
<i>Device Properties of Antumbra Touch Panel</i>	<i>21</i>
Panel Data	21
Temperature Sensor	22
Buzzer	22
<i>Buttons</i>	<i>24</i>
General	24
Logical Address	25
General	25
<i>Function</i>	<i>26</i>
Sub functions	26
Indicator LED	33
<i>Proximity Sensor</i>	<i>35</i>
General	35
Logical Address	35
LightWash	36
Function	36
Installation recommendations for the Antumbra Panel	37
<i>Area Cascading</i>	<i>38</i>
<i>Tasks and Events</i>	<i>38</i>
<i>Comm Ports</i>	<i>38</i>
<i>Product Details</i>	<i>38</i>
Ordering the Antumbra panel series.	39
Application module	46
Application module base of Antumbra button in detail	48
Application Module base of Antumbra Touch in detail	49
Communication Module	50
Network termination	51
Antumbra Button	52

Panel Dimension.....	52
Layer view:.....	52
<i>Installing the Antumbra button panel</i>	<i>53</i>
<i>Antumbra Touch</i>	<i>58</i>
Panel Dimensions:.....	58
Layer View:	58
<i>Installing Antumbra Touch panels</i>	<i>59</i>
<hr/>	
Antumbra Error Search Tree	62

About this guide

Overview

This guide is designed to assist in the configuration and installation of Antumbra Panels.

A working knowledge of EnvisionProject and Dynalite commissioning processes is required to effectively use this document.

Disclaimer

These instructions have been prepared by Philips Dynalite and provide information on Philips Dynalite products for use by registered owners. Some information may become superseded through changes to the law and as a result of evolving technology and industry practices.

Any reference to non- Philips Dynalite products or web links does not constitute an endorsement of those products or services

Copyright

© 2013 Dynalite manufactured by WMGD Pty Ltd (ABN 33 097 246 921). All rights reserved. Not to be reproduced without permission. Dynalite, Dimtek, DLight, DyNet and associated logos are the registered trademarks of WMGD Pty Ltd.

Document Revision: B

Product Overview

Philips Dynalite launches Antumbra Panel Series that has the most unique features and has revolutionized the way a people interact with the user interface. Antumbra redefines any pre-conceptions of what a user interface keypad or panel can be and how a user can intuitively interact with it to control the lighting system.

Antumbra Panel series has been designed to suit both residential and commercial markets. The Antumbra Panel series consists of the following types of panels:

- Antumbra Button
- Antumbra Touch
- Antumbra Display

Each button on the Antumbra panel can be configured using the EnvisionProject commissioning software to perform a vast range of functions.

The contemporary design of the Antumbra panel incorporates multiple sensors that are used to perform advance functions like ambient light sensing and temperature sensing.

The Antumbra Button panel consists of three sensors.

Proximity sensor

The Proximity sensor utilizes capacitive field effect technology to detect motion when the user approaches the panel it activates a lightwash onto the wall around the panel welcoming the user towards the panel.

Ambient light sensor

The Ambient light sensor senses the ambient light condition around the panel and can be used to automatically adjust the LED and lightwash brightness.

Temperature sensor

The temperature sensor is used to determine the temperature of the room where the panel is mounted.

The Antumbra Panel series is one of the most flexible user interface solutions available in the market. The advanced flexibility is achieved by dividing the panel into two components namely DyNet Antumbra Communication Module and Antumbra Application Module. The different types of modules connect together to form the solution for the Antumbra Panel series.

Antumbra Button Panel Hardware

The Antumbra Button Panel has a RS485 DyNet serial port and is classified as a Class 2 Safety Extra Low Voltage device.

The Antumbra Button panel is available in White, Silver and Magnesium button finishes.

To complement these button finishes, the rim finishes for the buttons are available in White, Magnesium, Chrome and Aluminium providing a wide range of décor matching possibilities. It is available in both Europe (EU) and North American (NA) styles.

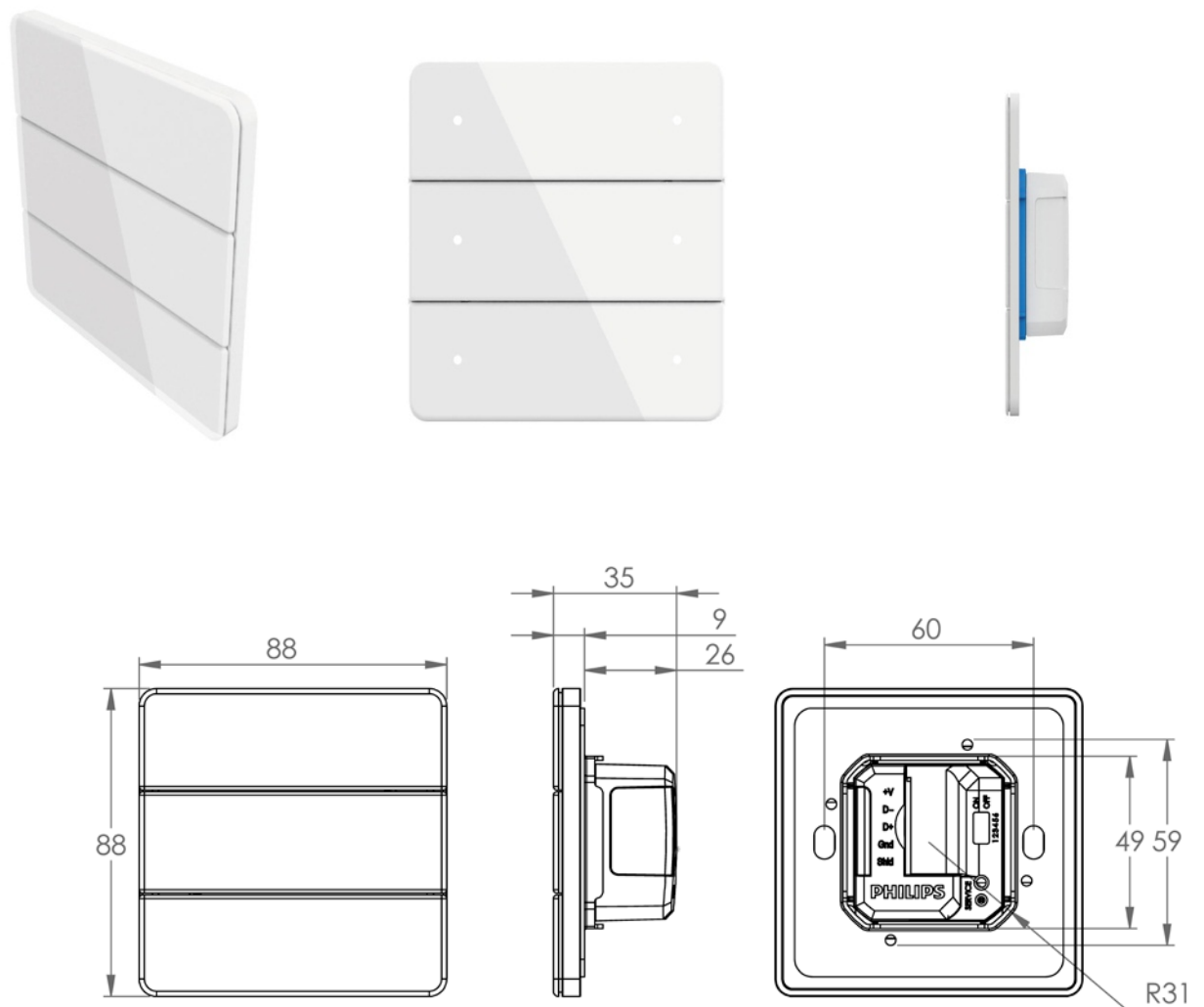


Figure 1 - Antumbra Button Panel EU

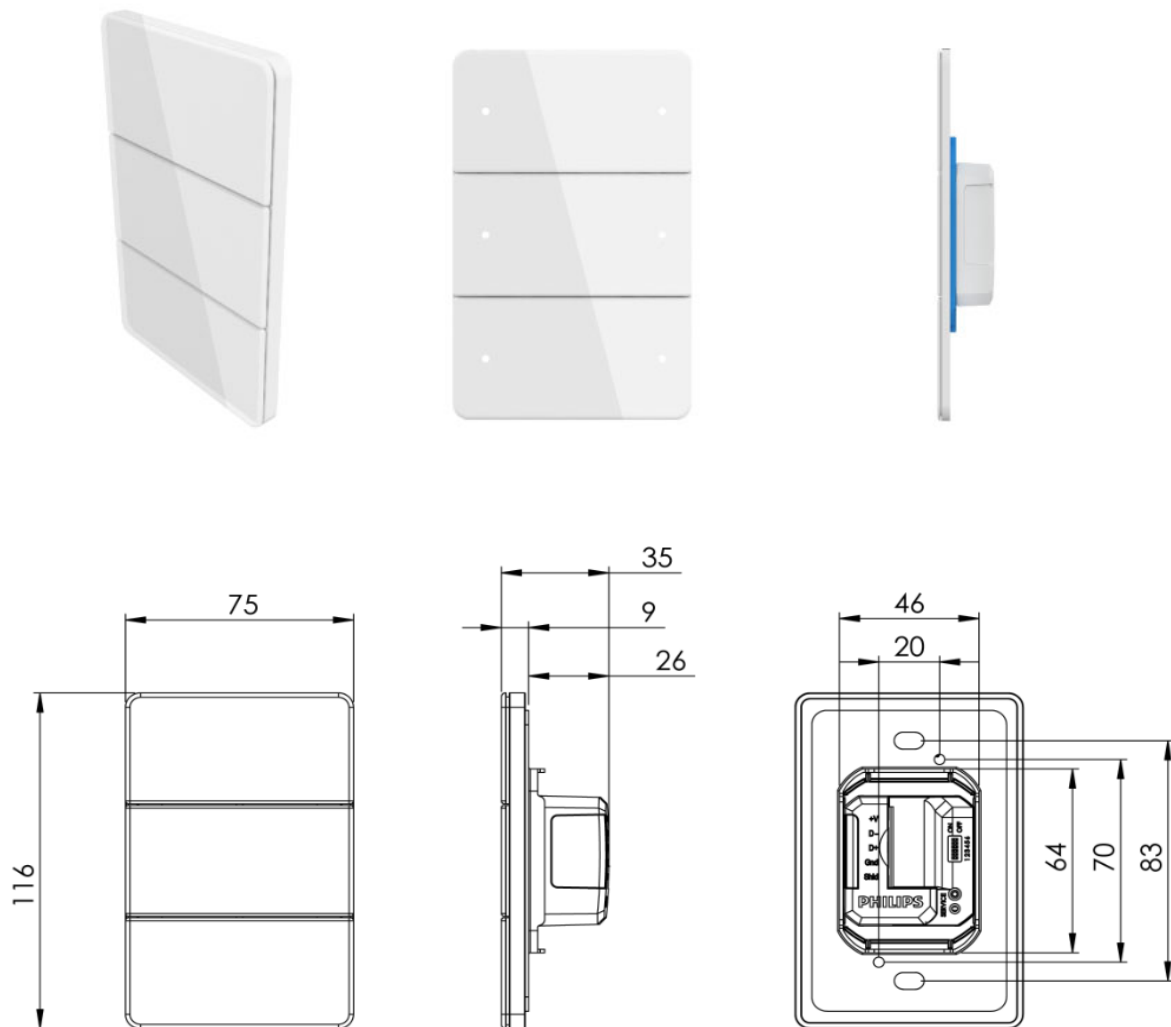


Figure 2 - Antumbra Button Panel NA

The Antumbra Panel has six configurable tactile buttons. They can be configured through EnvisionProject commissioning software to be used as panels having 1 to 6 buttons. The same hardware can be used as a one button panel and up to a six button panel. When buttons are not used, enable/disable catches can be used to remove the tactile feel on the buttons.

Customised labelling of icons and engraved text is available for each panel.

Features of Antumbra Button Panel

- Qualitative tactile big buttons for tactile feel
- Enable/disable catches
- Seamlessly hidden LED indicators for every button
- Proximity sensing up to 15cm
- Lightwash effect
- Temperature sensing
- Ambient light sensing through hidden window
- Scratch resistant up to 2H pencil hardness
- IP22 rated
- Mountable in portrait and landscape orientations
- Mountable in standard mounting wall boxes.



Figure 3 - Antumbra Button Panel

Features of Antumbra Touch Panel

- Sleek Glass front
- Light touch feel (Capacitive sensing)
- Audio feedback
- Seamlessly hidden LED indicators
- Proximity sensing up to 15cm
- Lightwash effect
- Temperature sensing
- Ambient light sensing
- IP22 rated
- Impact –resistant glass surface
- Mountable in portrait and landscape orientations
- Mountable in standard mounting wall boxes



Lightwash Effect

The Antumbra Panel responds to a person's presence with a welcoming ring of light around it to indicate the panel's location in low light environments. A built-in light level sensor ensures the lightwash effect is set to a comfortable level with respect to the current room lighting. The lightwash effect can be disabled through EnvisionProject software. The lightwash effect is displayed in the figure below:

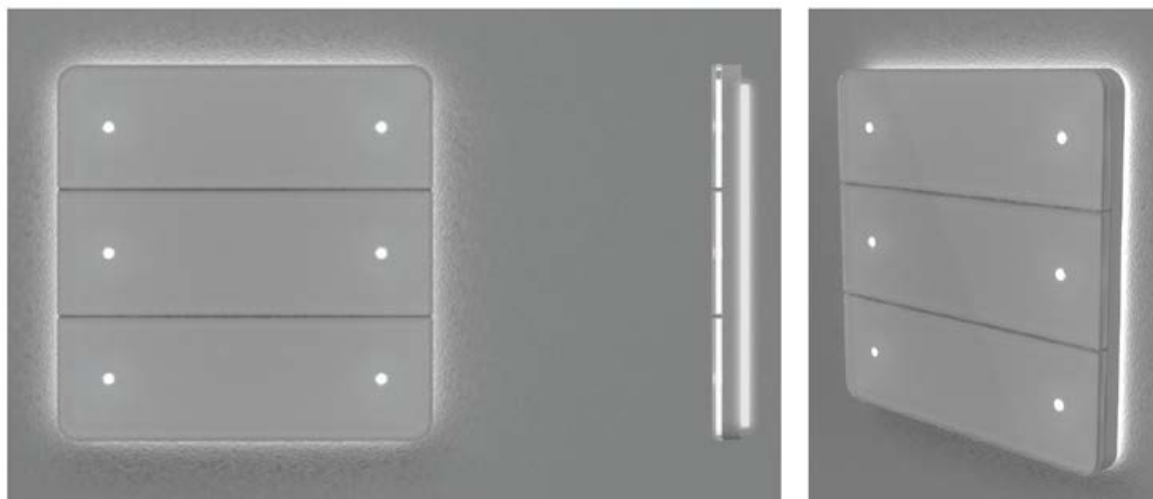


Figure 4 - Antumbra Panel with Light-Wash effect

LED Indicators

Programmable indicators appear on the Antumbra Panel as the user approaches the panel, showing the location of configured buttons on the panel. As the user moves away the LED indicators fade and become invisible on the panel. The brightness of these indicators can be configured using EnvisionProject.

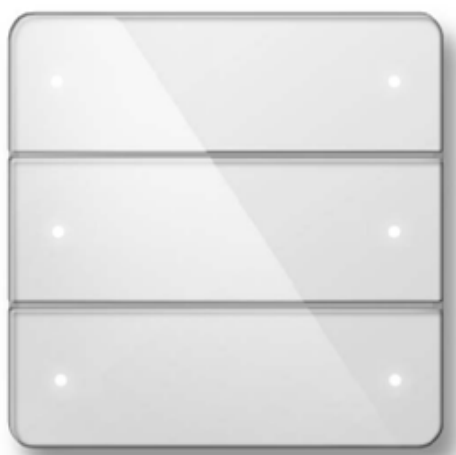


Figure 5 - LED Indicators on Antumbra Button Panel

Structure of Antumbra Button Panel

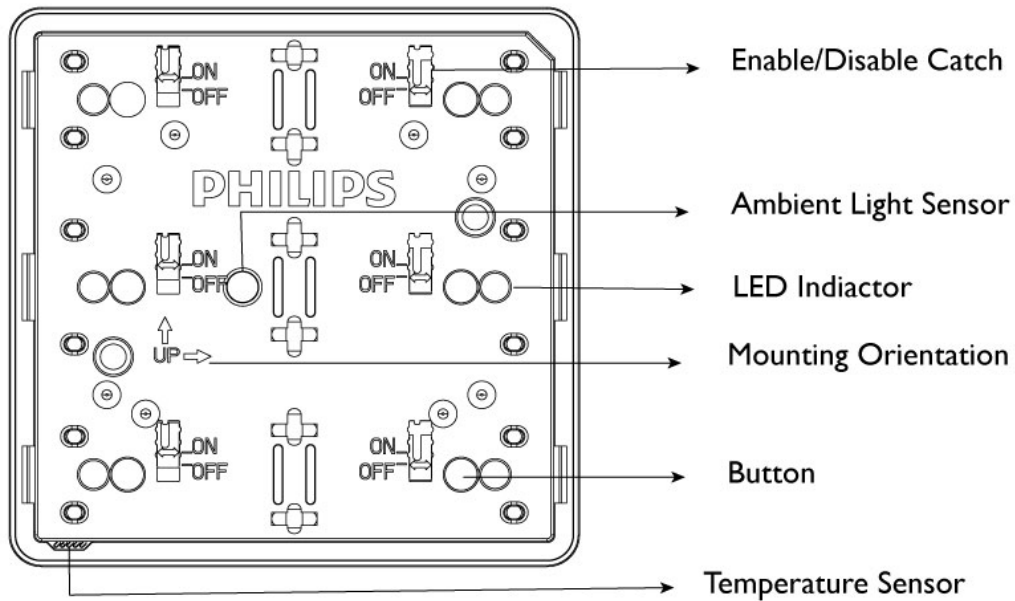


Figure 6 - Application Module Front View for Antumbra Button

The Antumbra Button Panel Application Module unit is made up of six configurable buttons, six LED indicators, six back light LEDs, a temperature sensor, a daylight sensor and a proximity sensor.

All the six buttons have an enable/disable catch that can be used to enable/disable the tactile feel of the buttons on the panel.

The panel can be mounted in both portrait and landscape orientations. Ensure the holes on the rim are located at the bottom of the panel for easy air flow that help in temperature sensing. Refer to the Application Module Front View image to mount the panel in the right orientation. The arrows indicate the side that has to be at the top when the panel is mounted.

Product Architecture of Antumbra Button panel

The Antumbra panel product is made up two components namely the Application Module and Communication Module. These two components come together to form the Antumbra panel.

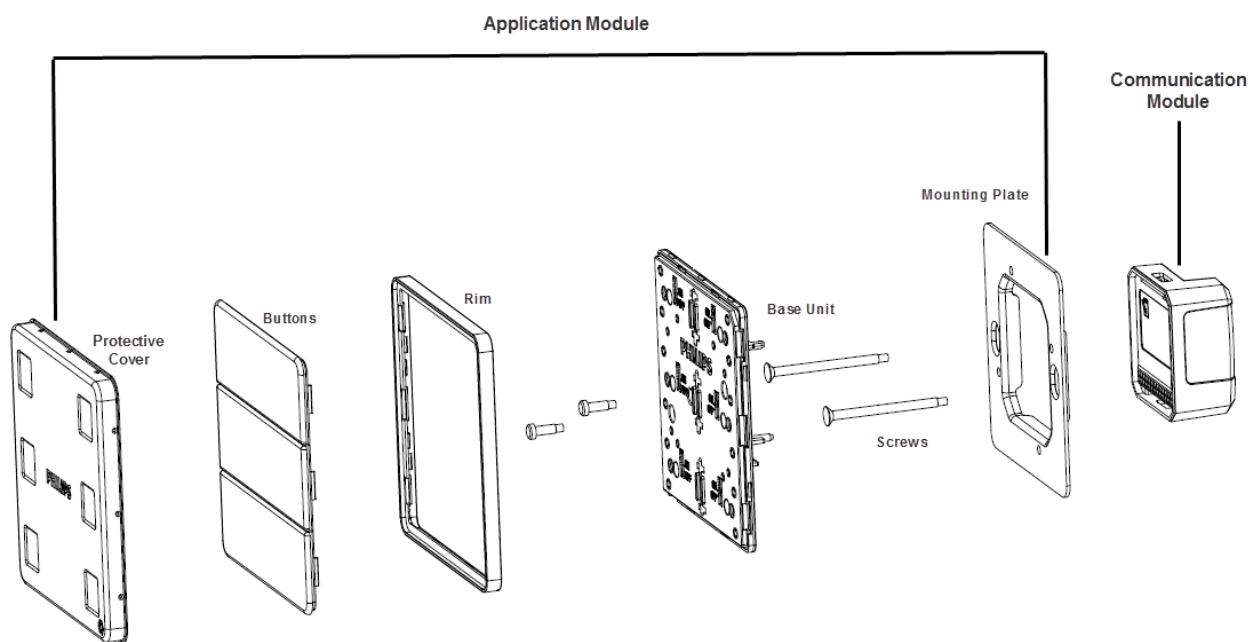


Figure 7 - Product Architecture of Antumbra Button

Application Module

The Application Module is made of protective cover, buttons, rim, base unit and the mounting plate. The buttons and rims in the Antumbra Button panel come in different colours and finishes. The button is available in White, Silver and Magnesium and the rim is available in White, Magnesium, Chrome and Aluminium.

The rim has built-in ventilation for fast acting response from the temperature sensor.

The Base unit contains all the sensor devices and the LEDs. It includes the proximity sensor, the day light sensor and the temperature sensor. The LEDs are used to provide backlight to the configured buttons on the panel. This unit also produces the light wash effect around the panel. All the parts of the Antumbra Button panel plug into the application unit.

Note: To remove the buttons from the panel, lift the button sides on the left side and the right side of the panel before lifting the button at the centre.

Structure of the Antumbra Touch Panel

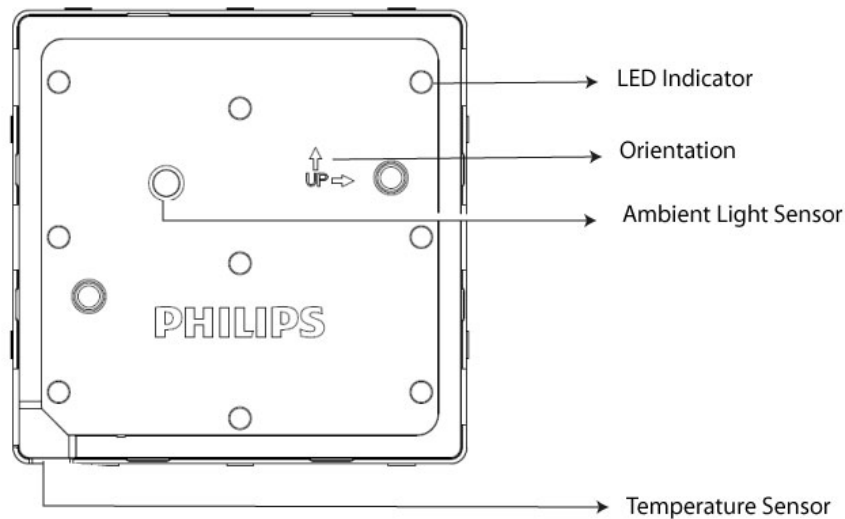


Figure 8 - Application Module Front View for Antumbra Touch

The Antumbra Touch Panel Application Module unit is made up of six configurable touch points, six LED indicators, six back light LEDs, a temperature sensor, a daylight sensor and a proximity sensor.

Note: The middle three LEDs on the panel are not available for selection.

The panel can be mounted in both portrait and landscape orientations. Ensure the holes on the rim are located at the bottom of the panel for easy air flow that help in temperature sensing. The arrows indicate the side that has to be at the top when the panel is mounted.

Product Architecture of Antumbra Touch Panel

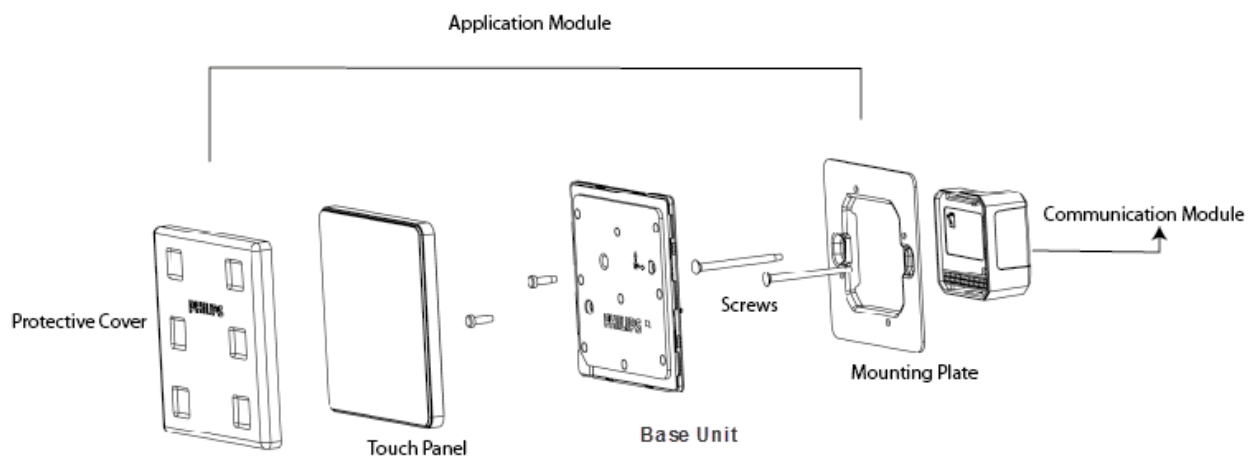


Figure 9 - Product architecture of Antumbra Touch Panel

The Antumbra Touch panel product is made up two components namely the Application Module and Communication Module. These two components come together to form the Antumbra Touch panel.

The Application Module is made of protective cover, touch panel, base unit and the mounting plate. The touch surface and rims in the Antumbra touch panel come together as a single component. The Glass Fascia Assembly is available in White and Black colour. The rim is available in White, Black, Chrome and Aluminium finish.

The rim has built-in ventilation for fast acting response from the temperature sensor.

The Application unit contains all the sensor devices and the LEDs. It includes the proximity sensor, the day light sensor and the temperature sensor. The LEDs are used to provide backlight to the configured buttons on the panel. This unit also produces the light wash effect around the panel. All the parts of the Antumbra touch panel plug into the application unit.

The communication module is common across all the Antumbra panels.

Communication Module

The DyNet communication module is common across all the Antumbra Panel series. It contains all the logical and network functions that are used to communicate in a DyNet environment.

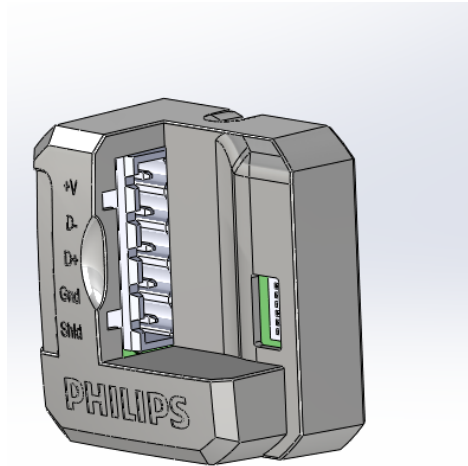


Figure 10 - DyNet Antumbra Comms Module

The communications module contains all the settings of the panel and manages the communication to the DyNet network.

The communication module can be pre-programmed using the EnvisionProject commissioning software without the application module. For example, for hotel room projects where the number of different panel configurations are known, the same software settings can be programmed on all the Comms Modules and the installer while installation has to only configure it to the required area. It consists of 6 DIP switches that can be used to make large scale project commissioning simple.

Also the front of the Comms Module, has a small white space that can be used by the installer to mark notes on the module.

The service switch can be used to test the network. A long press resets the Comms Module and a short press sends a sign-on message on to the DyNet network.

For more information regarding communication module termination and operation can be found under the topic Network Termination.

Configuration of Antumbra Panels

The Antumbra Button Panel is a programmable user interface with 6 configurable inputs.

The following configuration pages are available in EnvisionProject:

- Device Properties
- Buttons
- Proximity Sensor
- Light Control
- Area Cascading
- Tasks and Events
- Comm Ports
- Product Details

Adding the Antumbra Panel to EP

Add the Antumbra Button Panel to your project using one of the standard two methods:

 Load the device from network

 Insert the device from list

The two types of Antumbra Button Panels available in EP are:

PABPA – Australian style

PABPE – European style

The two types of Antumbra Touch Panels available in EP are:

PATPA6 – Australian style

PATPE6 – European style

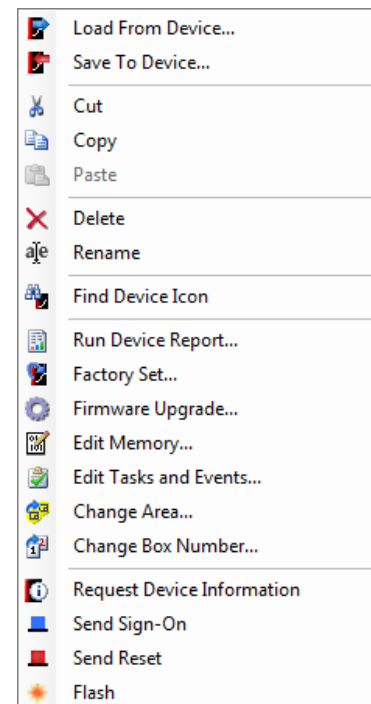


Figure 11 - Context Menu

Once the Antumbra panel has been added to the project, the product is displayed in the Network View tree. If the Antumbra panel has been added in the Physical view, it appears in both Physical and Network views.

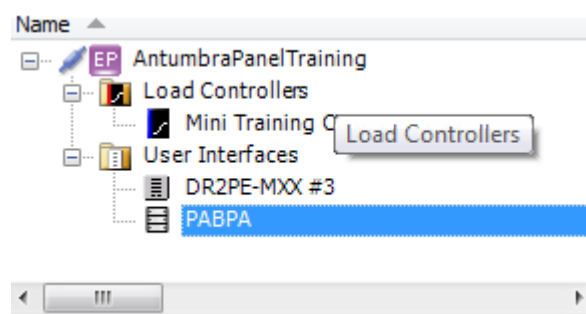


Figure 12 - Network View

When the Antumbra Panel is selected, you can access the common device functions from the Network/Physical tool bar menu or by right-clicking the name of the panel to open the Context menu.

Device Properties of Antumbra Button Panel

The Device Properties Page displays basic and advanced information about the Antumbra Button Panel. The following buttons are available on the toolbar.

Displayed fields can be sorted in one of two ways by using the following buttons:

 Categorized

 Alphabetically

Initially only the basic fields are shown. To reveal all fields, click the  Advanced button.

The list can be filtered by entering a property name in the  box.

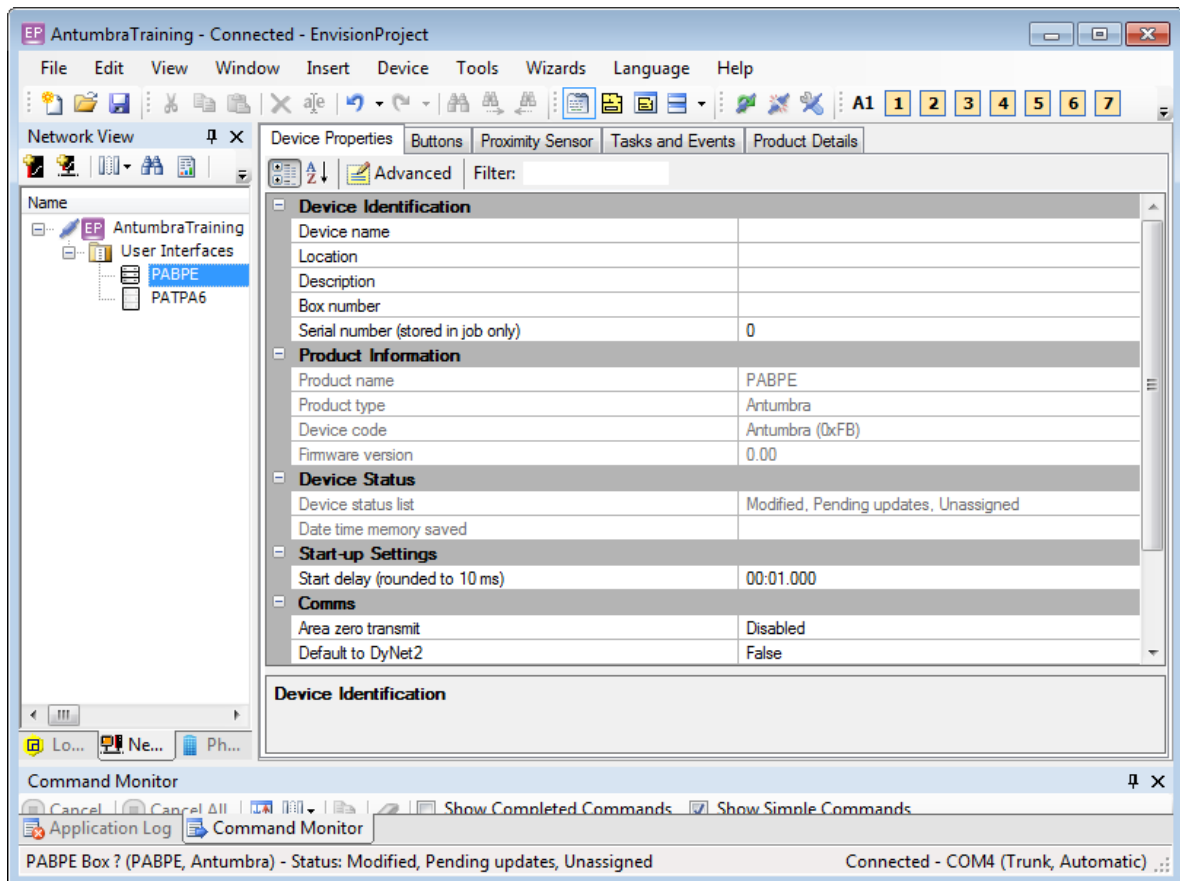


Figure 13 Device Properties Page

Panel Data

The Antumbra Panel specific settings are located in the Panel data section:

Native Logical Area

Logical Area where the panel is located

Native BLA

The Base Link Area number where the panel is located

Logical Channel

The logical channel the panel is assigned to.

Native Join

The static join of the panel

Temperature Sensor

Control

Enables temperature Sensor

Logical Area

Logical Area where the panel is located

Broadcast Temperature

If enabled, the panel broadcasts temperature to the network periodically.

Measured temperature offset

Co-efficient used to decide the current temperature from the measured temperature. It is an offset that is applied for the measured temperature. The broadcasted temperature will contain the offset along with the measured temperature.

Min trigger time

The time the panel has to wait between each broadcasting even if temperature change is greater than delta value. This is to prevent frequent broadcast of temperature over the network.

Max trigger time

The time the panel takes to broadcasts the current temperature even if the temperature change is less the defined delta value.

Delta value (°C)

The offset defined for variation in temperature. If the measured temperature is greater than the delta value the temperature is broadcasted. The temperature is broadcasted when the minimum trigger is expired.

BLA

The Base Link Area number where the panel is located

Logical Channel

The logical channel that panel is assigned to.

Join

The static join of the panel.

Device Properties of Antumbra Touch Panel

The Device Properties Page displays basic and advanced information about the Antumbra Button Panel.

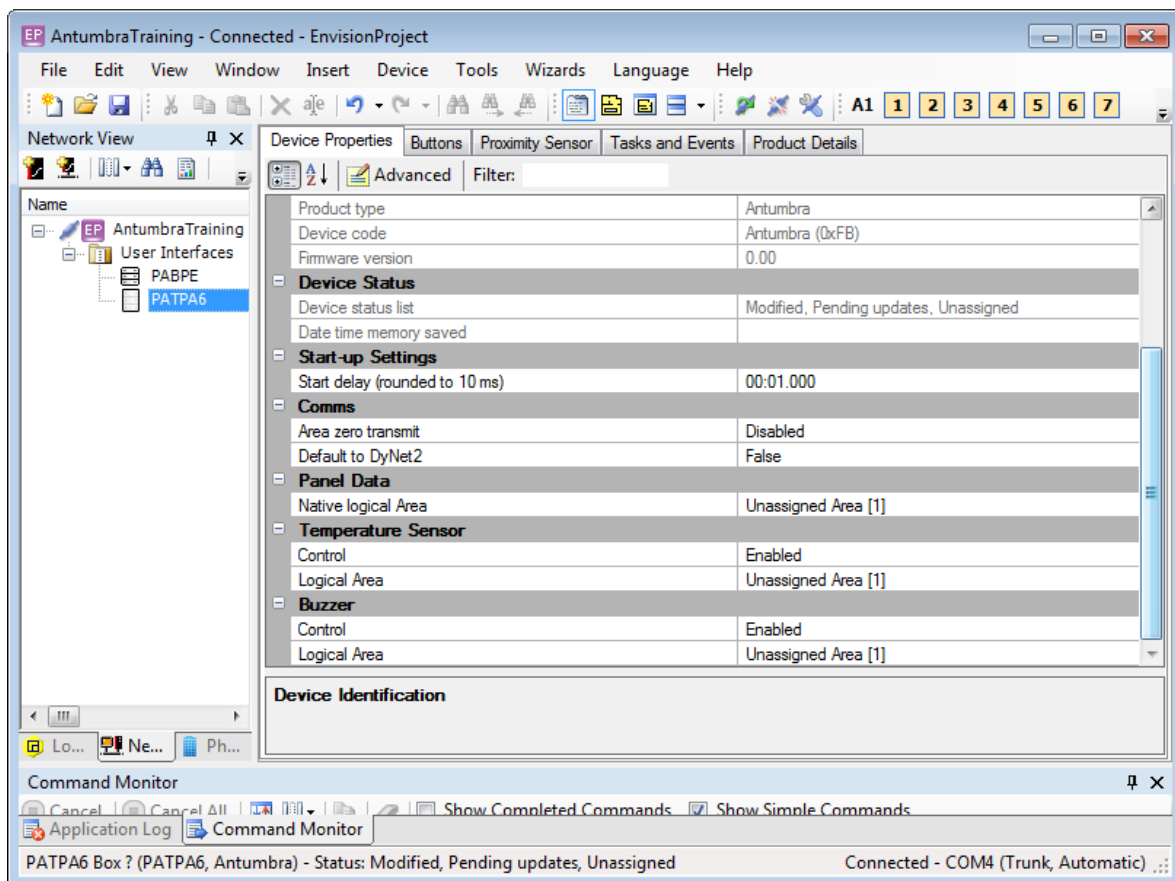


Figure 14 - Device Properties of Antumbra Touch Panel

Panel Data

The Antumbra Panel specific settings are located in the Panel data section:

Native Logical Area

Logical Area where the panel is located

Native BLA

The Base Link Area number where the panel is located

Logical Channel

The logical channel that panel is assigned to.

Native Join

The static join of the panel.

Temperature Sensor

Control

Enables the temperature Sensor

Logical Area

Logical Area where the panel is located

Broadcast Temperature

If enabled, the panel broadcasts temperature to the network periodically.

Measured temperature offset

Co-efficient used to decide the current temperature from the measured temperature. It is an offset that is applied for the measured temperature. The broadcasted temperature will contain the offset along with the measured temperature. This value is set to -0.5 for Antumbra Touch panels.

Min trigger time

The time the panel has to wait between each broadcasting even if temperature change is greater than delta value. This is to prevent frequent broadcast of temperature over the network.

Max trigger time

The time the panel takes to broadcasts the current temperature even if the temperature change is less the defined delta value.

Delta value (°C)

The offset defined for variation in temperature. If the measured temperature is greater than the delta value the temperature is broadcasted.

BLA

The Base Link Area number where the panel is located

Logical Channel

The logical channel that panel is assigned to

Join

The static join of the panel.

Buzzer

Control

Enables/Disabled. When enabled the buzzer is activated.

Logical Area

Logical Area where the panel is located

BLA

The Base Link Area number where the panel is located

Logical Channel

The logical channel that panel is assigned to

Join

The static join of the panel.

Note: Buzzer feature is available only for Antumbra Touch Panels.

Buttons

The Buttons Page displays the Button Editor. Selecting a button enables you to specify the button functions and the type of press/release action that will trigger each function

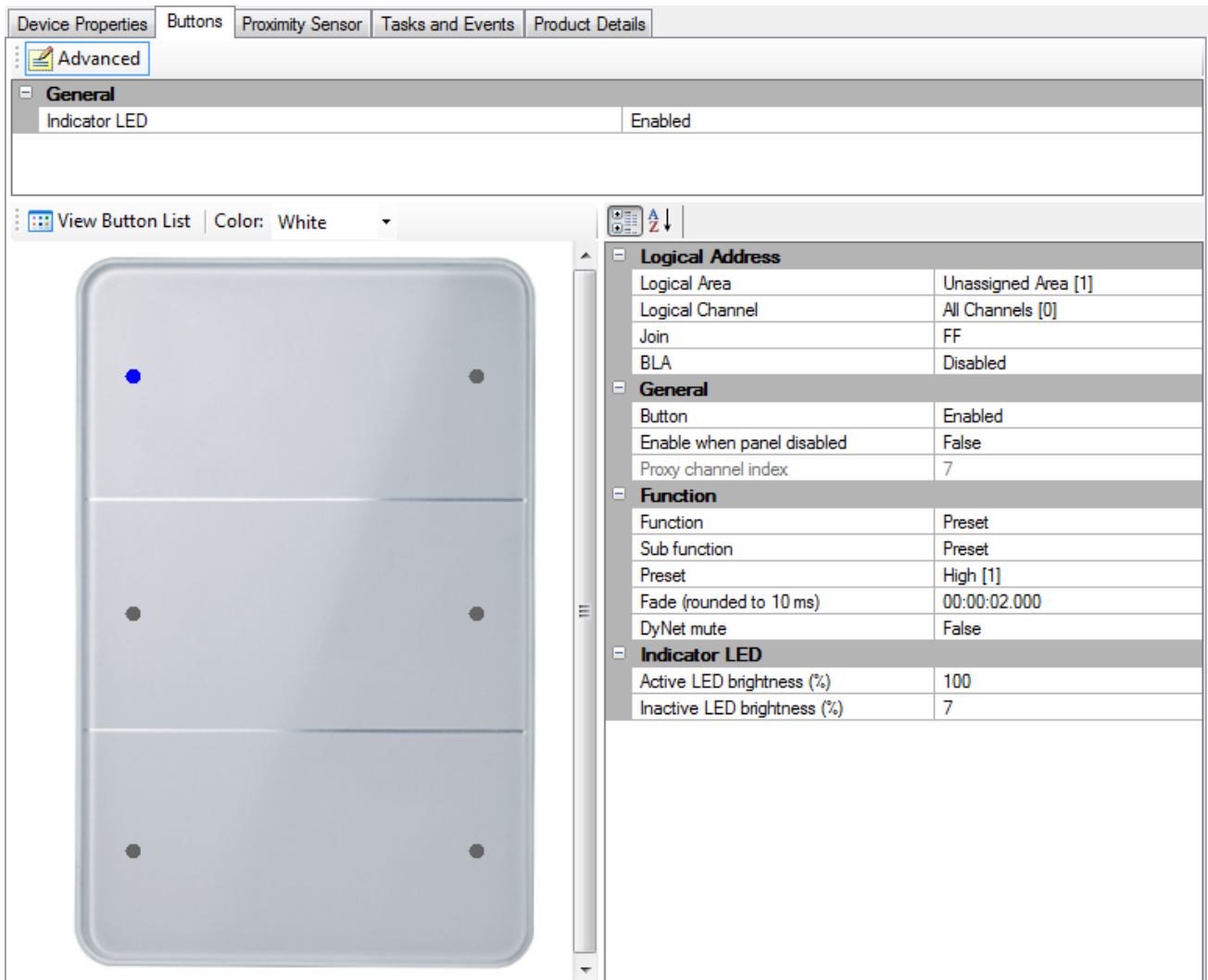


Figure 15 - Buttons page

General

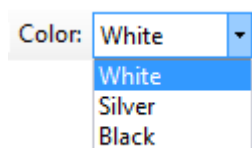
The properties under the General category are global properties that are applicable for all the six input button LED indicator.

Indicator LED

Enable/Disable the all the indicator LEDs.

Select the color of the Panel you are configuring through the Color drop down. Selecting the color of the panel automatically calibrates the sensors in the panel.

The colors available for Antumbra Button panel are White, Black



and Silver.

The colors available for Antumbra Touch panel are White and Black.

Logical Address

Logical Area

The Logical Area where the panel is located.

Logical Channel

The logical channel that panel is assigned to

Join

Static join of the panel.

BLA

Base Link Area number where the panel is located.

General

Button

Enable/Disable the button on the panel.

Enable when panel disabled

True/False. Function is still available in panic mode. The button is enabled when panel is disabled.

Function

You can select the input function for an Antumbra Button Panel from the following choices:

 Advanced

 Channel Level

 Custom

 One Touch

 Preset

 Ramp

 Task

 No function

Sub functions

Advanced

 **Sign-on**

Checks the functionality of the button by sending a DyNet message on to the network.

Event Control

Control type

Enable/Disable/Triggers the event

Device Code

Used to identify the device

Box number

Used to identify the device

Event number

Number of the event on the device that will be triggered.

 **Panic**

Panic

True/False. True sets the panel to panic mode.

Fade time

The time taken by the panel to get into panic mode.

Panel enable/Disable

Enable Panel

True/False. Enables or disables panel

DyNet mute

Stop Dynet messages being created by this function

Set Join Level

Set Join Level can be used to set a dynamic join level of the specified area.

Join Level

Join level has a range between 0-255 and is used to set a dynamic join level

DyNet I Logical messages

Opcode

Opcode of the logical message

Data1

First data byte

Data2

Second Data byte

Data3

Third data byte

DyNet Physical messages

Opcode

Opcode of the physical message

Data1

First data byte

Data2

Second Data byte

Data3

Third data byte

Channel Level

Level

Sets the percentage level of light on the channel

Fade

The time taken to reach the defined channel level

Off preset

Defines the off preset number for the area. It is used by LED tracking

DyNet mute

Stop Dynet messages being created by this function.

Custom

Allows you to select from any of the options in the Action Chain Editor

Standard function name

Enable/Disable Base Link Area

Press actions

Opens the Action Chain Editor

Release actions

Opens the Action Chain Editor

Extended press actions

Opens the Action Chain Editor

Extended release actions

Opens the Action Chain Editor

One Touch

One touch ramp only

On Preset

Defines the preset in ON state

Off Preset

Defines the preset in OFF state

Fade

Time taken to reach the preset level

Ramp rate

Time taken to ramp up to the required level

Min Level

Minimum light level that remains on the channel while ramping.

DyNet mute

Stop Dynet messages being created by this function.

One touch ramp with program

On Preset

Defines the preset in ON state

Off Preset

Defines the off preset number for the area

Fade

Time taken to reach the preset level

Ramp rate

Time taken to ramp up to the required level

Min level

Minimum light level that remains on the channel while ramping

DyNet mute

Stop Dynet messages being created by this function

Toggle Preset

On Preset

Defines the preset in ON state

Off Preset

Defines the preset in OFF state

Fade

Time taken to reach the preset level

Preset

Preset

Preset

Set the preset in ON state

Fade

Time taken to reach the ON state

DyNet mute

Stop Dynet messages being created by this function

Off Preset

Defines the off preset number for the area. It is used by LED tracking.

Reset Preset

Fade

Time taken to reset the current preset

DyNet mute

Stop Dynet messages being created by this function

Preset Offset

Preset Offset

Moves the preset down to a number defined in the offset

DyNet mute

Stop Dynet messages being created by this function

Preset With Program

Preset

Set the preset in ON state

Fade

Time taken to reach the current preset

DyNet mute

Stop Dynet messages being created by this function

Ramp

Ramp up

Fade

Time taken to ramp up.

DyNet mute

Stop Dynet messages being created by this function

Ramp down

Min Level

Minimum level of light that remains when ramping down

Fade

Time taken to ramp down

DyNet mute

Stop Dynet messages being created by this function

Task

Task Local

Task local is a task that is executed on the local panel.

Control type

Controls the state of the task. The type of control can be a Start task, Pause task or Break task.

Task number

Defines the task number

Task Control

Task control executes a remote task on the network

Control type

Controls the state of the given task. The type of control can be a Start task, Pause task or Break task.

Device code

Code to identify the device on which the remote task is executed.

Box number

Number to identify the device on which the remote task is executed.

Task number

Defines the task number

No Function

When the button switch is not used

Indicator LED

This section is used to set the functionality of the indicator LED's in the Antumbra panel.. For the rest of the functions the functionality of the indicator LED is automatically set by Envision Project commissioning software.

LED

Enable/Disable. Defines indicator LED status for the selected button.

Follow panel enable logic

Defines LED follow behavior based on the panel enable/disable status.

Follow panic logic

Defines LED follow behavior based on panic/unpanic mode

Follow channel level logic

Defines LED follow behavior based on current channel level.

Follow preset logic

Defines LED follow behavior based on the current preset.

LED fade time

Defines fade time for LED.

Active LED brightness

Defines the brightness percentage level of the LED when the button is in active state

Inactive LED brightness

This is to define indicator LED brightness level when button is in inactive state.

Channel level threshold

Used by channel level logic

Min preset

Together with Maximum preset, min preset is used by follow preset logic

Max preset

Together with Minimum preset, max preset is used by follow preset logic.

Logical Area

The logical area where the panel is located

Logical Channel

The logical channel that panel is assigned to

Join

The static join of the panel

BLA

The base link area number where the panel is located

Off preset

Defines the off preset number for the area. It is used by LED tracking.

Proximity Sensor

The proximity sensor is used to detect a user approaching the Antumbra Panel. As the user is detected, the proximity sensor lights the back of the panel to produce a lightwash effect that welcomes the user to interact with the device. Settings for the proximity sensor are located in the Proximity Sensor page as shown below:

Device Properties		Buttons	Proximity Sensor	Tasks and Events	Product Details
		Advanced			
		General			
		Control			
		Enabled			
		Timeout			
		00:00:05			
		Max proximity time			
		00:45:00			
		Logical Address			
		Proxy channel index			
		1			
		Logical Area			
		Unassigned Area [1]			
		Logical Channel			
		All Channels [0]			
		Join			
		FF			
		BLA			
		Disabled			
		Lightwash			
		Lightwash			
		Enabled			
		Lightwash brightness level (%)			
		100			
		Lightwash proxy channel index			
		2			
		Lightwash logical Area			
		Unassigned Area [1]			
		Lightwash logical Channel			
		All Channels [0]			
		Lightwash Join			
		FF			
		Lightwash BLA			
		Disabled			
		Function			
		Target detected actions			
		Proximity Detected - Light threshold (lux): 13, Lightwash level in low light (...)			
		Target not detected actions			
		DyNet1 physical smart send (Mute); DyNet1 logical smart send (Mute); Dy...			

Figure 16 - Proximity Sensor tab

Properties for the proximity sensor are listed below:

General

Control

Enable/Disable. Sets the proximity sensor to active mode

Timeout

Time delay between the target not detected and target not detected action is executed. The minimum value of timeout in proximity sensor is set to 5 seconds.

Max proximity time

Maximum time that proximity sensor can be in target detected status.

Logical Address

Logical Area

Logical Area where the panel is located.

Logical Channel

The logical channel that panel is assigned to

Join

Static join of the panel

BLA

Disabled or the base link area where the panel is located.

LightWash

Lightwash

Enable/Disable lightwash.

Lightwash brightness level

Light level of the lightwash

Lightwash logical area

Logical Area where the panel is located

Lightwash Logical channel

The logical channel that panel is assigned to

Lightwash Join

Static join of the panel

Lightwash BLA

Disabled or base link area where the panel is located

Function

Target detected actions

Opens the Action Chain Editor for Proximity Sensor Target detected actions.

Target not detected actions

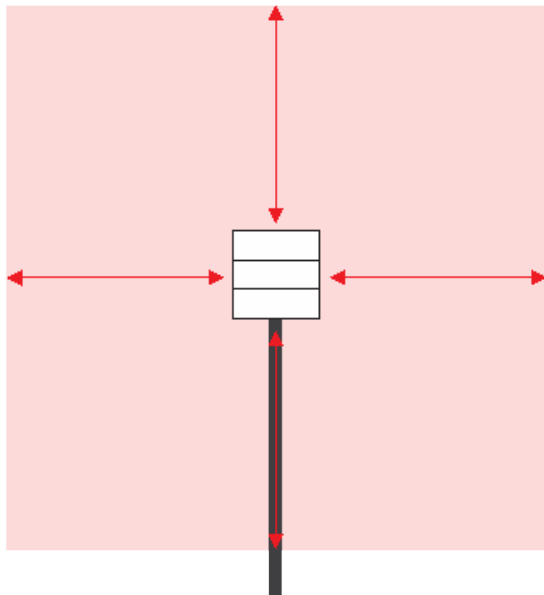
Opens the Action Chain Editor for Proximity Sensor Target not detected actions.

Installation recommendations for the Antumbra Panel

False triggering of the Proximity Sensor can be prevented by ensuring the following points are considered during installation:

- Surrounding cables are at a minimum distance of 25-30cm away from the panel.
- The first 30cm of the cable connected to the panel is fixed. The cable should not move.
- The preferable cable exit after connection to the terminal block is towards the bottom of the panel as it does not have the proximity sensing pad
- Avoid installing the panel closer than 0.3m from any metal object and other control panels of the same or different type as it may affect the proximity sensing range and cause false triggering

Panel should have 25-30cm clearance from any nearby cables (Mains & Signal) and metal objects



The first 30cm of the cable should be fixed and if possible bent and exiting towards the bottom of the panel as shown above

Note: Do not install panels near windows, sources of heat and air-condition ventilation outlets, also do not expose them to direct sunlight as all these factors may affect temperature sensing performance.

Area Cascading

Area cascading can be configured from the Area Cascading page in the Logical View or with the area cascading wizard.

Tasks and Events

Tasks and Events can be written on the Task Editor. Refer the EnvisionProject Training Guide for more information

Comm Ports

The Antumbra Button Panel has one standard DyNet port, For more information refer to the Comm Ports section

Product Details

The Product Details page displays the name, short description and a snapshot of the physical product.

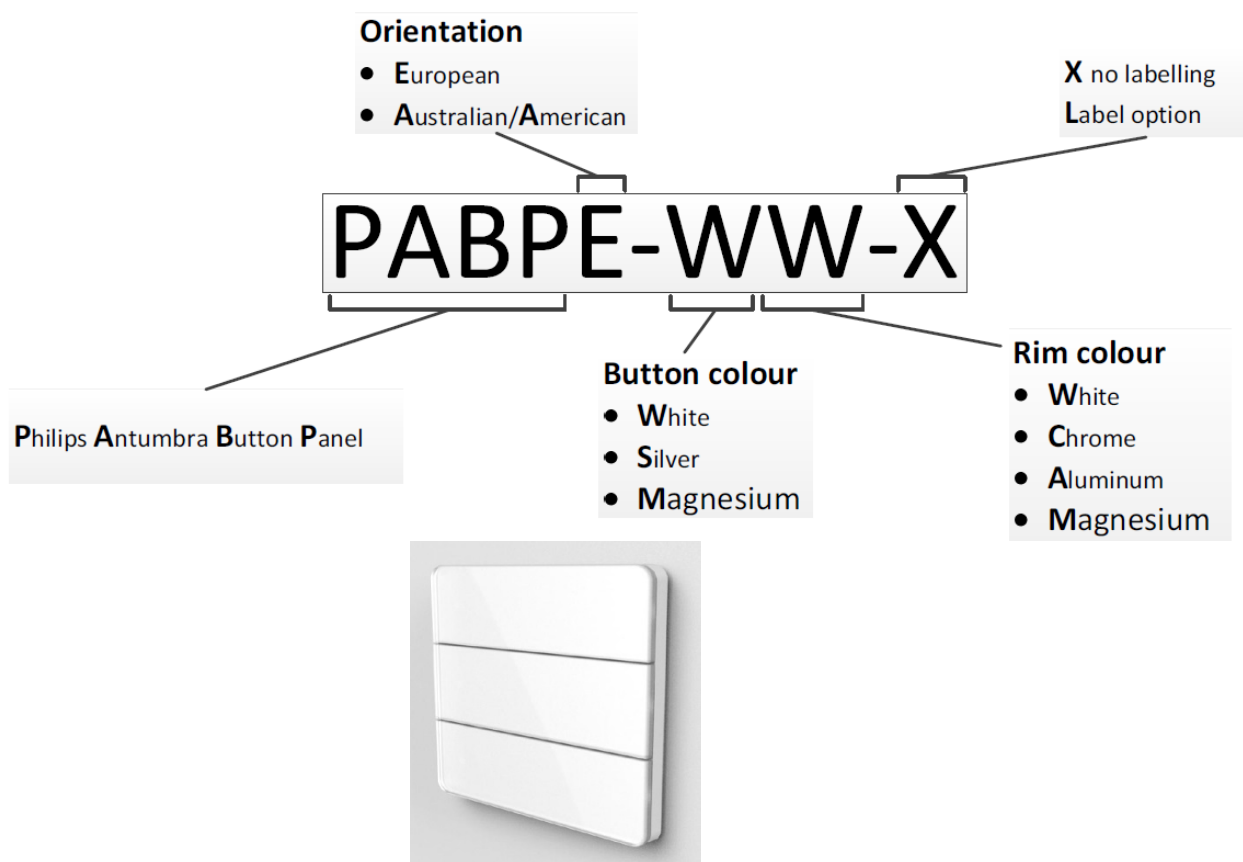
Ordering the Antumbra panel series.

The following text will take an installer through a step by step process of installing an Antumbra panel to ensure the best result. The panel must be mounted on a standard European wall box with screw locations and requires a wall box depth of at least 33mm

The Full Antumbra panel is split into two parts, the Application module and the Communication module. These two units are ordered separately. Both of these units are required for a complete installation.

The Application module is available in three different button finishes and four different rim finishes. Antumbra panels are also available with an option for button labelling, to detail button functionality. The different finish types and the option of button labelling are detailed in the full panel part name. How the part code is constructed with the different options can be seen below.

This part number describes a **European Antumbra button panel** with **white** buttons, **white** rim and no button labelling. An example of this panel is shown below.



The following table shows various part codes available for **Antumbra Button Panel**

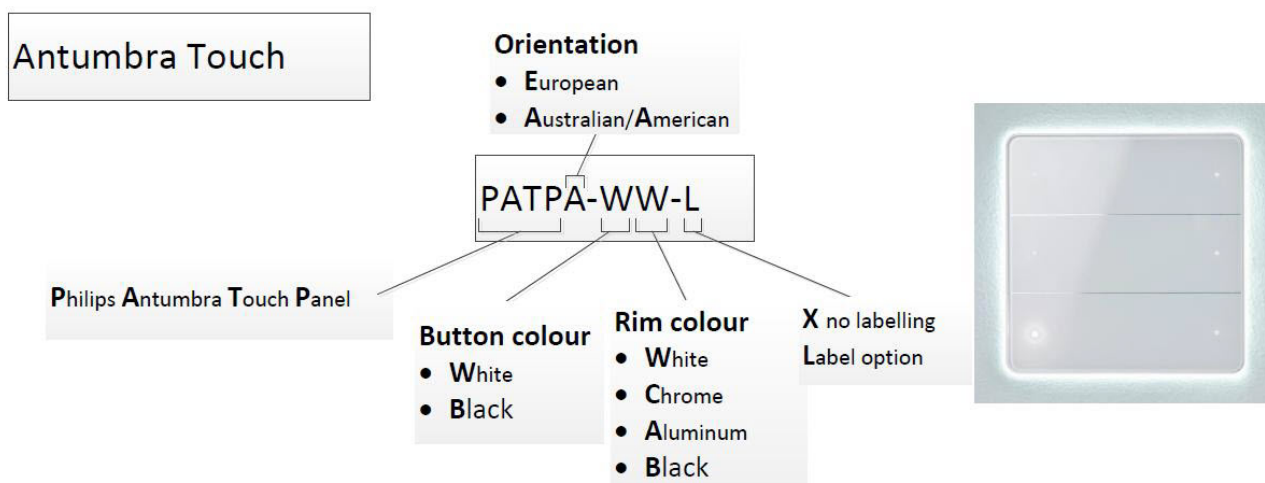
Button Finishes	Profile	Rim Finishes	Custom Label	Part number code
White	E	White	yes	PABPE-WW-L
White	A	White	yes	PABPA-WW-L
White	E	White	no	PABPE-WW-X
White	A	White	no	PABPA-WW-X
White	E	Aluminum	yes	PABPE-WA-L
White	A	Aluminum	yes	PABPA-WA-L
White	E	Aluminum	no	PABPE-WA-X
White	A	Aluminum	no	PABPA-WA-X
White	E	Chrome	yes	PABPE-WC-L
White	A	Chrome	yes	PABPA-WC-L
White	E	Chrome	no	PABPE-WC-X
White	A	Chrome	no	PABPA-WC-X
White	E	Magnesium	yes	PABPE-WM-L
White	A	Magnesium	yes	PABPA-WM-L
White	E	Magnesium	no	PABPE-WM-X
White	A	Magnesium	no	PABPA-WM-X
Silver	E	White	yes	PABPE-SW-L
Silver	A	White	yes	PABPA-SW-L
Silver	E	White	no	PABPE-SW-X
Silver	A	White	no	PABPA-SW-X
Silver	E	Aluminum	yes	PABPE-SA-L
Silver	A	Aluminum	yes	PABPA-SA-L
Silver	E	Aluminum	no	PABPE-SA-X
Silver	A	Aluminum	no	PABPA-SA-X
Silver	E	Chrome	yes	PABPE-SC-L
Silver	A	Chrome	yes	PABPA-SC-L
Silver	E	Chrome	no	PABPE-SC-X
Silver	A	Chrome	no	PABPA-SC-X
Silver	E	Magnesium	yes	PABPE-SM-L
Silver	A	Magnesium	yes	PABPA-SM-L
Silver	E	Magnesium	no	PABPE-SM-X
Silver	A	Magnesium	no	PABPA-SM-X
Magnesium	E	White	yes	PABPE-MW-L
Magnesium	A	White	yes	PABPA-MW-L
Magnesium	E	White	no	PABPE-MW-X
Magnesium	A	White	no	PABPA-MW-X
Magnesium	E	Aluminum	yes	PABPE-MA-L

Magnesium	A	Aluminum	yes	PABPA-MA-L
Magnesium	E	Aluminum	no	PABPE-MA-X
Magnesium	A	Aluminum	no	PABPA-MA-X
Magnesium	E	Chrome	yes	PABPE-MC-L
Magnesium	A	Chrome	yes	PABPA-MC-L
Magnesium	E	Chrome	no	PABPE-MC-X
Magnesium	A	Chrome	no	PABPA-MC-X
Magnesium	E	Magnesium	yes	PABPE-MM-L
Magnesium	A	Magnesium	yes	PABPA-MM-L
Magnesium	E	Magnesium	no	PABPE-MM-X
Magnesium	A	Magnesium	no	PABPA-MM-X

This table shows every part code for Antumbra Button spares available for the different options.

Button Finish	Profile	Front Color	Rim Color	Custom Label	Part Number code
Spare - Antumbra Button	E	White	N/A	no	PABSBE-WX-X
Spare - Antumbra Button	E	White	N/A	yes	PABSBE-WX-L
Spare - Antumbra Button	E	Silver	N/A	no	PABSBE-SX-X
Spare - Antumbra Button	E	Silver	N/A	yes	PABSBE-SX-L
Spare - Antumbra Button	E	Magnesium	N/A	no	PABSBE-MX-X
Spare - Antumbra Button	E	Magnesium	N/A	yes	PABSBE-MX-L
Spare - Button Rim	E	N/A	White	N/A	PABSBE-XW
Spare - Button Rim	E	N/A	Aluminum	N/A	PABSBE-XA
Spare - Button Rim	E	N/A	Chrome	N/A	PABSBE-XC
Spare - Button Rim	E	N/A	Magnesium	N/A	PABSBE-XM
Spare - Application Module Kit	E	N/A	N/A	N/A	PABSBE-AMK
Spare - Antumbra Button	A	White	N/A	no	PABSBA-WX-X
Spare - Antumbra Button	A	White	N/A	yes	PABSBA-WX-L
Spare - Antumbra Button	A	Silver	N/A	no	PABSBA-SX-X
Spare - Antumbra Button	A	Silver	N/A	yes	PABSBA-SX-L
Spare - Antumbra Button	A	Magnesium	N/A	no	PABSBA-MX-X
Spare - Antumbra Button	A	Magnesium	N/A	yes	PABSBA-MX-L
Spare - Button Rim	A	N/A	White	N/A	PABSBA-XW
Spare - Button Rim	A	N/A	Aluminum	N/A	PABSBA-XA
Spare - Button Rim	A	N/A	Chrome	N/A	PABSBA-XC
Spare - Button Rim	A	N/A	Magnesium	N/A	PABSBA-XM
Spare - Button Application Module Kit	A	N/A	N/A	N/A	PABSBA-AMK
Spare - Antumbra Mounting Grid	E	N/A	N/A	N/A	PABSBE-GRID
Spare - Antumbra Mounting Grid	A	N/A	N/A	N/A	PABSBA-GRID
Spare - Antumbra Mounting Screws Kit	A	N/A	N/A	N/A	PABSBA-SCREWS
Spare - Antumbra Mounting Screws Kit	E	N/A	N/A	N/A	PABSBE-SCREWS
Sales Demo Kit –BUTTON	A	Demo	N/A	N/A	PABSBA-DEMOPACK
Sales Demo Kit –BUTTON	E	Demo	N/A	N/A	PABSBE-DEMOPACK

This part number describes a European **Antumbra touch panel** with **white** buttons, **white** rim and no button labelling. An example of this panel is shown below.



Product Type	Profile	Front Color	Rim Color	Custom label	Part Number Code
Antumbra Touch	E	White	White	yes	PATPE-WW-L
Antumbra Touch	E	White	White	no	PATPE-WW-X
Antumbra Touch	E	White	Aluminum	yes	PATPE-WA-L
Antumbra Touch	E	White	Aluminum	no	PATPE-WA-X
Antumbra Touch	E	White	Chrome	yes	PATPE-WC-L
Antumbra Touch	E	White	Chrome	no	PATPE-WC-X
Antumbra Touch	E	White	Black	yes	PATPE-WB-L
Antumbra Touch	E	White	Black	no	PATPE-WB-X
Antumbra Touch	E	Black	White	yes	PATPE-BW-L
Antumbra Touch	E	Black	White	no	PATPE-BW-X
Antumbra Touch	E	Black	Aluminum	yes	PATPE-BA-L
Antumbra Touch	E	Black	Aluminum	no	PATPE-BA-X
Antumbra Touch	E	Black	Chrome	yes	PATPE-BC-L
Antumbra Touch	E	Black	Chrome	no	PATPE-BC-X
Antumbra Touch	E	Black	Black	yes	PATPE-BB-L
Antumbra Touch	E	Black	Black	no	PATPE-BB-X
Antumbra Touch	A	White	White	yes	PATPA-WW-L
Antumbra Touch	A	White	White	no	PATPA-WW-X
Antumbra Touch	A	White	Aluminum	yes	PATPA-WA-L
Antumbra Touch	A	White	Aluminum	no	PATPA-WA-X
Antumbra Touch	A	White	Chrome	yes	PATPA-WC-L
Antumbra Touch	A	White	Chrome	no	PATPA-WC-X
Antumbra Touch	A	White	Black	yes	PATPA-WB-L
Antumbra Touch	A	White	Black	no	PATPA-WB-X
Antumbra Touch	A	Black	White	yes	PATPA-BW-L
Antumbra Touch	A	Black	White	no	PATPA-BW-X
Antumbra Touch	A	Black	Aluminum	yes	PATPA-BA-L
Antumbra Touch	A	Black	Aluminum	no	PATPA-BA-X
Antumbra Touch	A	Black	Chrome	yes	PATPA-BC-L
Antumbra Touch	A	Black	Chrome	no	PATPA-BC-X
Antumbra Touch	A	Black	Black	yes	PATPA-BB-L
Antumbra Touch	A	Black	Black	no	PATPA-BB-X
Spare - Touch Glass	E	White	N/A	no	PATSTE-WX-X
Spare - Touch Glass	E	White	N/A	yes	PATSTE-WX-L
Spare - Touch Glass	E	Black	N/A	no	PATSTE-BX-X
Spare - Touch Glass	E	Black	N/A	yes	PATSTE-BX-L
Spare - Touch Rim	E	N/A	White	N/A	PATSTE-XW
Spare - Touch Rim	E	N/A	Aluminum	N/A	PATSTE-XA
Spare - Touch Rim	E	N/A	Chrome	N/A	PATSTE-XC
Spare - Touch Rim	E	N/A	Black	N/A	PATSTE-XB
Spare - Touch Application Module Kit	E	N/A	N/A	N/A	PATSTE-AMK
Spare - Touch Glass	A	White	N/A	no	PATSTA-WX-X
Spare - Touch Glass	A	White	N/A	yes	PATSTA-WX-L

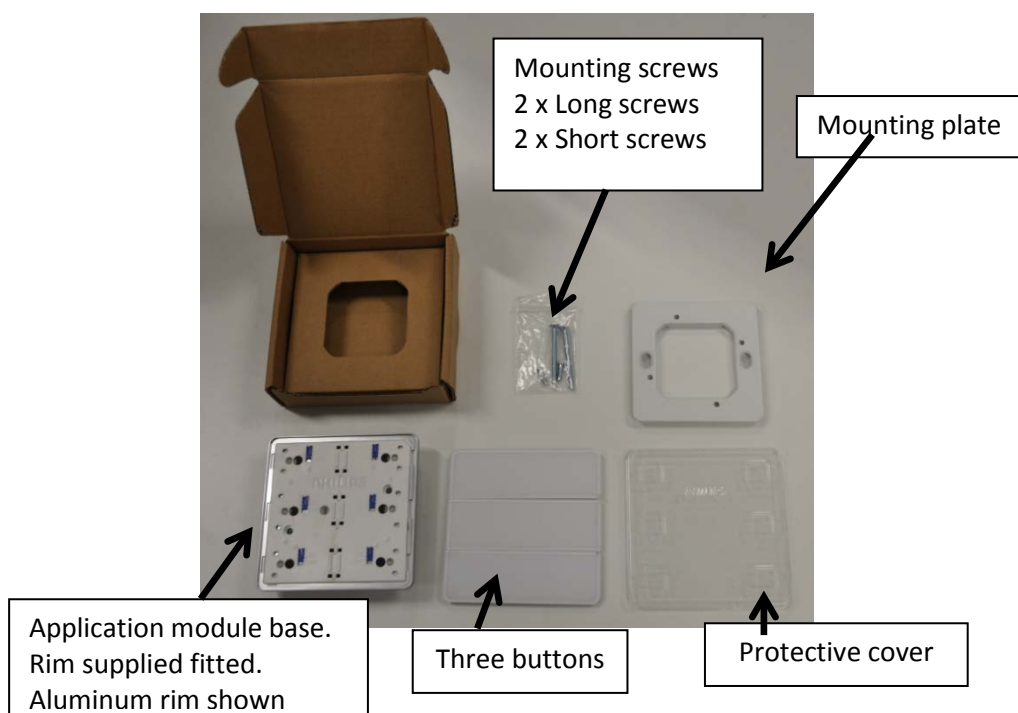
Product Type	Profile	Front Color	Rim Color	Custom label	Part Number Code
Spare - Touch Glass	A	Black	N/A	no	PATSTA-BX-X
Spare - Touch Glass	A	Black	N/A	yes	PATSTA-BX-L
Spare - Touch Rim	A	N/A	White	N/A	PATSTA-XW
Spare - Touch Rim	A	N/A	Aluminum	N/A	PATSTA-XA
Spare - Touch Rim	A	N/A	Chrome	N/A	PATSTA-XC
Spare - Touch Rim	A	N/A	Black	N/A	PATSTA-XB
Spare - Touch Application Module Kit	A	N/A	N/A	N/A	PATSTA-AMK
Sales Demo Kit – TOUCH	E	Demo	N/A	N/A	PATSTE-DEMOPACK
Sales Demo Kit – TOUCH	A	Demo	N/A	N/A	PATSTA-DEMOPACK

Application module

Below is the packaging for a single **Antumbra button panel** application module.



All the components required for mounting the Antumbra button panel.



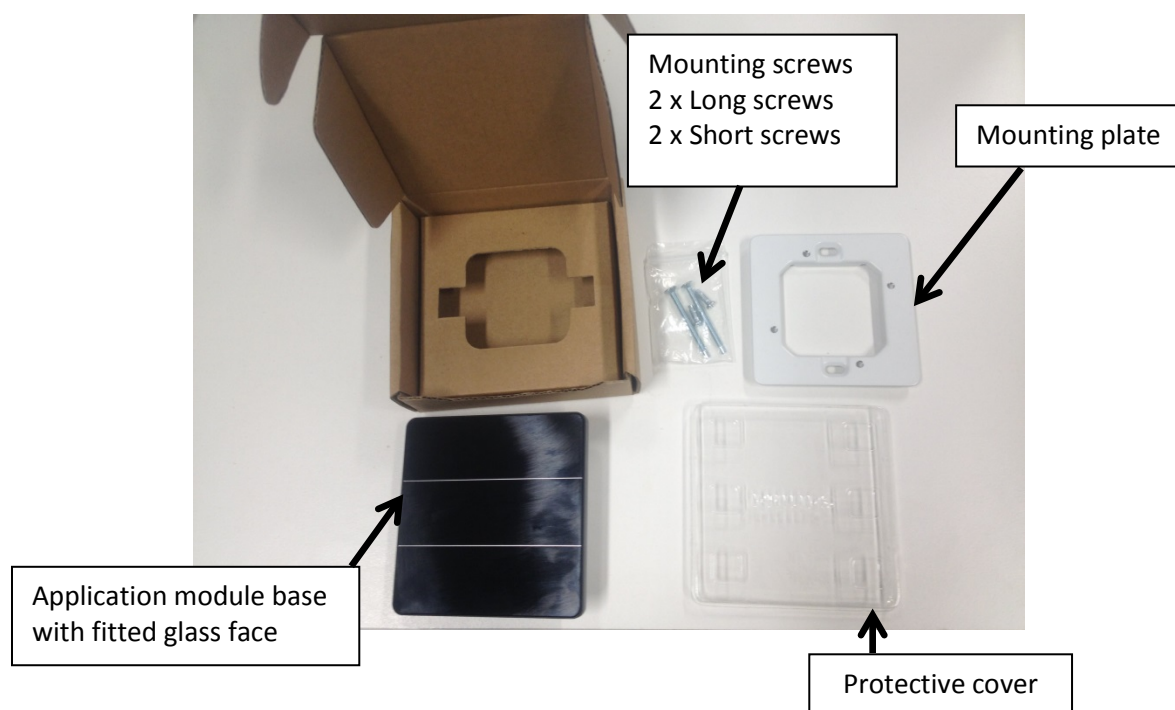
The Application module base contains all the sensory devices for the panel. All indicator and wall wash LEDs are also mounted within the unit. A rubber membrane is just behind the plastic face plate to give the internal electronics some protection. There are no programmable components to the application module base. The application module base is

supplied with rim finish mounted, this can be gently removed if required to be swapped for another finish by pulling the rim forward. There is a locating key in the top right hand side of the panel to ensure that a replacement rim is mounted the right way around.

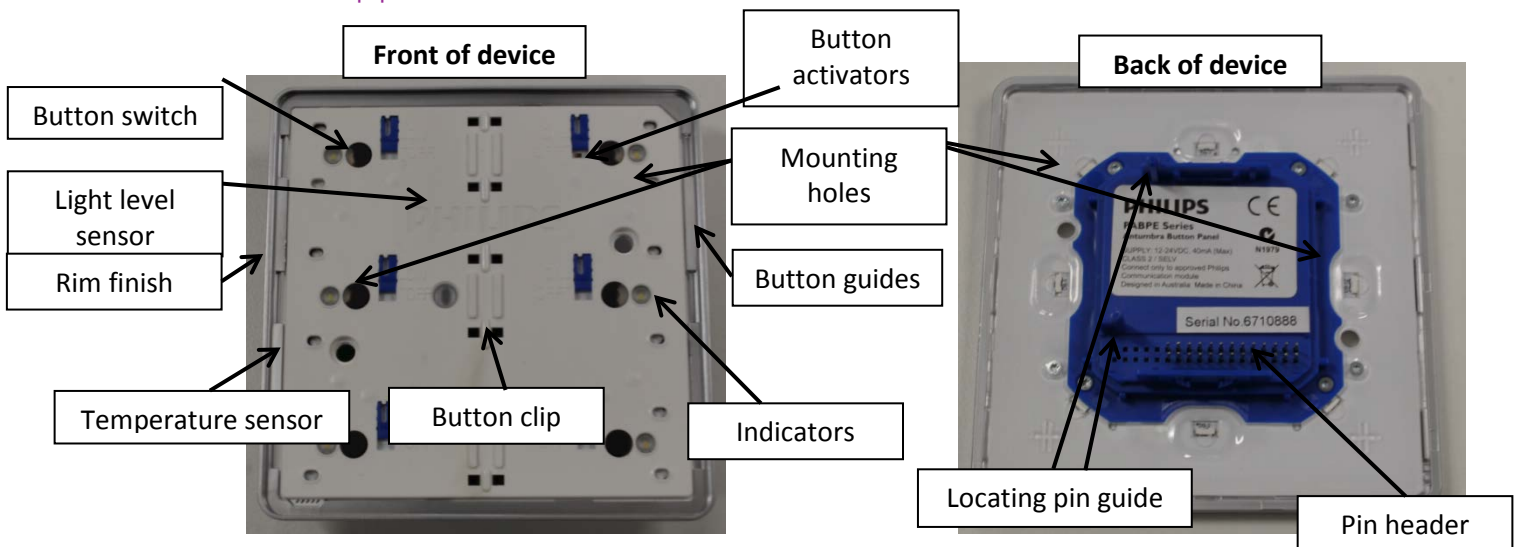
Below is the packaging for **Antumbra Touch panel** application module.



All the components required for mounting the Antumbra button panel.



Application module base of Antumbra button in detail.



Button Switch -Behind a rubber membrane the electronic micro switch is mounted.

Light level sensor - To measure the local area current light level so that the indicating and wall wash LED come on at the appropriate level. This sensor cannot be used for daylight harvesting functions.

Rim finish - Optional rim finish for the panel.

Temperature sensor -A network temperature sensor that can be programmed to respond to changes in temperature

Button clip -The main locking point for the buttons. Buttons must be clicked into this location first

Indicators - White indicators that can have programmed response. Indicators shine through hidden light wells in button.

Button Guides - The sides of the buttons locate into these grooves to guide the button movement.

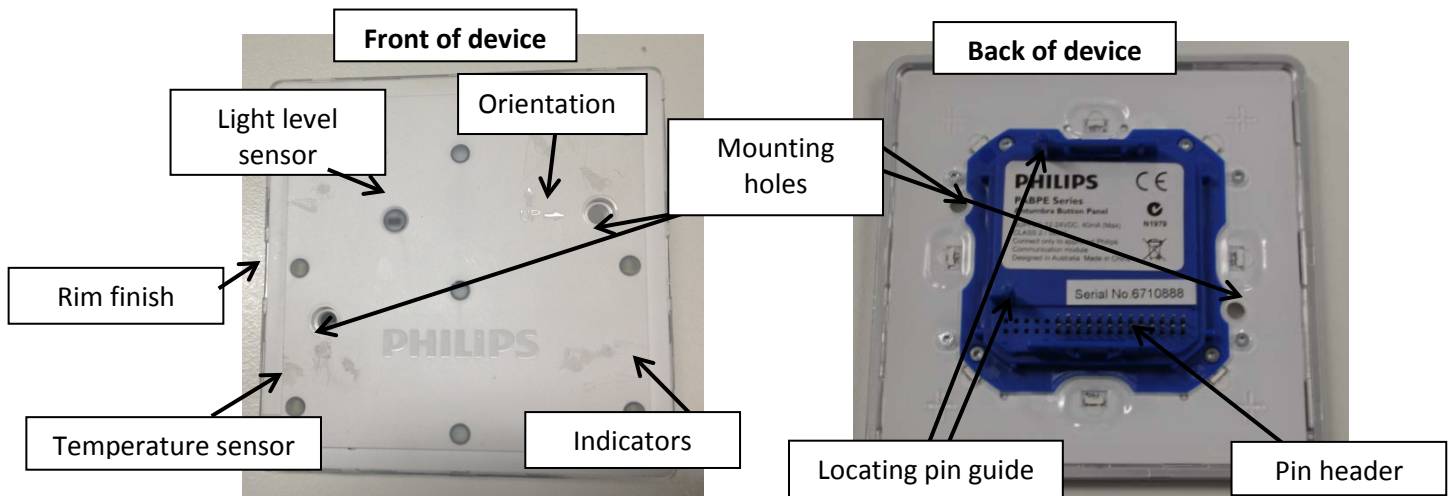
Mounting Holes - The short screws protrude through the front of the panel to secure into the mounting bracket.

Button Activators - A blocking wedge that can be set into place to stop the button from mechanical pressing down onto the button switch. This allows the panel to be configured between one to six buttons.

Locating pin guide - Provides a guide on correctly locating the communication module onto the application module.

Pin header - Communication port between the Application module and Communication module. No detail is given to the individual pin functions.

Application Module base of Antumbra Touch in detail



Light level sensor - To measure the local area current light level so that the indicating and wall wash LED come on at the appropriate level. This sensor cannot be used for daylight harvesting functions.

Rim finish - Optional rim finish for the panel.

Temperature sensor - A network temperature sensor that can be programmed to respond to changes in temperature

Indicators - White indicators that can have programmed response. Indicators shine through hidden light wells in button.

Orientation – displays arrows which indicate the direction at which the panel should be mounted

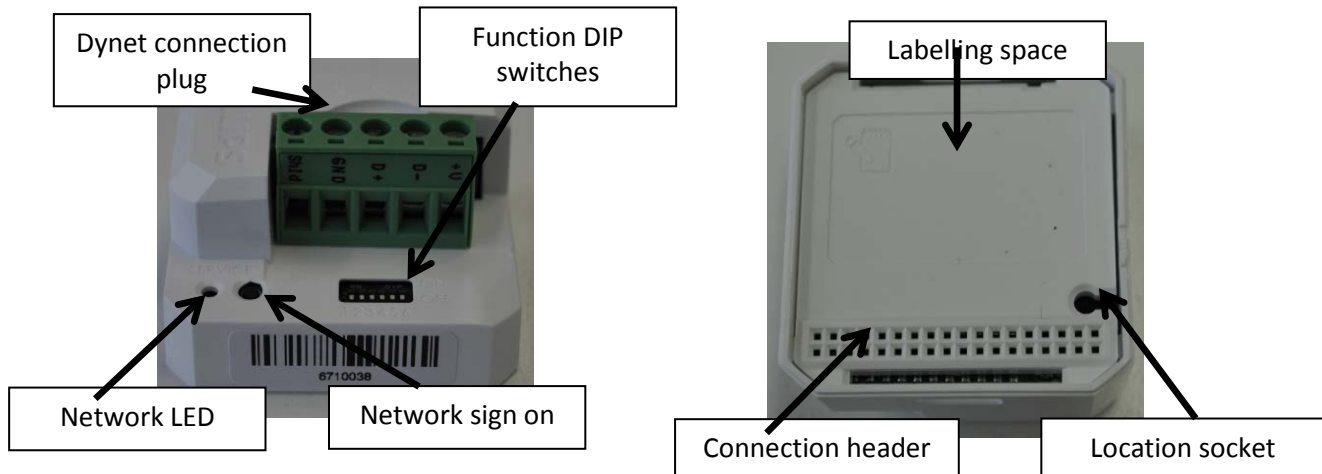
Mounting Holes - The short screws protrude through the front of the panel to secure into the mounting bracket.

Locating pin guide - Provides a guide on correctly locating the communication module onto the application module.

Pin header - Communication port between the Application module and Communication module. No detail is given to the individual pin functions.

Communication Module

The Communication module contains the microprocessor and stores all the panels settings. This unit can be pre-programmed off site and connected to the sites Dynet network without the application module if required. The communication module has no way of being physically mounted within a wall box without the Application module.



Dynet connection - A removable five-way terminal block where the Dynet network is physically terminated. Please see the following page for more details.

Network LED - This is a network indicator to show that the panel is powered and functions correctly. The LED will pulse every few seconds to indicate the panel is functioning correctly.

Network sign on - A micro switch that can be used with a small screw driver to make the Communication module broadcast its ID over the Dynet network.

Function DIP switches - An advanced feature of the device that can be used on large sites with only a few different panel configurations required such as hotel room projects.

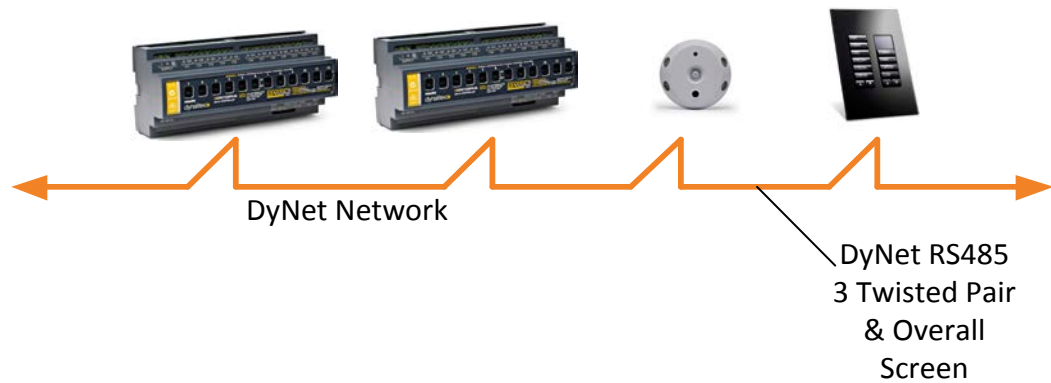
Connection header - To connect with the electronics in the application module.

Location socket - To correctly align the connection between the Communication module and the application module.

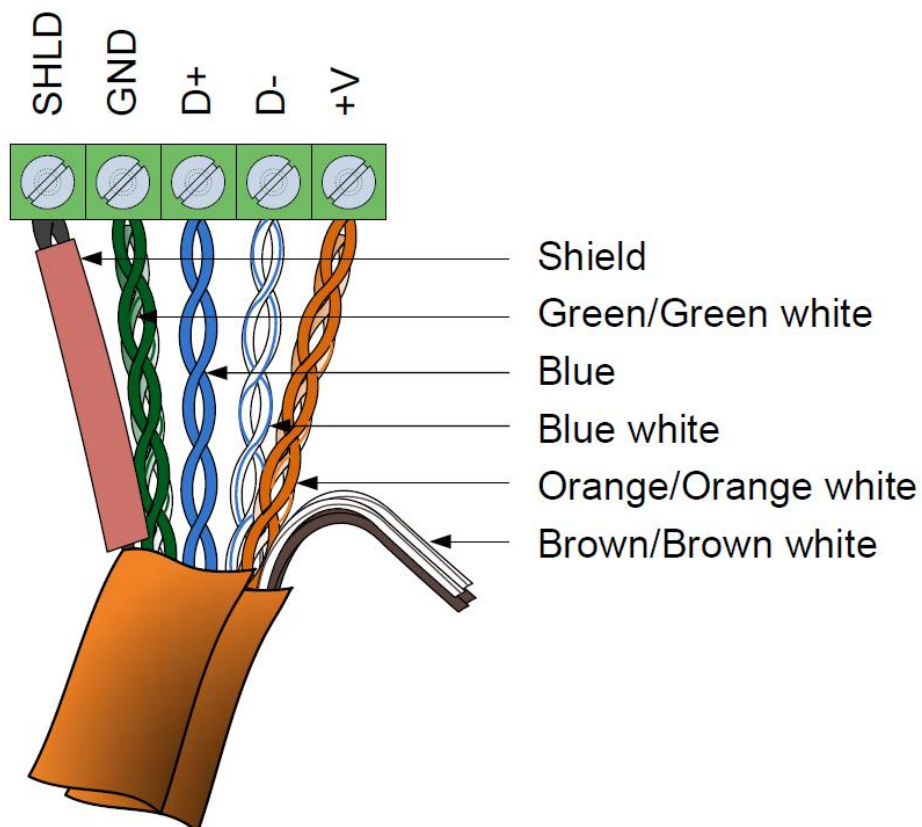
Labeling space - When communication modules are pre-programmed, the required location for the panel can be shown here for easy identification.

Network termination

When installing any Philips Dynalite system it is important to maintain a daisy chain network path between all devices. Never connect network devices to a live network. Always power down all load controllers and network power supplies before adding or adjusting the Dynet network.



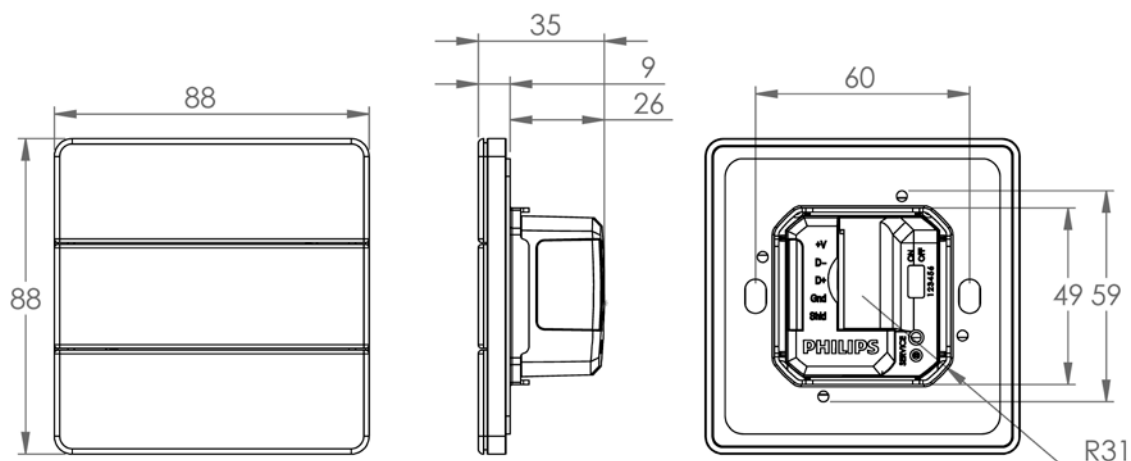
Disconnect the five way screw socket on the back of the Communication module. Terminate the network cable following the diagram below. All devices need to be terminated correctly as shown.



More details on correct network installation can be found in the Philips Dynalite installers courses.

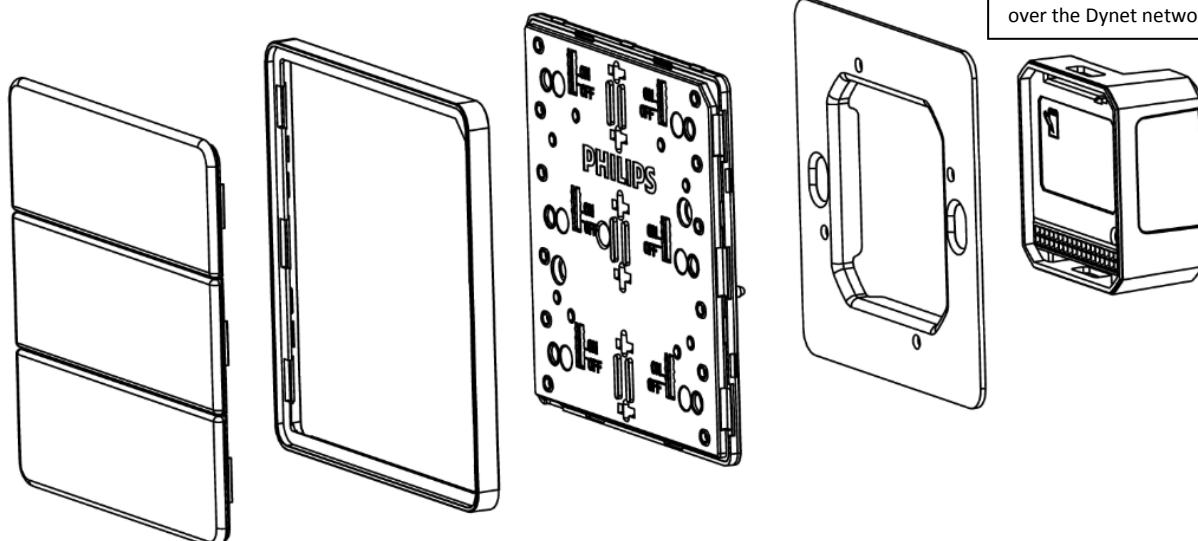
Antumbra Button

Panel Dimension



Layer view:

Below is view of all the components of the Antumbra button panel.



Communication module:

Supplied separately the Communication module stores all the network panels settings and capacity to communicate over the Dynet network.

Buttons:

Three separate pieces make up the buttons. The buttons contain a hidden window for the indicator

Rim:

The rim is made of a single piece. The rim has built in ventilation for temperature sensor

Base:

Containing all the sensory input devices, indicating LED & light wash effect. All components of the Antumbra panel mount together into the base unit

Mounting plate:

A metal mounting plate allows for installation into standard wall box.

Installing the Antumbra button panel

Antumbra Panel series are supplied from DyNet network which is classified as SELV/Class II (for NA) Overvoltage category III in accordance with IEC60664-1 (0.8 kV surge).

Recommended DyNet network topology is Daisy Chain.

Total network power supply current contribution shall not exceed Dynet cable current rating. Use approved DyNet power supplies only with incorporated overload protection.

Ensure installation of Antumbra Panel Series is compliance with HD 60364 - 41 where applicable.

Caution: Disconnect Dynet before attachment of Application Module.

For a full installation, both the Application & Communication modules are required.

The Communication module and Application module will lock in together when the locating pin on the Application module lines up with the locating socket in Communication modules



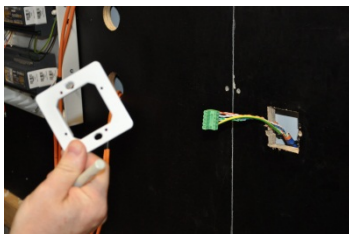


If required the Communication module and Application module can be separated again by using a small screw driver to gently unlock two clips either side of the Communication module

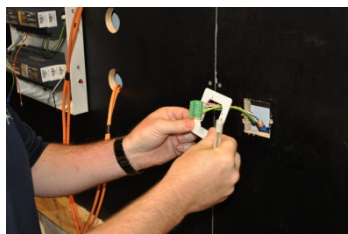
The mounting plate will fit any standard size European wall box or a wall cut out of **51mm x 51mm**. If using wall mounting then the smaller base mounting screw locations should also have small indent behind them, made into the wall so there is no interference from the screws while mounting the panel. The Mounting box must have a depth of **33mm** to contain all the panel components and network cabling. Remember that there will be a need for two network cables in the wall box.

¹ The mounting plate needs to be installed with the locating tabs into the wall. ² The network cables and connector plug pulls through the mounting bracket. ³ The plate's orientation can be either way. Using the long mounting screws provided fix the mounting bracket to the wall. Installers must use the screws provided as different screws could damage the panel once fully installed.

1



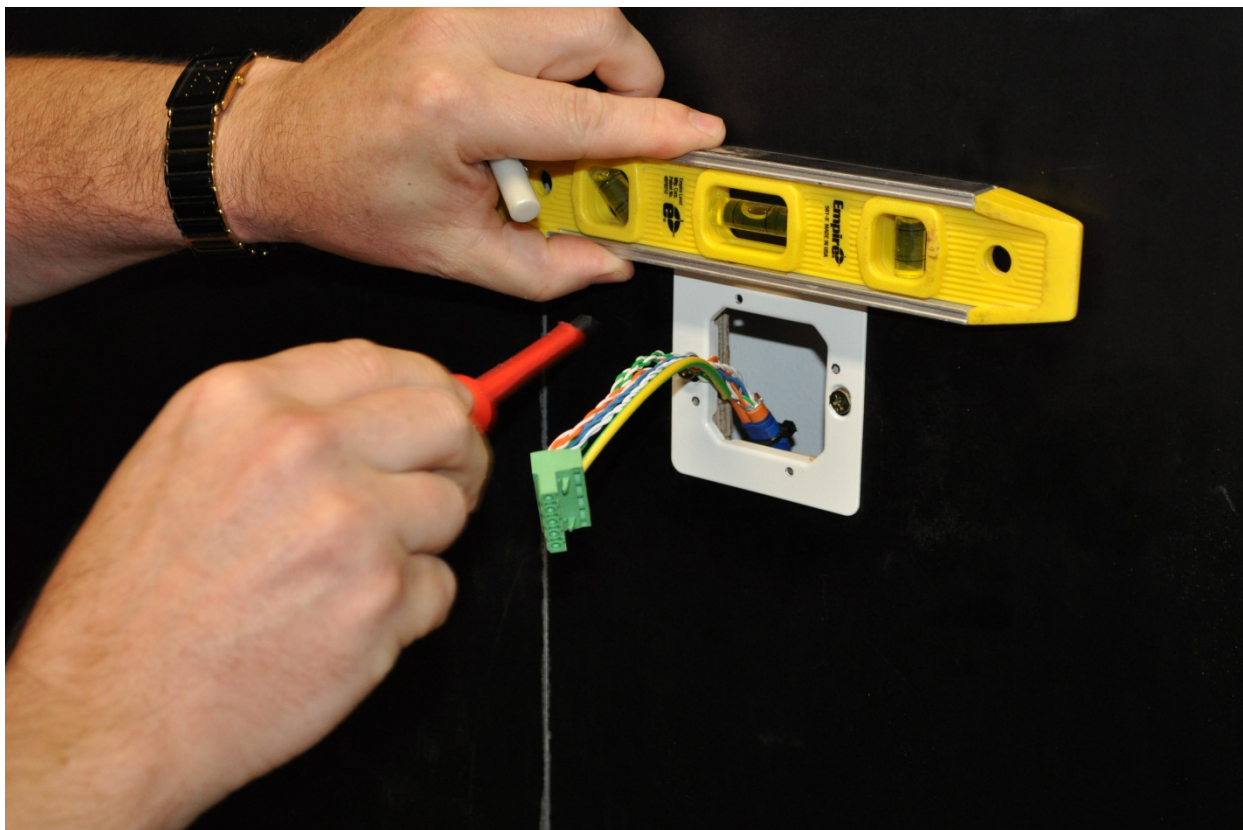
2



3



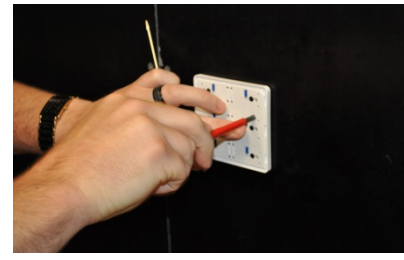
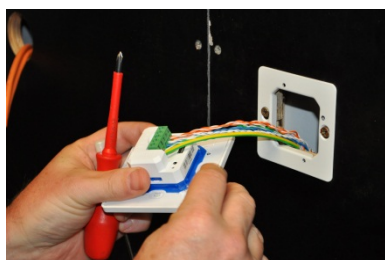
Ensure that the mounting plate is levelled and make adjustments if required.



Once the mounting bracket is mounted plug the five-way network socket into the mounted Communications module.



The whole panel assembly can be pushed into the mounting bracket. Locate and fix the application base to the mounting bracket using the two smaller screws through the mounting holes. Recheck the level of the panel and adjust if required.



Individual buttons can be disabled if a particular panel location does not require all six buttons to be used. By using the blue switches and buttons, mechanical action can be switched on or off.

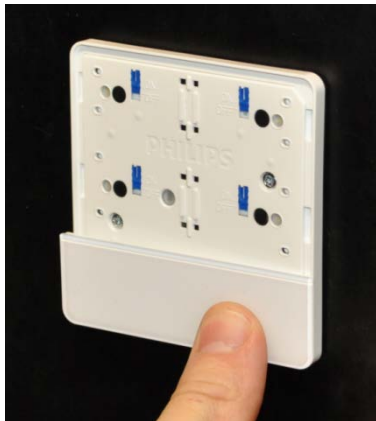


In 'off' position



In 'on' position

Once the buttons disable and enables have been set, the final buttons can be clicked in. The order of buttons being mounted is not important. When mounting the buttons, first click in the centre clips of the button to the application base, then make sure the button guides line up within the application base too. The end result should be a smooth button action.

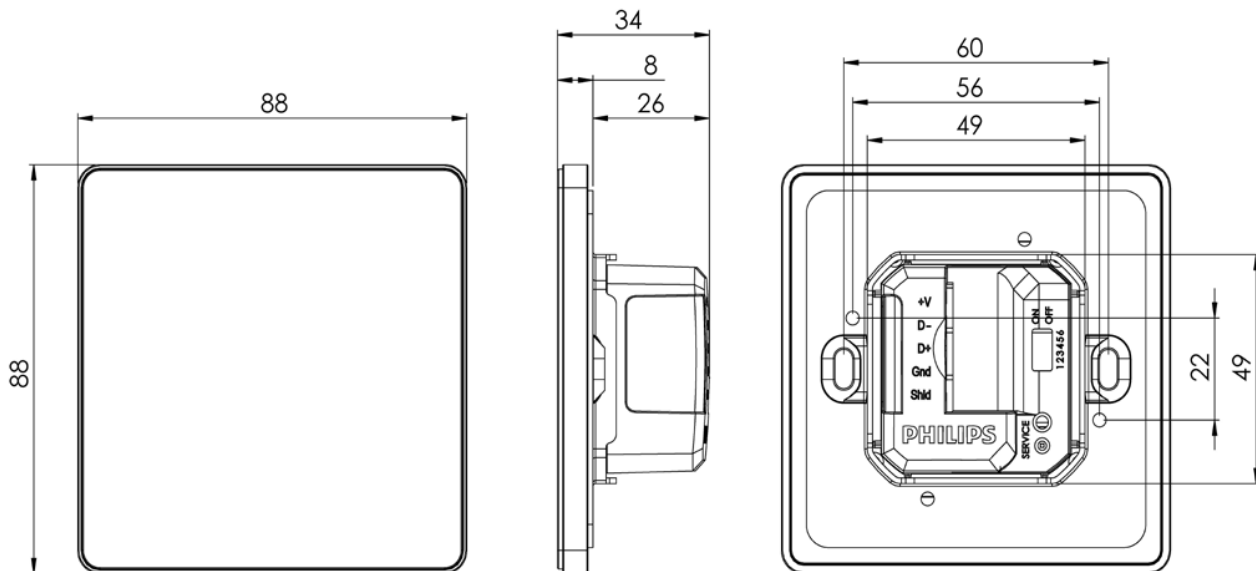


Test each of the enabled buttons for a positive click when pressed. If any enabled button does not have a positive click when pressed, check for obstructions or the disable switch being set incorrectly.



Antumbra Touch

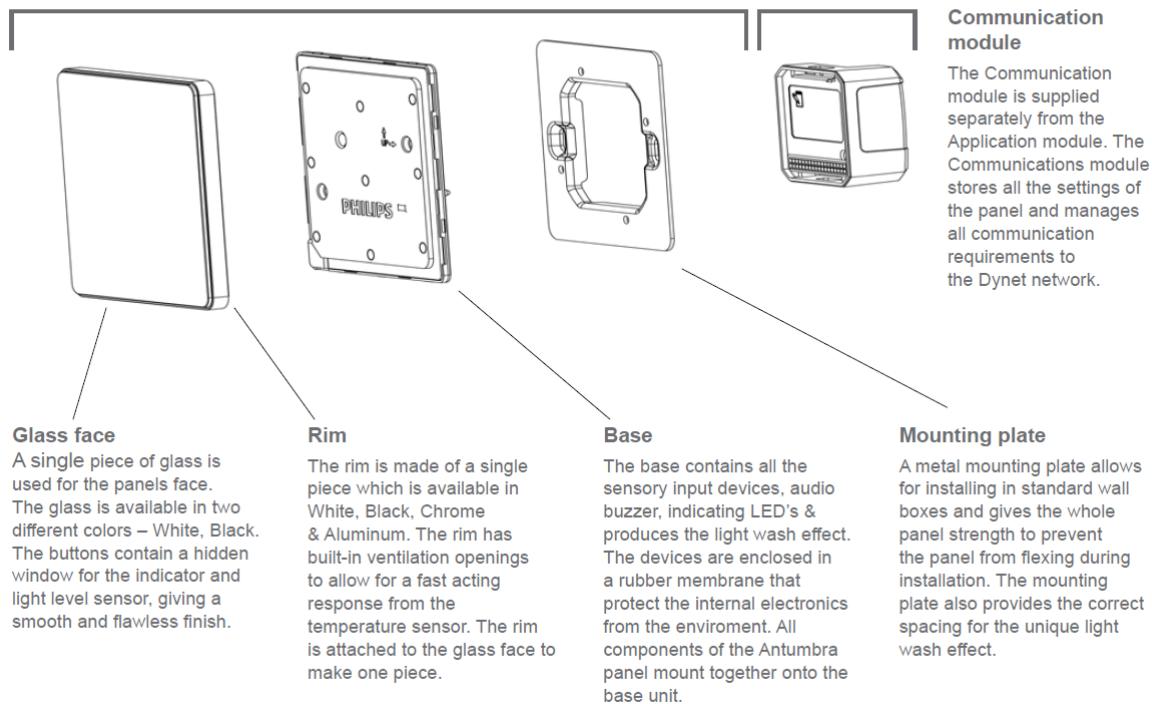
Panel Dimensions:



Layer View:

Application module

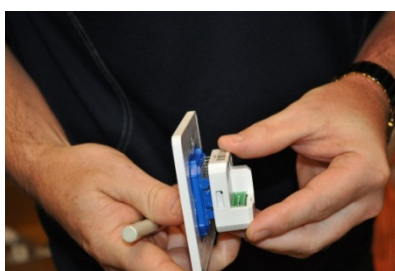
All components are supplied pre-assembled together.



Installing Antumbra Touch panels

For a full installation, both the Application & Communication modules are required.

The Communication module and Application module will lock in together when the locating pin on the Application module lines up with the locating socket in Communication module's

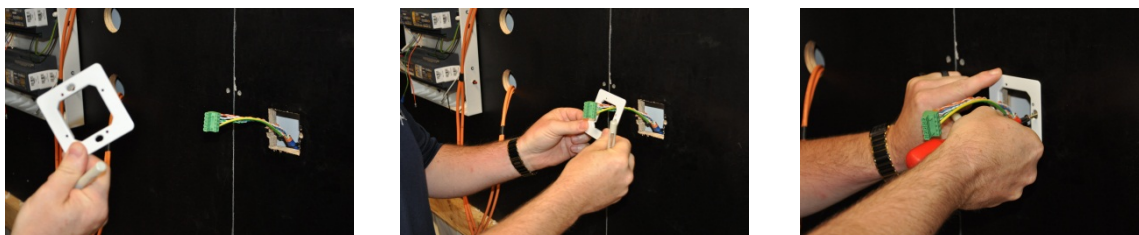


If required the Communication module and Application module can be separated again by using a small screw driver to gently unlock two clips either side of the Communication module

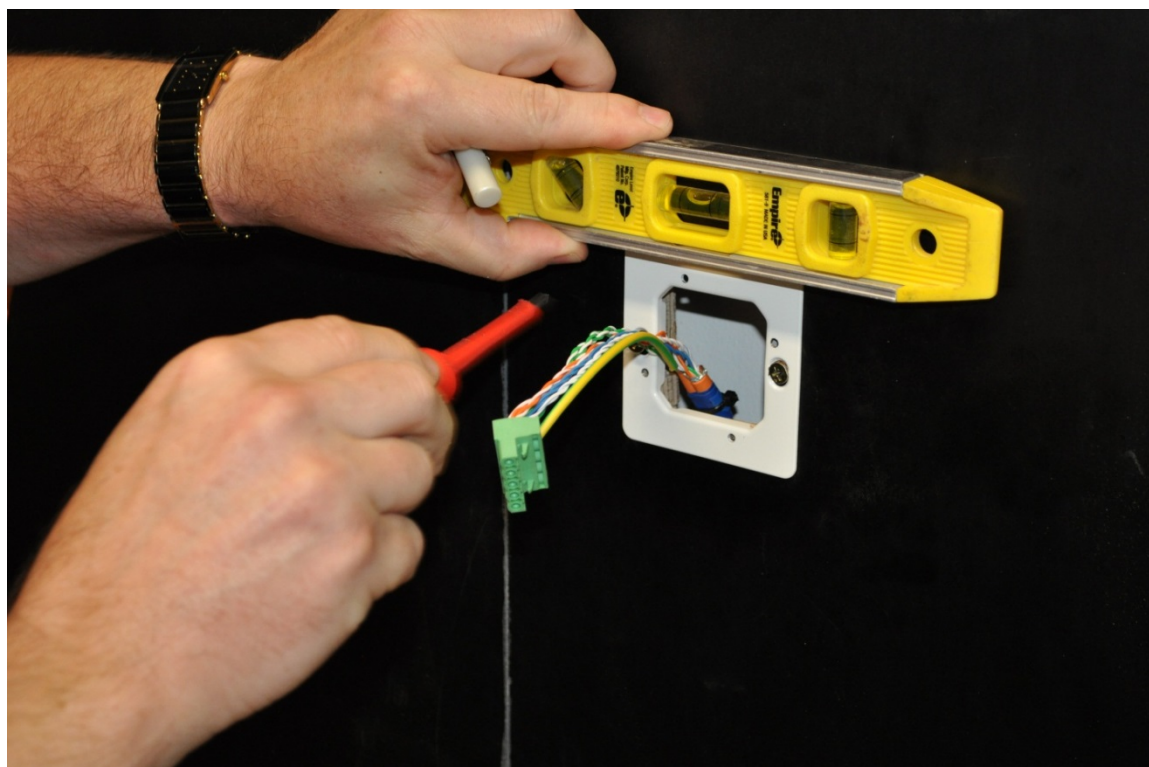
The mounting plate will fit any standard size European wall box or a wall cut out of **51mm x 51mm**. If using wall mounting then the smaller base mounting screw locations should also have small indent behind them, made into the wall so there is no interference from the screws while mounting the panel. The Mounting box must have a depth of **33mm** to contain

all the panel components and network cabling. Remember that there will be a need for two network cables in the wall box.

¹ The mounting plate needs to be installed with the locating tabs into the wall. ² The network cables and connector plug pulls through the mounting bracket. ³ The plate's orientation can be either way. Using the long mounting screws provided fix the mounting bracket to the wall. Installers must use the screws provided as different screws could damage the panel once fully installed.



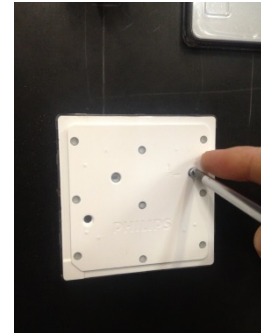
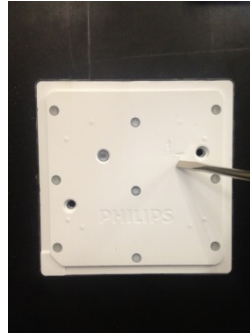
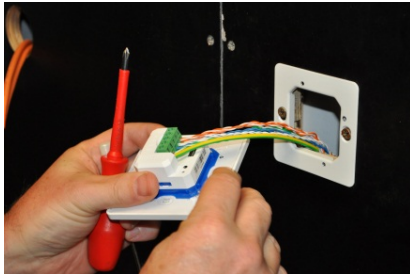
Ensure that the mounting plate is level and make adjustments if required.



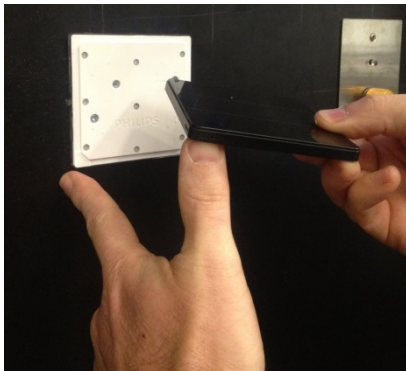
Once the mounting bracket is mounted plug the five-way network socket into the mounted Communications module.



The whole panel assembly can be pushed into the mounting bracket. Locate and fix the application base to the mounting bracket using the two smaller screws through the mounting holes. Recheck the level of the panel and adjust if required.



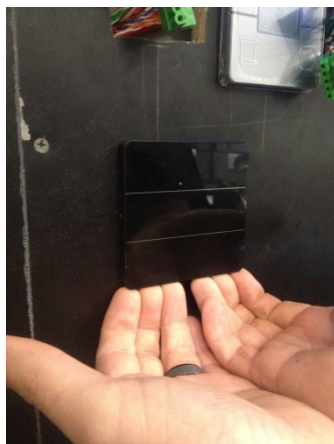
Check for the orientation arrows when fixing the application base on the mounting bracket.



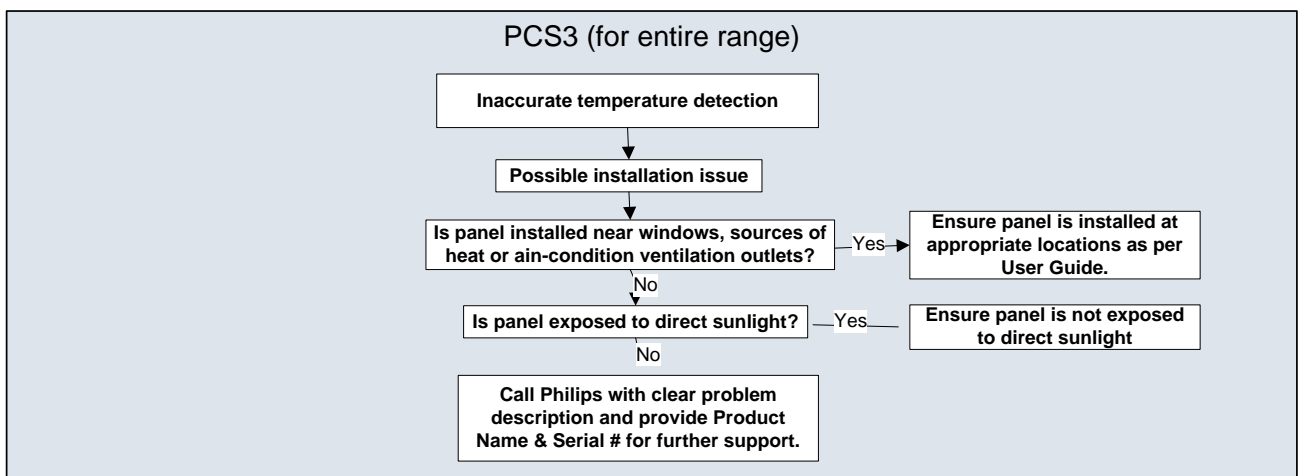
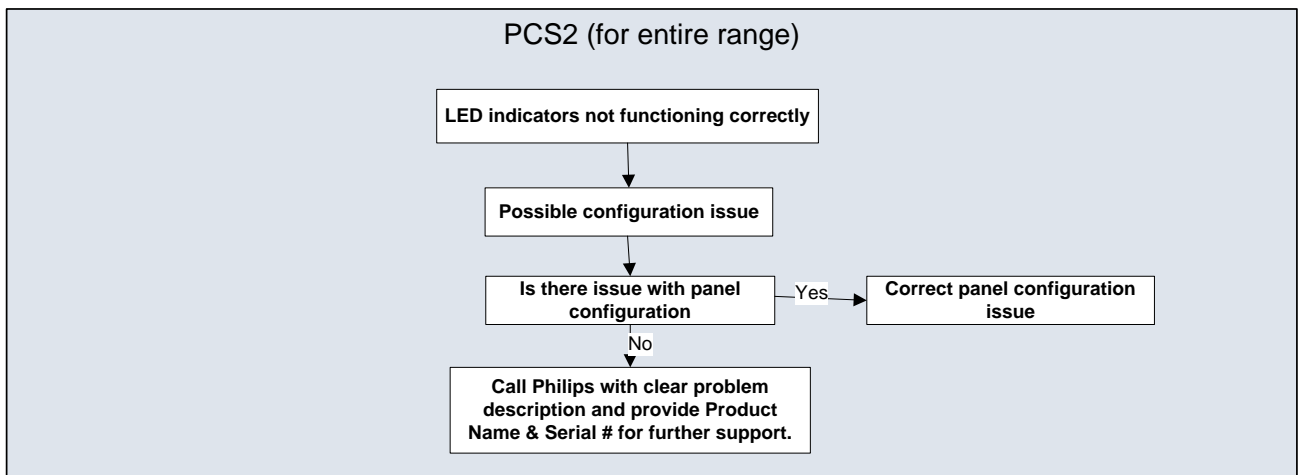
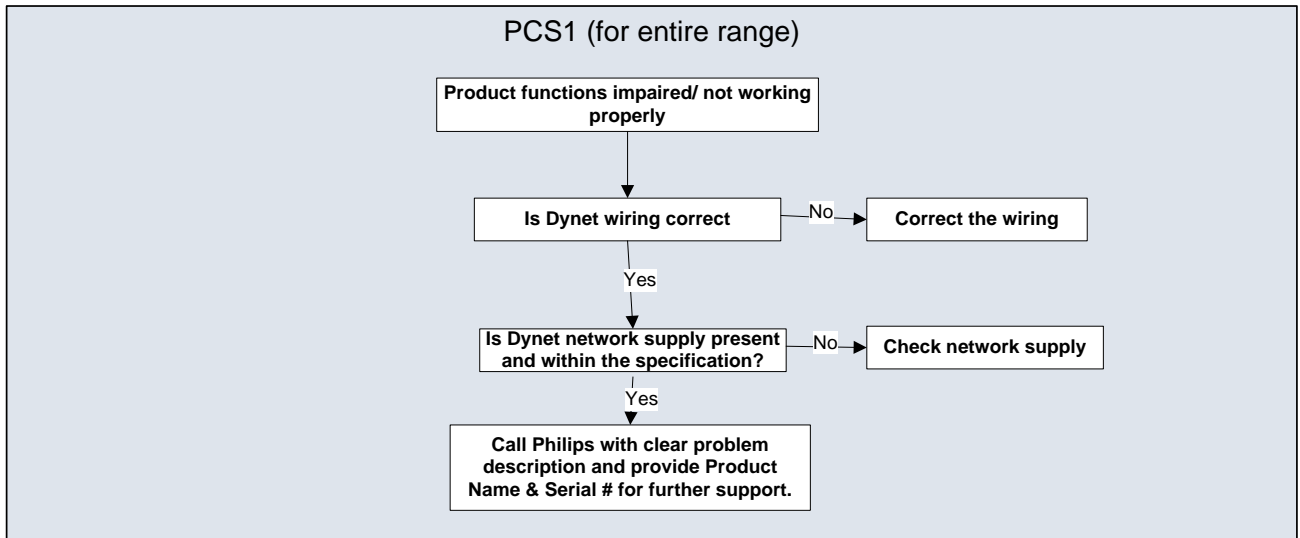
The air vents for the temperature sensor on the glass face should be placed on the top of the temperature sensor on the application base as shown the picture above.

Place the glass face on the application base and gently press it to fix the panel to the base.

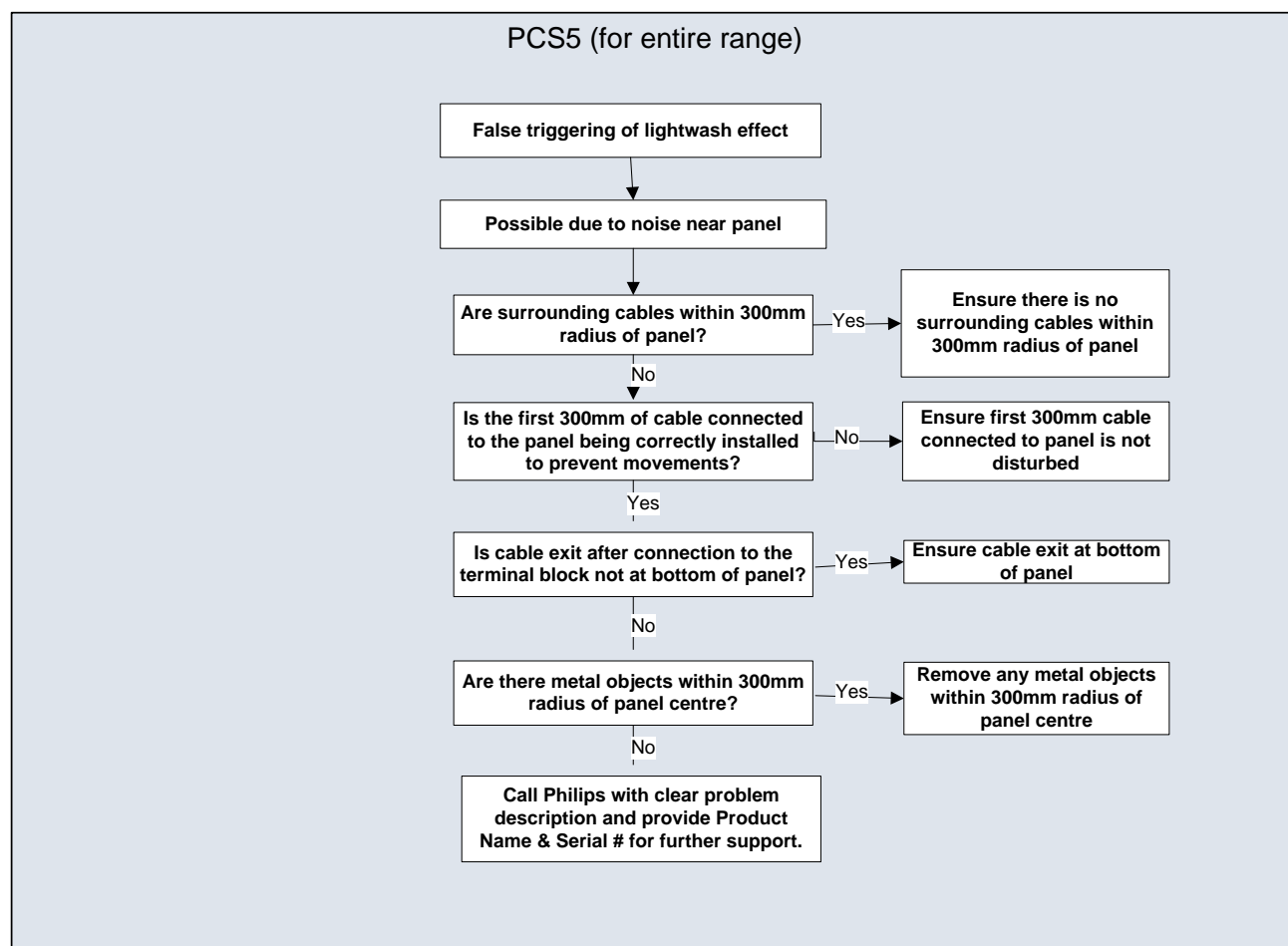
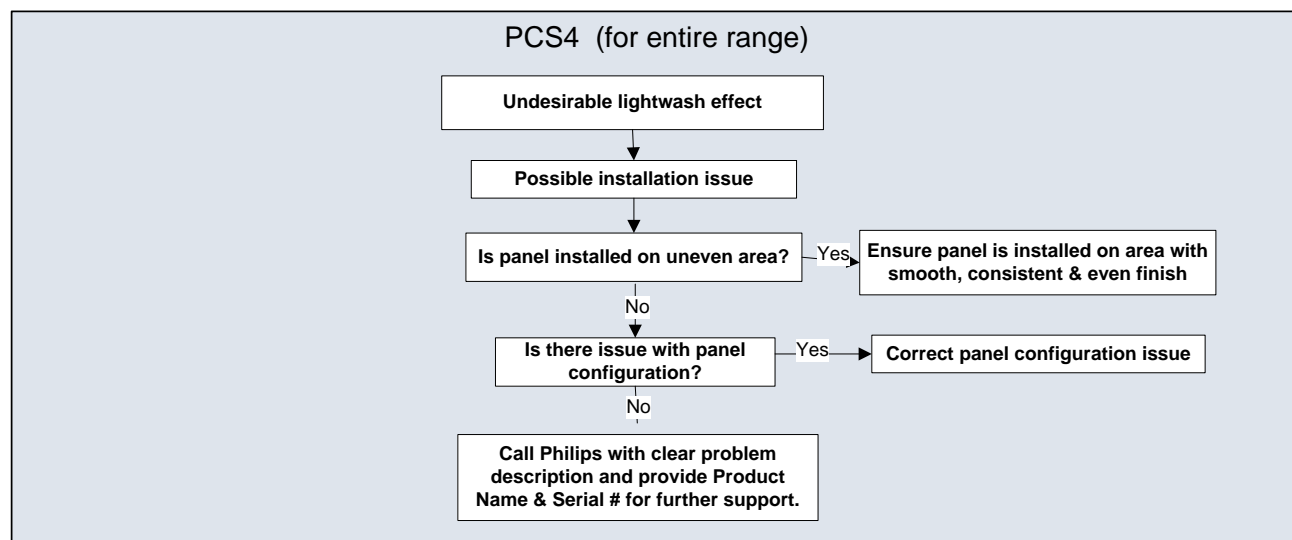
To remove the glass face from the application base, loosen the glass face from the bottom and then the sides and later lift it from the application base. The pictures below show the correct way of removing the glass face from the application base.



Antumbra Error Search Tree

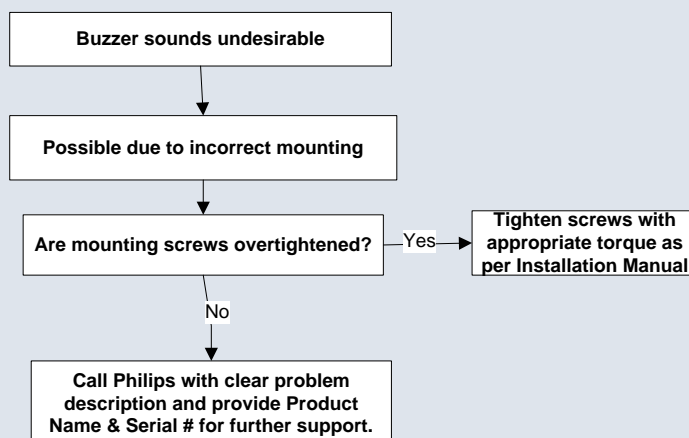


Note: PCS = Problem Cause Solution

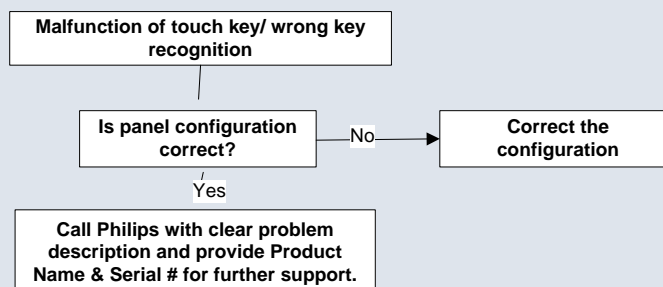


Note: PCS = Problem Cause Solution

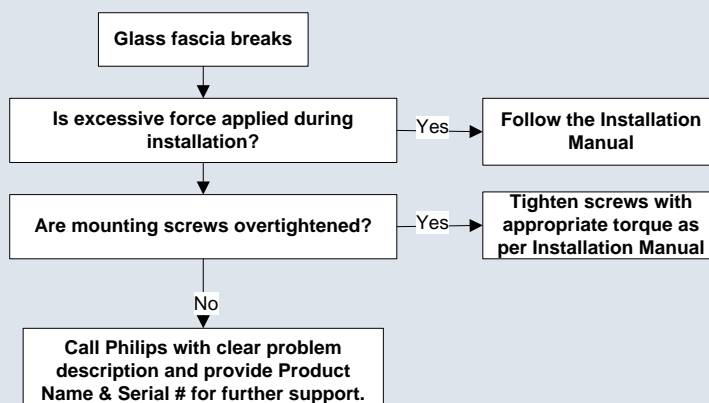
PCS6 (for Touch panel only)



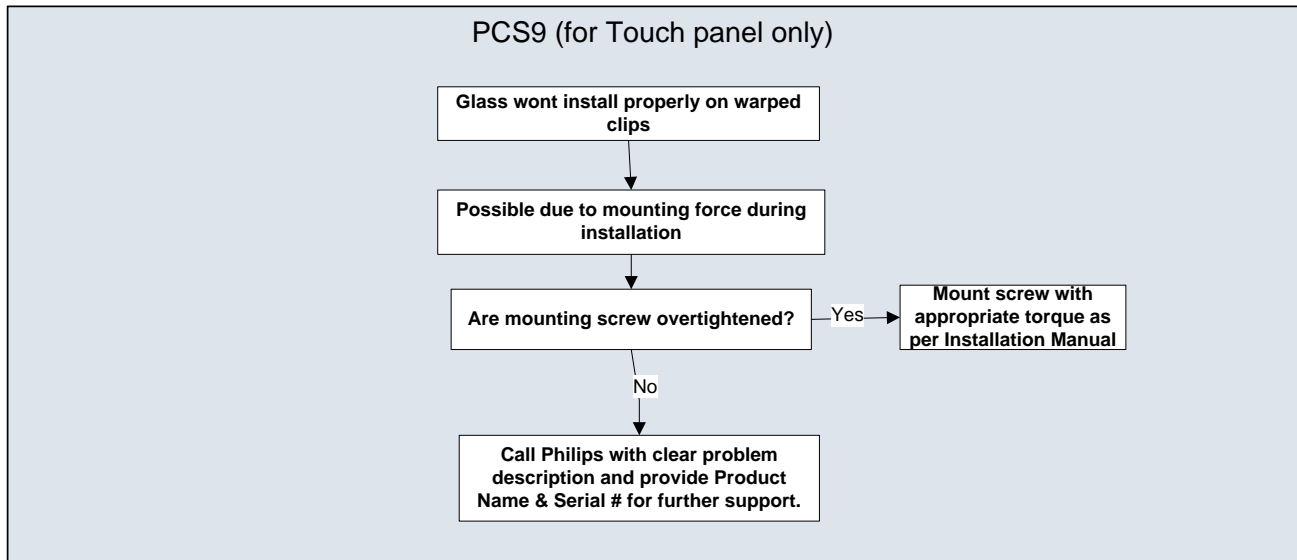
PCS7 (for entire range except Button panel)



PCS8 (for Touch panel only)



Note: PCS = Problem Cause Solution



Note: PCS = Problem Cause Solution



© 2013 Koninklijke Philips Electronics N.V.
All rights reserved.

Philips International B.V.
The Netherlands

Document Revision: A