



Date: _____ Type: _____

Firm Name: _____

Project: _____

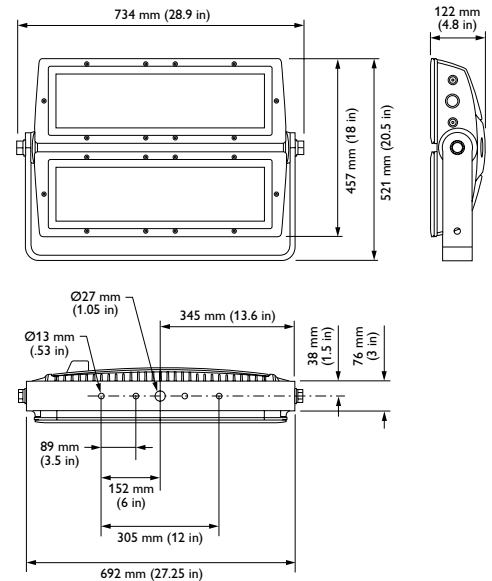
eW Reach Powercore gen2

5° × 17° asymmetric spread lens, UL / CE

Premium long-throw exterior LED floodlight with solid white light

eW Reach Powercore gen2 combines all the benefits of LED-based lighting and control in an elegant fixture specifically designed for large-scale installations, such as skyscrapers, casinos, bridges, piers, public monuments, and themed attractions. With significantly more lumen output than any other competitive fixture and unprecedented light projection, this powerful fixture represents the next generation in exterior illumination. Fixtures are available in a warm 2700 K or a cool 4000 K. Custom configurations with custom channels of white or color LED sources are also available to support special applications.

- Integrates Powercore technology — Powercore technology rapidly, efficiently, and accurately controls power output to fixtures directly from line voltage.
- Unparalleled light output — Fixtures produce thousands of lumens and throw light hundreds of feet. eW Reach Powercore gen2 offers legitimate LED-based white light illumination of large-scale structures and objects.
- Versatile optics — Exchangeable spread lenses of 8°, 13°, 23°, 40°, 63°, and an asymmetric 5° × 17° support a variety of photometric distributions for a multitude of applications, including spot lighting, wall grazing, and asymmetric wall washing. Bezel and gasket are included with spread lenses for easy user installation.
- Unique split design — Spread lenses fit over each half of the fixture to support diffuser combinations. For instance, you could use one spread lens on the fixture's lower half to bathe a large façade with light at street level, and a different spread lens to project light hundreds of feet up the building's walls.



- Simple fixture positioning — Rugged, slim-profile mounting bracket allows simple positioning and fixture rotation through a full 360°. Side locking bolts reliably secure fixture with a standard wrench.
- Universal power input range — eW Reach Powercore gen2 accepts a universal power input range of 100 – 277 VAC, allowing consistent installation in any location around the world.

For detailed product information, please refer to the eW Reach Powercore gen2 Product Guide at www.philipscolorkinetics.com/ls/essentialwhite/ewreach/

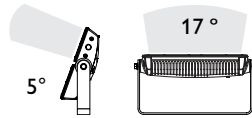


Photometrics / eW Reach Powercore, 5° x 17° spread lens

Photometric data is based on test results from an independent NIST traceable testing lab. IES data is available at www.philipscolorkinetics.com/support/ies.

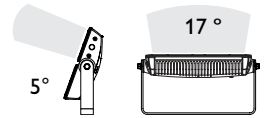
2700 K

Lumens	5,306
Efficacy	43.3 lm / W

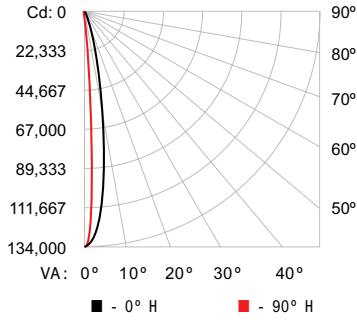


4000 K

Lumens	6,212
Efficacy	49.2 lm / W

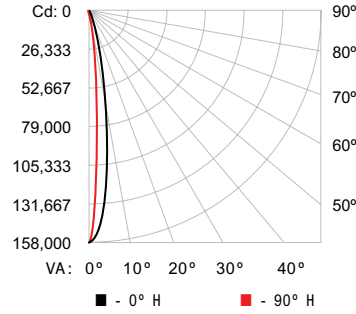


Polar Candela Distribution



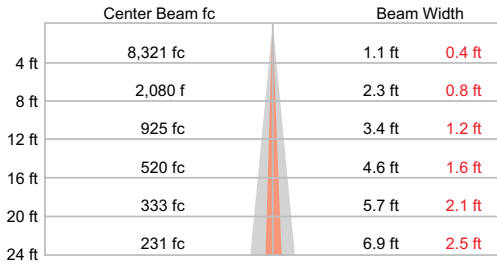
	0	25	45	70	90
0	133130	133130	133130	133130	133130
5	108660	92993	57317	28527	22636
15	18232	2960	1121	691	626
25	1150	330	249	218	216
35	264	155	139	121	120
45	149	83	71	67	65
55	97	54	48	48	49
65	66	43	37	36	34
75	43	33	30	28	27
85	27	26	25	25	25
90	25	25	25	25	25

Polar Candela Distribution



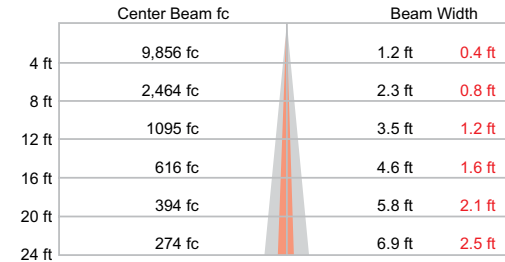
	0	25	45	70	90
0	157700	157700	157700	157700	157700
5	121900	95352	57879	31211	24775
15	18300	2609	1082	704	652
25	1139	340	273	251	250
35	290	171	154	137	136
45	167	93	81	76	75
55	110	62	56	56	56
65	76	49	43	42	41
75	49	38	35	33	33
85	31	30	30	30	30
90	29	29	30	30	30

Illuminance at Distance



365 ft (111.3 m) 1 fc maximum distance
 Vert. Spread: 16.2°
 Horiz. Spread: 5.9°

Illuminance at Distance



398 ft (121.3 m) 1 fc maximum distance
 Vert. Spread: 16.4°
 Horiz. Spread: 5.9°

Coefficients Of Utilization - Zonal Cavity Method

Effective Floor Cavity Reflectance: 20%

RCC %:	80		70			50			30			10			0
RW %:	70	50	30	0	70	50	30	0	50	30	20	50	30	20	0
RCR: 0	119	119	119	119	116	116	116	100	111	111	111	106	106	106	102
1	116	114	112	110	113	111	110	98	108	106	105	104	103	102	101
2	113	109	107	105	111	108	105	96	105	103	101	102	100	99	99
3	110	106	103	101	108	105	102	95	102	100	98	100	98	97	98
4	108	103	100	98	106	102	99	93	100	98	96	99	97	95	97
5	106	101	98	95	104	100	97	92	99	96	94	97	95	93	96
6	104	99	96	93	103	98	95	91	97	94	93	96	94	92	95
7	102	97	94	92	101	97	94	90	96	93	91	95	92	91	94
8	101	96	93	91	100	95	92	89	94	92	90	94	91	90	93
9	99	94	91	89	99	94	91	88	93	91	89	93	90	89	92
10	98	93	90	88	97	93	90	88	92	90	88	92	90	88	91

Coefficients Of Utilization - Zonal Cavity Method

Effective Floor Cavity Reflectance: 20%

RCC %:	80		70			50			30			10			0
RW %:	70	50	30	0	70	50	30	0	50	30	20	50	30	20	0
RCR: 0	119	119	119	119	116	116	116	100	111	111	111	106	106	106	102
1	116	114	112	110	113	111	110	98	108	106	105	104	103	102	101
2	113	109	107	105	111	108	105	96	105	103	101	102	100	99	99
3	110	106	103	101	108	105	102	95	102	100	98	100	98	97	98
4	108	103	100	98	106	102	99	93	100	98	96	99	97	95	97
5	106	101	98	95	104	100	97	92	99	96	94	97	95	93	96
6	104	99	96	93	103	98	95	91	97	95	93	96	94	92	95
7	102	97	94	92	101	97	94	90	96	93	91	95	93	91	94
8	101	96	93	91	100	95	93	89	95	92	90	94	92	90	93
9	99	95	92	90	99	94	91	89	94	91	89	93	91	89	92
10	98	93	91	89	98	93	90	88	93	90	88	92	90	88	91

Zonal Lumen

Zone	Lumens	% Fixture
0 - 60	5207.2	98.1 %
60 - 90	98.9	1.9 %
0 - 90	5306.1	100.0 %

For lux multiply fc by 10.7

Zonal Lumen

Zone	Lumens	% Fixture
0 - 60	6066.8	98.0 %
60 - 90	123.9	2.0 %
0 - 90	6190.7	100.0 %

For lux multiply fc by 10.7

Specifications

Due to continuous improvements and innovations, specifications may change without notice.

Item	Specification	2700 K* (Half Unit)	4000 K* (Half Unit)
Output	Lumens†	5,306	6,212
	Efficacy (lm / W)	43.3	49.2
	CRI	80	82
Electrical	Input Voltage	100 – 277 VAC, auto-switching, 50 / 60 Hz	
	Power Consumption	250 W maximum at full output, steady state	
	Power Factor	.989 @ 120VAC	
Control		On / Off; digital dimming by 4 connector cable & DE Pro	
Physical	Dimensions (Height x Width x Depth)	20.5 x 28.9 x 4.8 in (521 x 734 x 122 mm)	
	Weight	75 lb (34 kg)	
	Effective Projected Area (EPA)	0.42 m ²	
	Housing	Die-cast aluminium, powder-coated finish	
	Lens	Tempered glass	
	Fixture Connections	10 ft (3.0 m) Leader Cable	
	Temperature Ranges	-40° – 122° F (-40° – 50° C) Operating -4° – 122° F (-20° – 50° C) Startup -40° – 176° F (-40° – 80° C) Storage	
	Fixture Run Lengths	To calculate fixture run lengths and total power consumption for your specific installation, download the Configuration Calculator from www.philipscolorkinetics.com/support/install_tool/	
	Humidity	0 – 95%, non-condensing	
Certification and Safety	Certification	UL / cUL, FCC Class A, CE, PSE	
	Environment	Dry / Damp / Wet Location, IP66	

* Correlated color temperature (CCT) complies with ANSI C78.377-2008 for the chromaticity of solid state lighting products.

† Lumen measurement complies with IES LM-79-08 testing procedures.



Lumen Maintenance

Threshold*	Ambient Temperature	Reported†	Calculated†
L90	@ 25°C	42,300 hrs	84,100 hrs
	@ 50°C	42,300 hrs	48,300 hrs
L80	@ 25°C	42,300 hrs	>100,000 hrs
	@ 50°C	42,300 hrs	>100,000 hrs
L70	@ 25°C	42,300 hrs	>100,000 hrs
	@ 50°C	42,300 hrs	>100,000 hrs

* L_{xx} = xx% lumen maintenance (when light output drops below xx% of initial output). All values are given at B50, or the median value where 50% of the LED population is better than the reported or calculated lumen maintenance measurement.

† Lumen maintenance figures are based on lifetime prediction graphs supplied by LED source manufacturers. Whenever possible, figures use measurements that comply with IES LM-80-08 testing procedures.

In accordance with TM-21-11, Reported values represent the interpolated value based on six times the LM-80-08 total test duration (in hours). Calculated values represent time durations that exceed six times the total test duration.

Fixtures and Accessories

Item	Type	Item Number	Philips 12NC	
eW Reach Powercore gen2 Includes 10 ft (3.0 m) Leader Cable	2700 K	523-000093-00	912400130186	
	4000 K	523-000093-03	912400130213	
3 Conductor Replacement Leader Cable:	10 ft (3.0 m)	UL / cUL	108-000056-03	910503704071
		CE / PSE	108-000056-04	910503704072
	50 ft (15.2 m)	UL / cUL	108-000056-00	910503703138
		CE / PSE	108-000056-01	910503704069
4 Conductor Replacement Leader Cable: (required to digitally dim unit, w/ DE Pro)	10 ft (3.0 m)	UL / cUL	108-000055-03	910503704066
		CE / PSE	108-000055-04	910503704067
	50 ft (15.2m)	UL / cUL	108-000055-00	910503703137
		CE / PSE	108-000055-01	910503704064
Data Enabler Pro (required to digitally dim unit)	3/4 in / 1/2 in NPT (US trade size conduit)	106-000004-00	910503701210	
	PG21 / PG13 (metric size conduit)	106-000004-01	910503701211	
Spread Lens with bezel	8°	120-000068-05	910503700511	
	13°	120-000068-00	910503700506	
	23°	120-000068-01	910503700507	
	40°	120-000068-02	910503700508	
	63°	120-000068-03	910503700509	
	Asymmetric (5° x 17°)	120-000068-04	910503700510	

Use Item Number when ordering in North America.



Philips Color Kinetics
 3 Burlington Woods Drive
 Burlington, Massachusetts 01803 USA
 Tel 888.385.5742
 Tel 617.423.9999
 Fax 617.423.9998
 www.philipscolorkinetics.com
 @ColorKinetics

Copyright © 2009 – 2014 Philips Solid-State Lighting Solutions, Inc. All rights reserved. Chromacore, Chromasic, CK, the CK logo, Color Kinetics, the Color Kinetics logo, ColorBlast, ColorBlaze, ColorBurst, eW Fuse, ColorGraze, ColorPlay, ColorReach, iW Reach, eW Reach, DIMand, EssentialWhite, eW, iColor, iColor Cove, IntelliWhite, iW, iPlayer, Optibin, and Powercore are either registered trademarks or trademarks of Philips Solid-State Lighting Solutions, Inc. in the United States and / or other countries. All other brand or product names are trademarks or registered trademarks of their respective owners. Due to continuous improvements and innovations, specifications may change without notice.

DAS-000136-08 R00 08-14