



maxim

POWERFULLY SIMPLE

 HSLC



The maXim™ lighting consoles introduce a new paradigm in the programming and operation of lighting shows. It is the perfect balance between ease of use, powerful features and all importantly – return on investment.

No other console on the market provides these benefits making the maXim™ the obvious choice for your console.

OVERVIEW

- > Unique PaTPad™ Moving Light Controller with 6 encoders and text displayers.
- > Full Effects engine for instant creation of movements and custom shapes.
- > Internal universal voltage PSU with Brown-Out protection via Mini-UPS.
- > Easy to use 'fader per light' operating system allows the operator to work faster and more efficiently.
- > Up to 90 physical playback faders for instantaneous control of memories in a live situation.
- > Instinctive programming interface with direct operator feedback.
- > Interactive video, user manual and training CD for fast learning of advanced features.
- > Built tough to cope with the rough life of a touring console.



The PaTPad™ allows for rapid programming of even the most complex lights.



Advanced moving light controls are available via dedicated buttons to access Groups, Presets, Palettes and Filters.



The internal mini-UPS and battery backup ensure that programs are never lost if a brown-out or power failure occurs.



FEATURES

The **PaTPad™** allows for rapid programming of even the most complex moving lights in a consistent, easy to use manner.

All parameters are displayed in clear text (no more having to remember that the RedStar gobo is DMX level 17) making it very easy to pre-program memories without the lights being connected.

Most users find the PaTPad™ so easy to use that they are already taking advantage of the **powerful effects generator** and FAN functions within the first 20 minutes of operation. The large number of standard shapes and the ability to create your own custom patterns ensures that the maXim™ takes all the hard work out of programming your show, even if you are only an occasional user.

The PaTPad™ has the ability to record memories with **filtered information**. (such as Pan and Tilt only; all colour parameters; just the colour wheel; or a single parameter such as Zoom, Strobe, Gobo2).

This allows the expert user to create modular building blocks for use in scenes and chases or for live control in an unrehearsed show.

Other advanced moving light controls are available via dedicated buttons for access to **Groups, Presets, Palettes and Filters**.

The **P-Trig** button allows the operator to rehearse a cue live in the editor, rather than having to record it as a cue and then edit it to fine tune the timings. This saves valuable time when programming a show.

Individual parameter timing allows a single memory to include unlimited multi-part timings for LTP parameters. Every moving light can have its own Move and Delay time for every separate parameter. Create stunning multi step sequences in a single static memory, without the need to create a cue list.

Designed to make you an expert. Our Software has been thoroughly designed to remove potential traps for new users, to avoid those dreaded "Oh S**t" moments.

- > **No overriding editor.** If you activate a playback, it takes control, even if some of the lights are in the editor.
- > **Non-Save for control functions.** By default the Lamp On, Lamp Off and Reset commands do not get saved with memories to avoid accidentally saving Cue 17 with a reset of the upstage moving light.

Unreliable power (brown outs and power outages) are common during the early set-up of a period of a show, and

can cause hours of lost programming time. The internal **mini-UPS** provides continuous power through a brown out to ensure that the console continues to operate normally.

If the power drops out completely then the maXim™ uses the UPS battery power to save the entire show to an internal **FLASH disk**, ensuring that you never lose any show data, even in the unlikely event of a software crash.

Four user selectable video windows provide detailed information on all aspects of the console's operation. The dedicated cue list (stack) playback window details the previous, current and next 2 upcoming cues, complete with fade times, and text name for easy reference.

The user interface includes direct access buttons to the two **Sound To Light** filters, **SyncoBEAT™**, Disk operations, Memory naming, Softpatch and operator preferences.

The easiest way to learn the maXim™ console is via the free CD-ROM, interactive video operator manual included with every console. Over 15 dedicated video clips, introduce all the concepts of maXim™ operation.

Visit the comprehensive **maXim Support Forum** to discuss all points of interest, concerns and suggestions with fellow maXim users worldwide. A valuable tool for finding out how to get the most out of the maXim consoles! www.forums.lsclighting.com



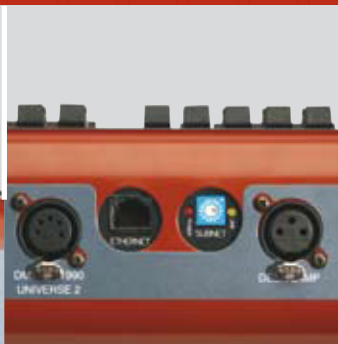
Four user selectable video windows provide detailed information on all aspects of the console's operation.

The user interface includes direct access buttons to the two Sound To Light filters, disk operations, memory naming, Softpatch and operator preferences.

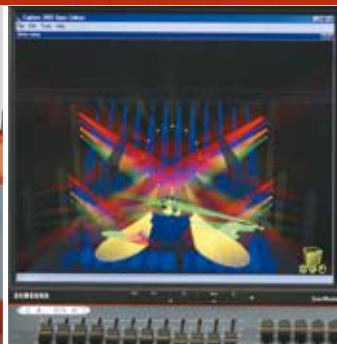
Up to 90 simultaneous playbacks allow instant access to any memory without requiring the use of page buttons.



W-DMX output. Provides 1 or 2 universes of wireless DMX data. Compatible with all W-DMX enabled devices.



Art-Net output. Provides 2 universes of DMX using the Art-Net ethernet protocol. Subnet is controllable and output is via a standard RJ45 connector.



Capture™ Visualisation Software allows the user to program a show offsite. Great for training. Available for all maXim models at time of purchase only.



MAXLITE LED desklamp. A 12V white LED desklamp with 3 levels of dimming, provides subtle illumination with extra long lamp life.

PRODUCT SPECIFICATIONS

| GENERAL FEATURES | | | | |
|---|---|-------------------------------|---------------------------------|-----------------------------------|
| VGA Output | One 15pin Sub-D connector. | | | |
| File Backup | Internal Flash drive + 3.5" Floppy disk. | | | |
| Power Supply | Internal 90-265v AC, Autosensing with mini UPS protection during power brown-outs. | | | |
| Live Scene Time Faders | Two – In time and Out time on separate live faders. | | | |
| Sound To Light | One Line level input with two adjustable filters (with graphical spectrum analyser display). | | | |
| Software Upgradeable | In field (User upgradeable) via disk drive. Software upgrades free for the life of the console. | | | |
| Warranty | 24 months parts and labour on a return to dealer basis. | | | |
| Theatrical Stack Playback | Yes, with Go, Back, Pause and Flash buttons. Up to 500 steps in a stack. | | | |
| Digital Encoders | Six (6) touch encoders for moving light parameters*. One wheel for times and intensity. | | | |
| Tap To The Beat | Proprietary SyncoBEAT™ function allows for easy learning of syncopated timings for chases. | | | |
| Construction | Powder-coated corrosion resistant steel. Polycarbonate rear screened front panel. Dust protected smooth glide faders. | | | |
| CONSOLE MODELS | MP | L - LP | XL - XLP | XXL - XXLP |
| Yellow Faders (lights) | 24 | 36 | 48 | 60 |
| Red Faders (lights/memories) | 24 | 36 | 48 | 60 |
| Blue Faders (memories) | 1 | 6 | 18 | 30 |
| Simultaneous playbacks | 25 | 42 | 66 | 90 |
| Max number of intelligent fixtures * | 48 | 72 | 96 | 120 |
| Maximum number of scenes/chases/stacks-cuelists | 217 | 378 | 594 | 810 |
| Number of Groups * | 24 | 36 | 48 | 60 |
| Number of Presets * | 96 | 144 | 192 | 240 |
| Number of Palettes * | 96 | 144 | 192 | 240 |
| Number of Effects * | 216 | 378 | 594 | 810 |
| Desk lamp outlets (12v) | 1 | 2 | 2 | 2 |
| DMX outputs | 1 (512 slots) | 2 (1024 slots) | 2 (1024 slots) | 2 (1024 slots) |
| Installed Memory (upgradeable to 2MB on all models) | 1 MB | 1 MB | 1.5 MB | 2 MB |
| OPTIONS | | | | |
| PaPad™ moving light control module | N/A | L – Optional LP – Included | XL – Optional XLP – Included | XXL – Optional XXLP – Included |
| Dimensions – H x W x D (mm) | 165 x 656 x 515 | 165 x 797 x 515 | 165 x 1014 x 515 | 165 x 1230 x 515 |
| Weight - Actual | 18.0kg (39.6lbs) | 22.0kg (48.4lbs) | 29.0kg (63.8lbs) | 33.0kg (72.6lbs) |
| W-DMX output | N/A | Optional | Optional | Optional |
| ArtNet output | N/A | Optional | Optional | Optional |

* Requires optional PaPad™ module

maXim

maXim is a trademark of LSC Lighting [Aust] Pty Ltd.



Capture is a trademark of Capture Sweden.

wireless solution

W-DMX is the property of Wireless Solution.

LSC

LSC LIGHTING SYSTEMS (AUST) PTY LTD.

Building 3, 66-74 Micro Circuit, Dandenong South, Victoria, Australia, 3175.

T +61 3 9561 5255 F +61 3 9561 5277 E info@lscighting.com

www.lscighting.com ABN: 21 090 801 675

LSC Lighting Systems Australia reserves the right to change any product specification without notice. The products listed in this brochure are trademarks of LSC Lighting Systems (Aust) Pty Ltd.

Distributed by:

lightmoves

Melbourne
03 9701 2500

Sydney
02 9737 8988

info@lightmoves.com.au www.lightmoves.com.au