



Aleph 2: ET  
LED Light Bar



For more information please contact  
**lightmoves** (03) 9701 2500  
info@lightmoves.com.au  
138-146 Browns Rd, Noble Park VIC 3174

The 'EnTertainment' is the new addition to the Aleph2 light bar range. With on-board mains power supply, this distinct unit will produce clear and crisp light output. The 'ET' is neatly packaged with 6 color mixing LEDs, merging a wide range of colour gamut in its class. Ideal for deep colour or soft pastels.

[www.alephlighting.com](http://www.alephlighting.com)



ENTTEC PTY LTD  
Head office: 17/5 Samantha Court  
Knoxfield VIC 3180 Australia  
Tel: +61 3 9763 5755  
Fax: +61 3 9763 5688

[www.enttec.com](http://www.enttec.com)

ENTTEC AMERICAS  
604A Cornerstone Ct.  
Hillsborough NC 27278 USA  
Tel & Fax: (888) 454-5922

email: [sales@enttec.com](mailto:sales@enttec.com)

**ENTTEC**

# Clear and crisp light output

## ► Features

- Versatile  
Four sizes, four power ratings and a variety of colours
- Greater flexibility of positioning: can be connected together, with one single power source using loop in loop out
- Low maintenance  
Reduces overall operating costs
- Various mounting options and accessories

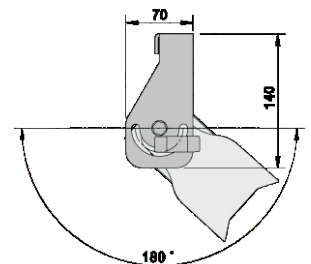
- Control options  
Remote lighting control via industry standard DMX512 protocol and mode selection via RDM standard

Other protocols available with optional accessories from ENTTEC



## ► Specifications

Description	300 ET	600 ET	900 ET	1200 ET	
Housing material	Aluminium	✓	✓	✓	✓
Finish	Black powder coat	✓	✓	✓	✓
LEDs	RGBAWW	✓	✓	✓	✓
Cooling Method	Convection	✓	✓	✓	✓
Operating voltage	110-240 VAC	110-240V	110-240V	110-240V	110-240V
Power load	Full	90W	180W	270W	360W
Beamwidth	25°	✓	✓	✓	✓
Luminous flux	Lumens	3100	6200	9300	12400
Controlling methods	DMX512 / RDM	✓	✓	✓	✓
Cree LED Quantity		30	60	90	120



## ► Applications

- Can be ground, wall or ceiling mounted in any indoor environment
- Concerts, nightclubs, shops, restaurants



For more information please contact

**lightmoves** (03) 9701 2500  
info@lightmoves.com.au

138-146 Browns Rd, Noble Park VIC 3174