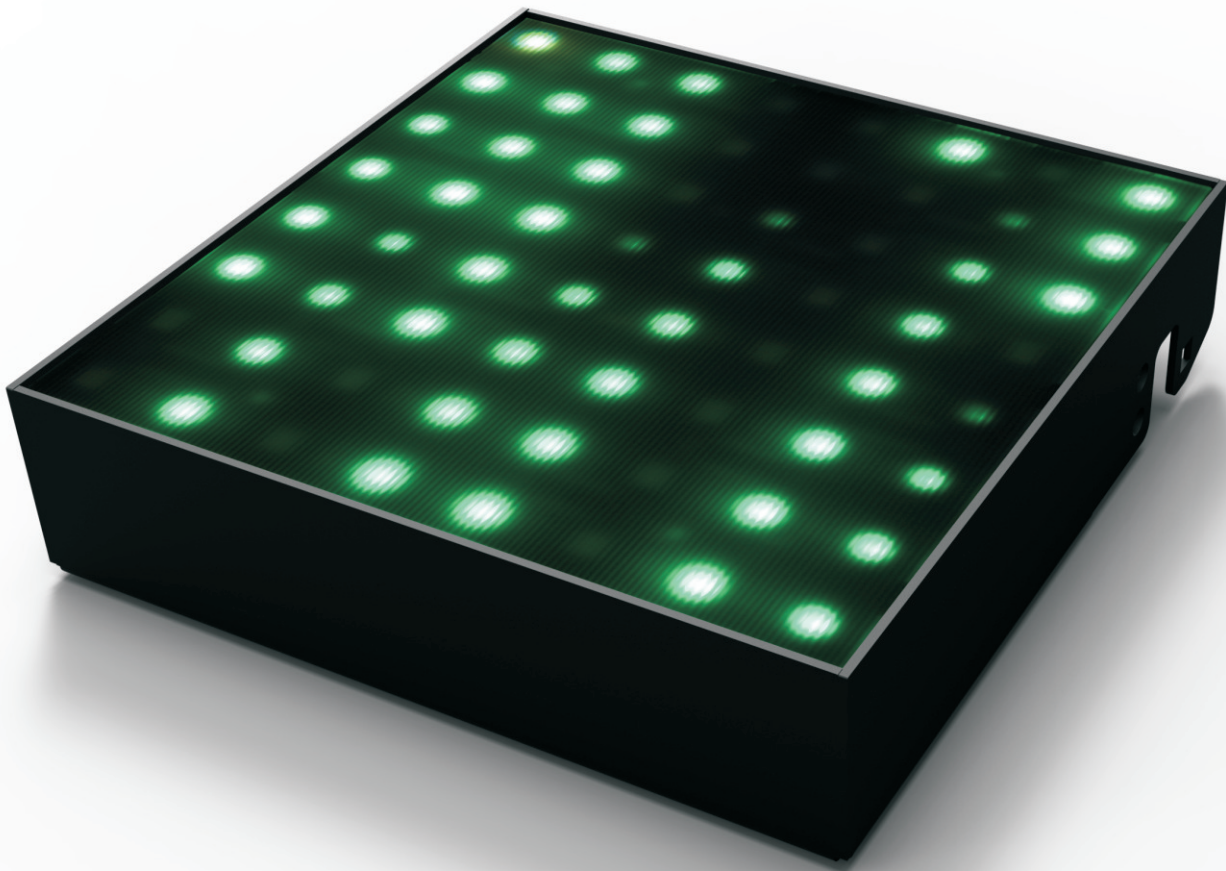




For more information please contact
lightmoves (03) 9701 2500
info@lightmoves.com.au
138-146 Browns Rd, Noble Park VIC 3174

Aleph MATRIX
LED 20mm Pitch Pixel Panel



The Aleph Matrix, 20mm pitch 64 pixel tile designed for indoor applications. Its portability and flexibility with link in-out data and power connections makes setting up quick and easy. Up to 100 tiles per data link for larger screen applications.

www.alephlighting.com



ENTTEC PTY LTD
Head office: 17/5 Samantha Court
Knoxfield VIC 3180 Australia
Tel: +61 3 9763 5755
Fax: +61 3 9763 5688

www.enttec.com

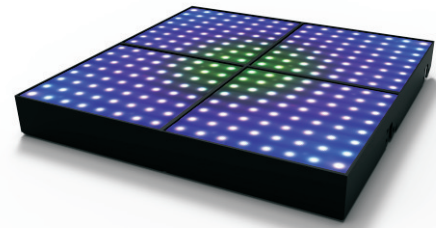
ENTTEC AMERICAS
604A Cornerstone Ct.
Hillsborough NC 27278 USA
Tel & Fax: (888) 454-5922

email: sales@enttec.com


ENTTEC

Aleph MATRIX

Withstand tough environments

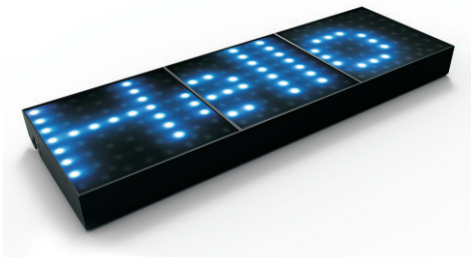


► Features

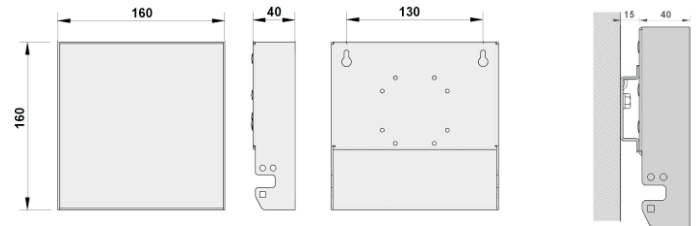
- **Versatile:** great variety color options
- **Greater flexibility of positioning:** can be connected together in any shape to create standard rectangular walls or any configuration
- Lightweight design
- Low power consumption (25W)
- High color definition
- Easy to assemble
- Superior light output
- Simple to commission
- Different diffusers available
- Cost effective
- **Control :** using a dedicated USB interface and CAT5 link, the driver software will accept any Art-Net input source from all major pixel mappers. Perfect partner with  **MADRIX**
MUSIC MAKES THE LIGHT
- **Low maintenance:** fanless, removes the need for regular maintenance

► Specifications

- 20mm led pitch
- 64 RGB pixels per tile
- Daisy chain using AlephM data link
- Daisy chain IEC mains power
- 3.5mm Mullion
- 535g per tile
- Flexible mounting arrangements
- Multi platform pixel driver software
- Various diffusers available



► Sizes & Mounting

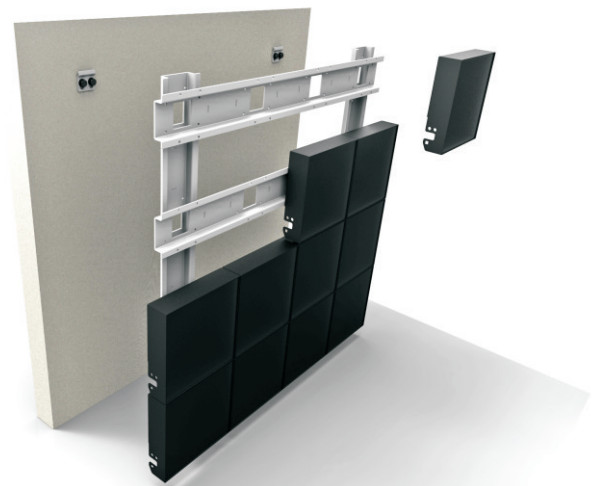


Tile dimensions: L160xH160xW40mm (8'x8'x2')

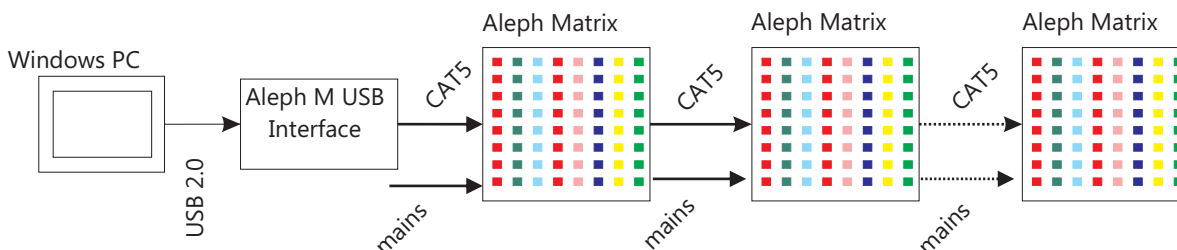
► Applications

Ideal for wall mounted installations or free standing:

- Shops
- Offices
- Restaurants
- Nightclubs
- Shopping centres



► Typical applications



Up to 100 Aleph Matrix panels per USB 2.0 interface

For more information please contact

lightmoves (03) 9701 2500
info@lightmoves.com.au
138-146 Browns Rd, Noble Park VIC 3174