



Date: _____ Type: _____

Firm Name: _____

Project: _____

iColor Player

Compact, affordable, set-and-forget DMX controller

iColor Player is a simple, highly compact, and affordable DMX control solution. iColor Player can control a full DMX universe, and can play one of six configurable effects or a show authored in ColorPlay 3, the timeline-based light show authoring software from Philips Color Kinetics.

iColor Player Effects

Fixed Color — Displays a single color on all fixtures.

Color Wash — Produces a smooth hue transition on all fixtures simultaneously, progressing through the color spectrum.

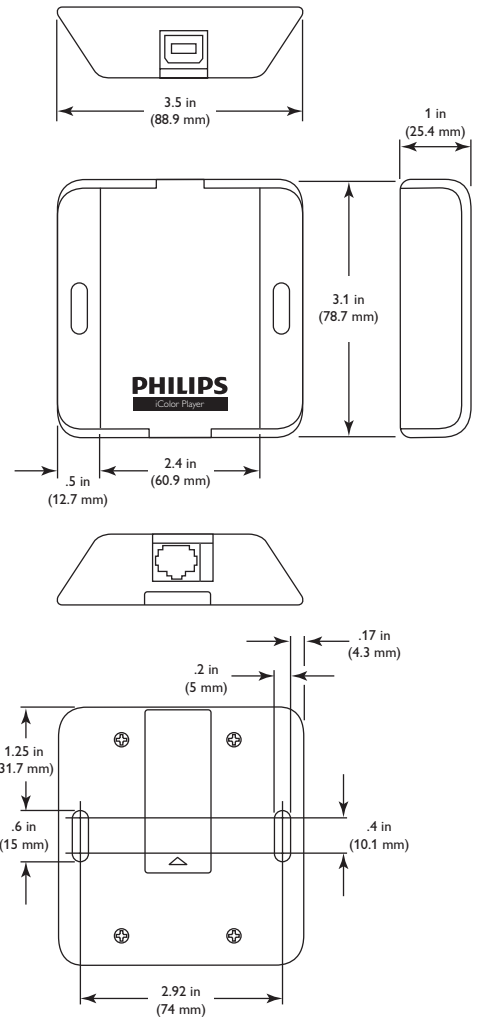
Rainbow Wash — Produces a smooth transition through the color spectrum. Colors appear to follow each other from fixture to fixture.

Chasing — Creates bars of repeated color moving or "chasing" each other in one direction.

Random Color — Displays a sequence of random colors on all fixtures, either fading or snapping from color to color.

Fixed White — Displays white light on all fixtures, with user-specified color temperature.

- Set-and-forget operation — iColor Player starts playing its light show as soon as power is applied. Shows automatically loop, with no triggers or additional configuration required.
- Controls a full DMX universe — iColor Player controls one DMX universe of 512 DMX channels.
- Choose from six configurable effects — Use ColorPlay 3 light show authoring software to select from six effects, adjust effect settings such as color, speed, and brightness, and download to iColor Player.
- Download and play custom ColorPlay 3 light shows — Use the fully customizable effects, multi-track editing, timeline layering, and transition styles in ColorPlay 3 to create a light show for a single DMX universe, then download and play the show using iColor Player.
- Download shows and apply power with a single USB cable — Use the included USB cable to download effects and light shows from a computer running ColorPlay 3, then plug the cable into the included USB power supply to apply power and start show playback.
- Ultra-compact and lightweight — With a weight of only 3.1 oz (87 g) and a small footprint, iColor Player can be installed virtually anywhere.
- Generous, removable show storage — iColor Player includes a removable 2 GB microSD card, generous enough for storing a lengthy or complex ColorPlay 3 light show.



- Simple, consistent operation around the world — Included power adaptors afford consistent operation worldwide. A single CAT 5e or better cable delivers data to fixtures with no additional wiring required.

For detailed product information, please refer to the iColor Player Product Guide at www.philipscolorkinetics.com/ls/controllers/icolorplayer/



Specifications

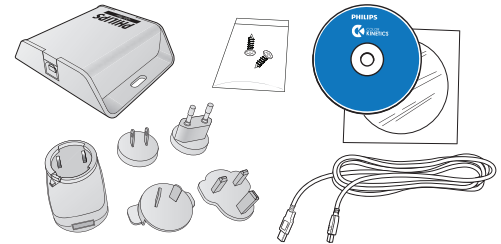
Due to continuous improvements and innovations, specifications may change without notice.

Item	Specification	Details
Electrical	Input Voltage	100 – 240 VAC, 50 / 60 Hz, 5 W output
Control	Computer Interface	USB 2.0
Capability	Supported LED Nodes or Fixtures	512 DMX channels (one DMX universe)
	Data Storage	Removable microSD card (2 GB card included)
	Playback Output	One looping configurable effect or ColorPlay 3 light show
Physical	Dimensions (Width x Depth x Height)	3.5 x 3.1 x 1 in (89 x 79 x 25 mm)
	Weight	3.1 oz (87 g)
	Housing	Black polycarbonate
	Connector / Cable	RJ45 Port, CAT 5e or better data cable (not included)
	Temperature Ranges	14° – 104° F (-10° – 40° C) Operating 14° – 104° F (-10° – 40° C) Startup -40° – 176° F (-40° – 80° C) Storage
	Humidity	0 – 95%, non-condensing
Certification and Safety	Certification	UL / cUL, FCC Class B, CE, CQC, C-Tick
	Environment	Dry Location, IP20



Included in the box

iColor Player
Software CD
6 ft (1.8 m) USB cable
USB power supply
(4) interchangeable USB power adaptors
(2) Phillips pan-head 8-32 x 1/2 in wood screws
Installation Instructions



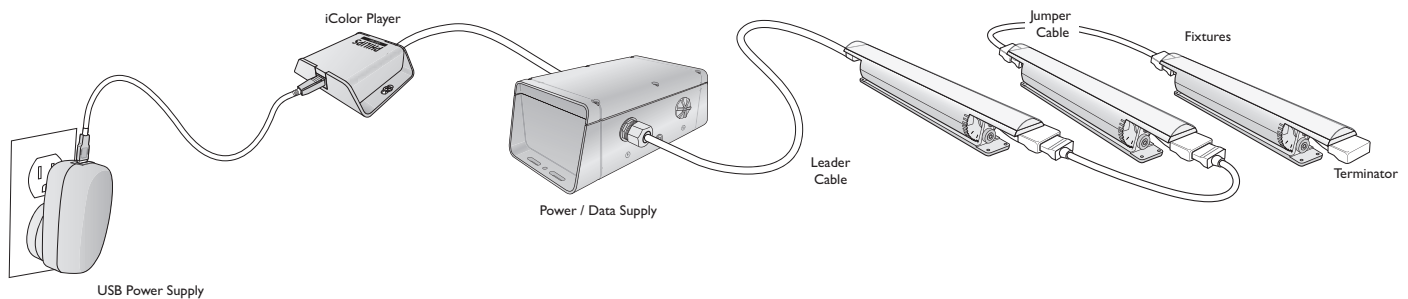
USB power adaptors support consistent operation worldwide.

iColor Player

Item	Item Number	Philips 12NC
iColor Player	103-000027-00	910503702003

Use Item Number when ordering in North America.

Typical iColor Player installation



Philips Color Kinetics
3 Burlington Woods Drive
Burlington, Massachusetts 01803 USA
Tel 888.385.5742
Tel 617.423.9999
Fax 617.423.9998
www.philipscolorkinetics.com

Copyright © 2011 - 2012 Philips Solid-State Lighting Solutions, Inc. All rights reserved. Chromacore, Chromasic, CK, the CK logo, Color Kinetics, the Color Kinetics logo, ColorBlast, ColorBlaze, ColorBurst, eW Fuse, ColorGraze, ColorPlay, ColorReach, iW Reach, eW Reach, DIMand, EssentialWhite, eW, iColor, iColor Cove, IntelliWhite, iW, iPlayer, Optibin, and Powercore are either registered trademarks or trademarks of Philips Solid-State Lighting Solutions, Inc. in the United States and / or other countries. All other brand or product names are trademarks or registered trademarks of their respective owners. Due to continuous improvements and innovations, specifications may change without notice. DAS-000089-01 R02 07-12