



Date: _____ Type: _____

Firm Name: _____

Project: _____

eW Reach Compact Powercore

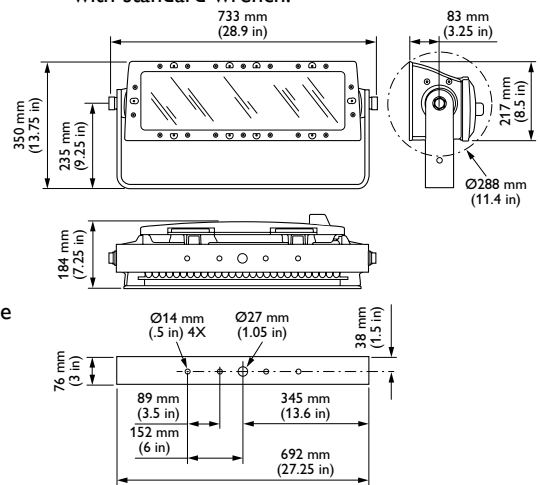
5° native (no spread lens), UL / CE

Premium long-throw compact exterior LED floodlight with solid white light

eW Reach Compact Powercore combines all the benefits of LED-based lighting in a compact fixture specifically designed for large-scale installations calling for high-quality white light, including commercial skyscrapers, casinos, large retail exteriors, bridges, piers, public monuments, and themed attractions. With levels of light output and projection never before achieved in a compact LED lighting fixture, eW Reach Compact Powercore delivers intense, energy-efficient output at a reasonable price, opening up new possibilities for exterior illumination. Standard configurations include a warm 2700 K and a cool 4000 K, with six additional color temperatures available, ranging from 3000 K to 6500 K.

- Intense light output — eW Reach Compact Powercore outputs thousands of lumens and throws light hundreds of feet, delivering legitimate LED-based illumination of large-scale structures and objects in a compact, fully-sealed housing.
- Integrates Powercore technology — Fixtures rapidly, efficiently, and accurately process power directly from line voltage, eliminating the need for additional, external power supplies.
- Versatile optics — Exchangeable spread lenses of 8°, 13°, 23°, 40°, 63°, and an asymmetric 5° x 17° support a variety of photometric distributions for a multitude of applications, including spotlighting, wall grazing, and asymmetric wall washing. Bezel and gasket ship with spread lenses for easy user installation.

- Rich, uniform white light — High-performance LEDs offer rich, uniform white light at significantly less cost for installation, operation, and maintenance than traditional light sources.
- Simple fixture positioning — Rugged, slim-profile mounting bracket allows flexible positioning and fixture rotation through a full 360°. Side locking bolts reliably secure fixture with standard wrench.



- Universal power input range — Accepts a universal power input range of 100 – 277 VAC, allowing long fixture runs and consistent installation in any location around the world.

For detailed product information, please refer to the eW Reach Compact Powercore Product Guide at www.philipscolorkinetics.com/l/essentialwhite/ewreachcompact/

PHILIPS

Photometrics / eW Reach Compact Powercore, 5° native (no spread lens)

2700 K

Lumens	5956
Efficacy	48.7 lm / W

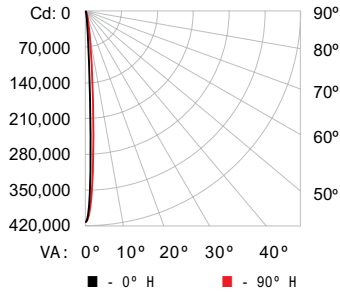


4000 K

Lumens	6936
Efficacy	56.5 lm / W



Polair Candela Distribution



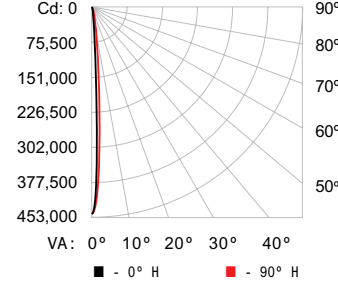
	0	25	45	70	90
0	419719	419719	419719	419719	419719
5	68191	68845	65261	54542	49041
15	688	686	685	678	687
25	197	196	210	220	237
35	108	104	110	103	145
45	66	62	63	63	65
55	51	69	49	53	51
65	47	44	42	44	41
75	37	32	32	31	30
85	28	28	28	28	28
90	0	0	0	0	28

Illuminance at Distance

Center Beam fc	Beam Width
4 ft: 26,232 fc	0.4 ft 0.4 ft
8 ft: 6,558 fc	0.9 ft 0.8 ft
12 ft: 2,915 fc	1.3 ft 1.2 ft
16 ft: 1,640 fc	1.7 ft 1.6 ft
20 ft: 1,049 fc	2.1 ft 2.0 ft
24 ft: 729 fc	2.6 ft 2.4 ft

649 ft (197.8 m)
1 fc maximum distance
Vert. Spread: 6.1°
Horiz. Spread: 5.8°

Polair Candela Distribution



	0	25	45	70	90
0	452226	452226	452226	452226	452226
5	75082	68856	64191	59455	55147
15	775	759	753	747	742
25	224	224	238	246	270
35	119	117	124	117	167
45	76	72	72	74	75
55	60	79	56	62	58
65	55	51	49	50	47
75	43	37	37	37	36
85	33	33	33	33	33
90	0	3	6	8	32

Illuminance at Distance

Center Beam fc	Beam Width
4 ft: 28,264 fc	0.5 ft 0.4 ft
8 ft: 7,066 fc	0.9 ft 0.8 ft
12 ft: 3,141 fc	1.4 ft 1.3 ft
16 ft: 1,767 fc	1.9 ft 1.7 ft
20 ft: 1131 fc	2.3 ft 2.1 ft
24 ft: 785 fc	2.7 ft 2.5 ft

672 ft (204.8 m)
1 fc maximum distance
Vert. Spread: 6.5°
Horiz. Spread: 6.0°

Coefficients Of Utilization - Zonal Cavity Method

Effective Floor Cavity Reflectance: 20%

RCC %:	80		70		50		30		10		0	
RW %:	70	50	30	0	70	50	30	0	70	50	30	0
0	119	119	119	119	116	116	116	100	111	111	111	100
1	116	114	113	111	114	112	111	99	108	107	106	98
2	113	111	108	106	111	109	107	98	106	104	103	97
3	111	108	105	103	110	106	104	97	104	102	101	99
4	109	106	103	101	108	105	102	96	103	101	99	96
5	108	104	101	99	107	103	100	96	102	99	98	95
6	107	102	100	98	106	102	99	95	101	98	97	95
7	105	101	99	97	104	101	98	95	100	98	96	94
8	104	100	98	96	104	100	97	95	99	97	95	94
9	103	99	97	95	103	99	97	94	98	96	95	94
10	103	99	96	95	102	98	96	94	98	96	94	94

Coefficients Of Utilization - Zonal Cavity Method

Effective Floor Cavity Reflectance: 20%

RCC %:	80		70		50		30		10		0	
RW %:	70	50	30	0	70	50	30	0	70	50	30	0
0	119	119	119	119	116	116	116	100	111	111	111	100
1	116	114	113	111	114	112	111	99	108	107	106	98
2	113	111	108	106	111	109	107	98	106	104	103	97
3	111	108	105	103	110	107	104	97	104	102	101	99
4	109	106	103	101	108	105	102	96	103	101	99	96
5	108	104	101	99	107	103	100	96	102	99	98	95
6	107	102	100	98	106	102	99	95	101	98	97	95
7	105	101	99	97	105	101	98	95	100	98	96	95
8	104	100	98	96	104	100	97	95	99	97	95	94
9	103	99	97	95	103	99	97	94	98	96	95	94
10	103	99	96	95	102	98	96	94	98	96	94	94

Zonal Lumen

Zone	Lumens	% Fixture
0 - 60	5850.1	98.2 %
60 - 90	106.1	1.8 %
0 - 90	5956.2	100.0 %

For lux multiply fc by 10.7

Zonal Lumen

Zone	Lumens	% Fixture
0 - 60	6812.8	98.2 %
60 - 90	123.2	1.8 %
0 - 90	6936.0	100.0 %

For lux multiply fc by 10.7

Specifications

Due to continuous improvements and innovations, specifications may change without notice.

Item	Specification	2700 K*	4000 K*
Output	Lumens†	5956	6936
	Efficacy (lm / W)	48.7	56.5
	CRI	80	82
Electrical	Input Voltage	100 – 277 VAC, auto-switching, 50 / 60 Hz	
	Power Consumption	125 W	
	Power Factor	.967 @ 120 VAC (2700 K) .961 @ 120 VAC (4000 K)	
Control		On / Off, digital dimming by 4 connector cable & DE Pro	
Physical	Dimensions (Height x Width x Depth)	8.5 x 28.9 x 7.7 in (217 x 733 x 196 mm)	
	Weight	51 lb (23 kg)	
	Effective Projected Area (EPA)	0.186 m ²	
	Housing	Die-cast aluminium, powder-coated finish	
	Lens	Tempered glass	
	Fixture Connections	Integral male / female waterproof connector, 10 ft (3.0 m) power cable	
	Temperature Ranges	-40° – 122° F (-40° – 50° C) Operating -4° – 122° F (-20° – 50° C) Startup -40° – 176° F (-40° – 80° C) Storage	
	Humidity	0 – 95%, non-condensing	
Certification and Safety	Certification	UL / cUL, FCC Class A, CE, PSE	
	Environment	Dry / Damp / Wet Location, IP66	

* Correlated color temperature (CCT) complies with ANSI C78.377-2008 for the chromaticity of solid state lighting products.

† Lumen measurement complies with IES LM-79-08 testing procedures.



Lumen Maintenance

Threshold*	Ambient Temperature	Reported†	Calculated†
L90	@ 25°C	42,400 hrs	42,400 hrs
	@ 50°C	42,400 hrs	42,400 hrs
L80	@ 25°C	>100,000 hrs	>100,000 hrs
	@ 50°C	>100,000 hrs	>100,000 hrs
L70	@ 25°C	>100,000 hrs	>100,000 hrs
	@ 50°C	>100,000 hrs	>100,000 hrs

* L_{xx} = xx% lumen maintenance (when light output drops below xx% of initial output). All values are given at B50, or the median value where 50% of the LED population is better than the reported or calculated lumen maintenance measurement.

† Lumen maintenance figures are based on lifetime prediction graphs supplied by LED source manufacturers. Whenever possible, figures use measurements that comply with IES LM-80-08 testing procedures.

In accordance with TM-21-11, Reported values represent the interpolated value based on six times the LM-80-08 total test duration (in hours). Calculated values represent time durations that exceed six times the total test duration.

Fixtures and Accessories

Item	Type	Item Number	Philips 12NC	
eW Reach Compact Powercore <i>Includes 10 ft (3.0 m) Leader Cable</i>	2700K	UL / cUL	523-000095-00	910503703281
		CE / PSE	523-000095-06	912400130228
	4000K	UL / cUL	523-000095-03	912400130225
		CE / PSE	523-000095-09	912400130231
3 Conductor Replacement Leader Cable:	10 ft (3.0 m)	UL / cUL	108-000056-03	910503704071
		CE / PSE	108-000056-04	910503704072
	50 ft (15.2 m)	UL / cUL	108-000056-00	910503703138
		CE / PSE	108-000056-01	910503704069
4 Conductor Replacement Leader Cable: (required to digitally dim unit, w/ DE Pro)	10 ft (3.0 m)	UL / cUL	108-000055-03	910503704066
		CE / PSE	108-000055-04	910503704067
	50 ft (15.2m)	UL / cUL	108-000055-00	910503703137
		CE / PSE	108-000055-01	910503704064
Data Enabler Pro (required to digitally dim unit)	3/4 in / 1/2 in NPT (US trade size conduit)	106-000004-00	910503701210	
	PG21 / PG13 (metric size conduit)	106-000004-01	910503701211	
Spread Lens with bezel	8°	120-000068-05	910503700511	
	13°	120-000068-00	910503700506	
	23°	120-000068-01	910503700507	
	40°	120-000068-02	910503700508	
	63°	120-000068-03	910503700509	
	Asymmetric (5° x 17°)	120-000068-04	910503700510	

Use Item Number when ordering in North America.



Philips Color Kinetics
 3 Burlington Woods Drive
 Burlington, Massachusetts 01803 USA
 Tel 888.385.5742
 Tel 617.423.9999
 Fax 617.423.9998
www.philipscolorkinetics.com
 @ColorKinetics

Copyright © 2012 – 2104 Philips Solid-State Lighting Solutions, Inc. All rights reserved.
 Chromacore, Chromasic, CK, the CK logo, Color Kinetics, the Color Kinetics logo, ColorBlast, ColorBlaze, ColorBurst, eW Fuse, ColorGraze, ColorPlay, ColorReach, iW Reach, eW Reach, DIMand, EssentialWhite, eW, iColor, iColor Cove, IntelliWhite, iW, iPlayer, Optibin, and Powercore are either registered trademarks or trademarks of Philips Solid-State Lighting Solutions, Inc. in the United States and / or other countries. All other brand or product names are trademarks or registered trademarks of their respective owners. Due to continuous improvements and innovations, specifications may change without notice. DAS-000140-01 R00 08-14