

Installation and Set-Up Guide



The Helvar uSee Web Browser User Interface is a hardware and software platform that when used in conjunction with a Helvar Router system, allows the user to view the system, select scenes, programme new scene levels, apply alternate scene and group names, and monitor energy use.

The uSee interface provides both wired and wireless connectivity to all popular web browsing devices, such as an iPad, and provides an easy to use, intuitive graphical means of control of the lighting system.

1. Mount to wall

Mounting, Environmental and Clearance Requirements

Mounting

- Mount the unit on a flat surface.
- Use No.8 or No. 10 screws with a head diameter between 6 mm and 9 mm.
- Use wall plugs if necessary.
- Refer to the 'Mounting Dimensions' diagram below.

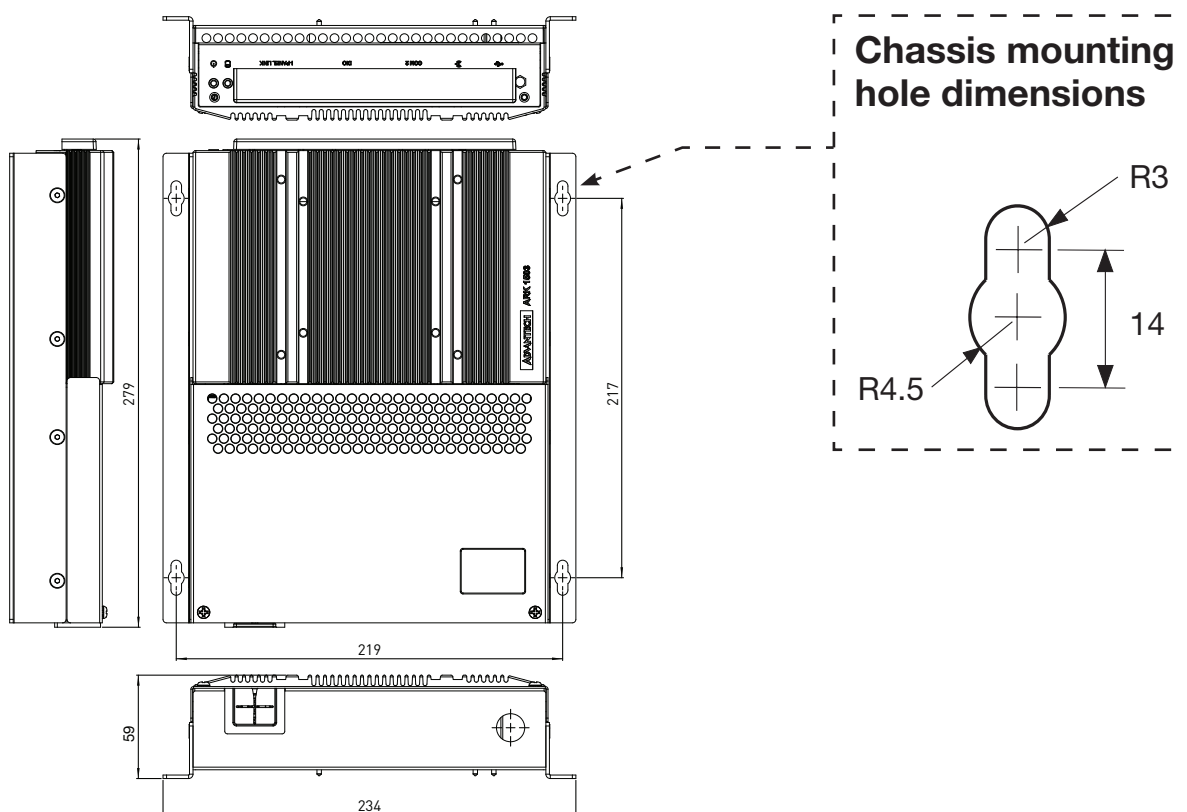
Environment

- The ambient temperature must be between 0°C and 40°C.
- Air humidity must be between 0% and 90% (non-condensing).
- The area must be adequately ventilated.
- Do NOT install this product in a damp location.

Clearance

- Leave sufficient clearance (at least 100 mm) to allow cables to be connected.

Mounting dimensions

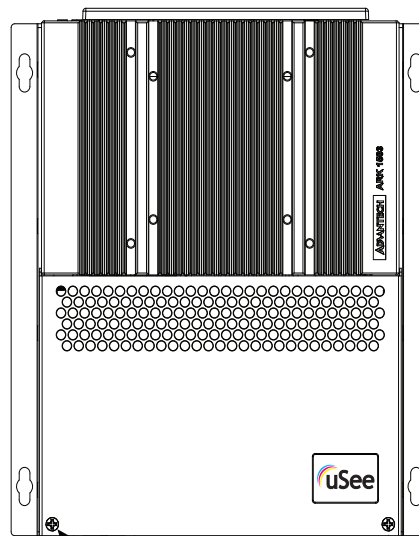


2. Electrical installation

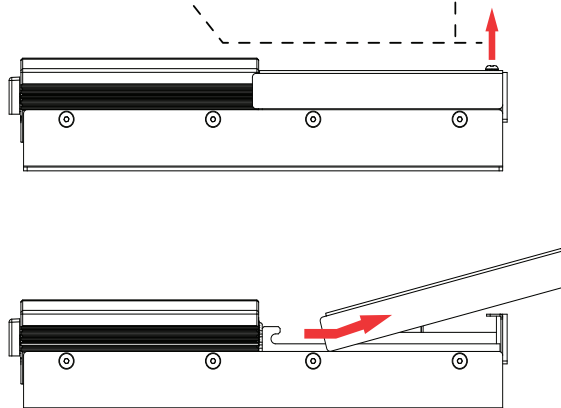
WARNING: BEFORE COMMENCING ANY ELECTRICAL WORK, ISOLATE THE ELECTRICITY SUPPLY AT THE MAIN DISTRIBUTION BOARD.

2.1. Remove the cover

1. Remove the two screws securing the cover.

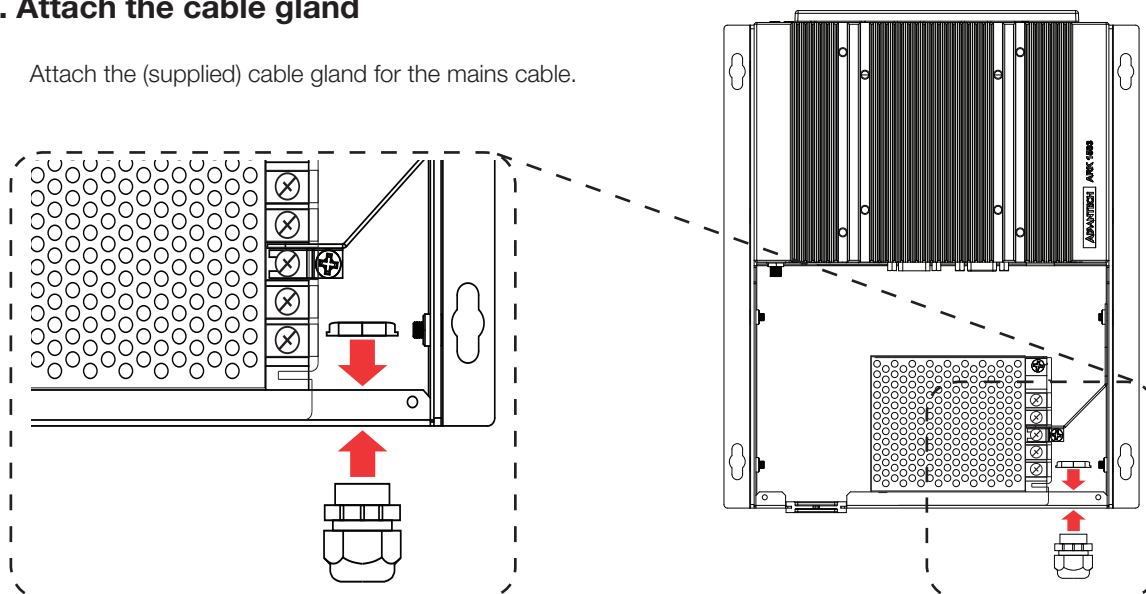


2. Tilt the cover and slide it backwards



2.2. Attach the cable gland

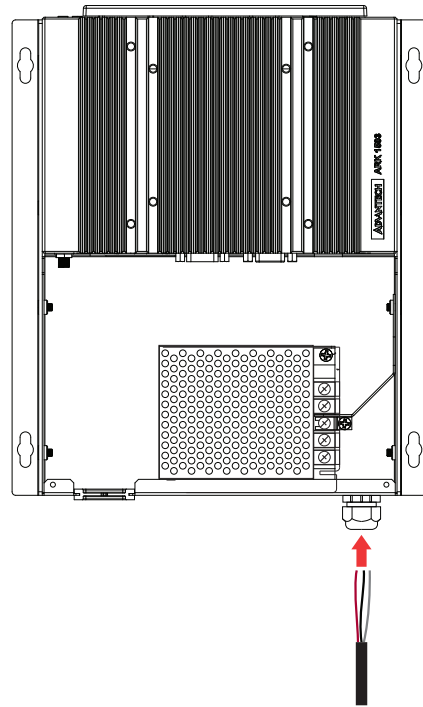
1. Attach the (supplied) cable gland for the mains cable.



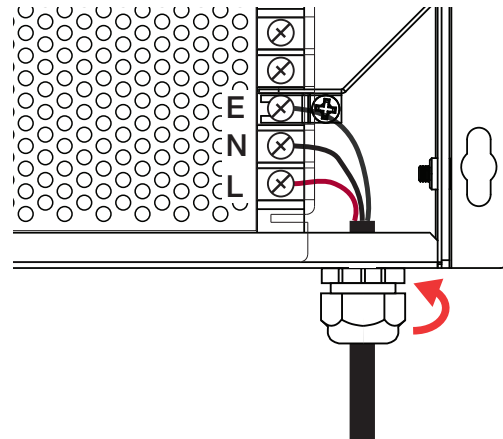
WARNING: THE SUPPLY INPUT EARTH **MUST** BE CONNECTED.

2.3. Connect the mains supply

1. Pass the wire through the cable gland
2. Strip the cable



3. Connect the L, N and Earth as shown



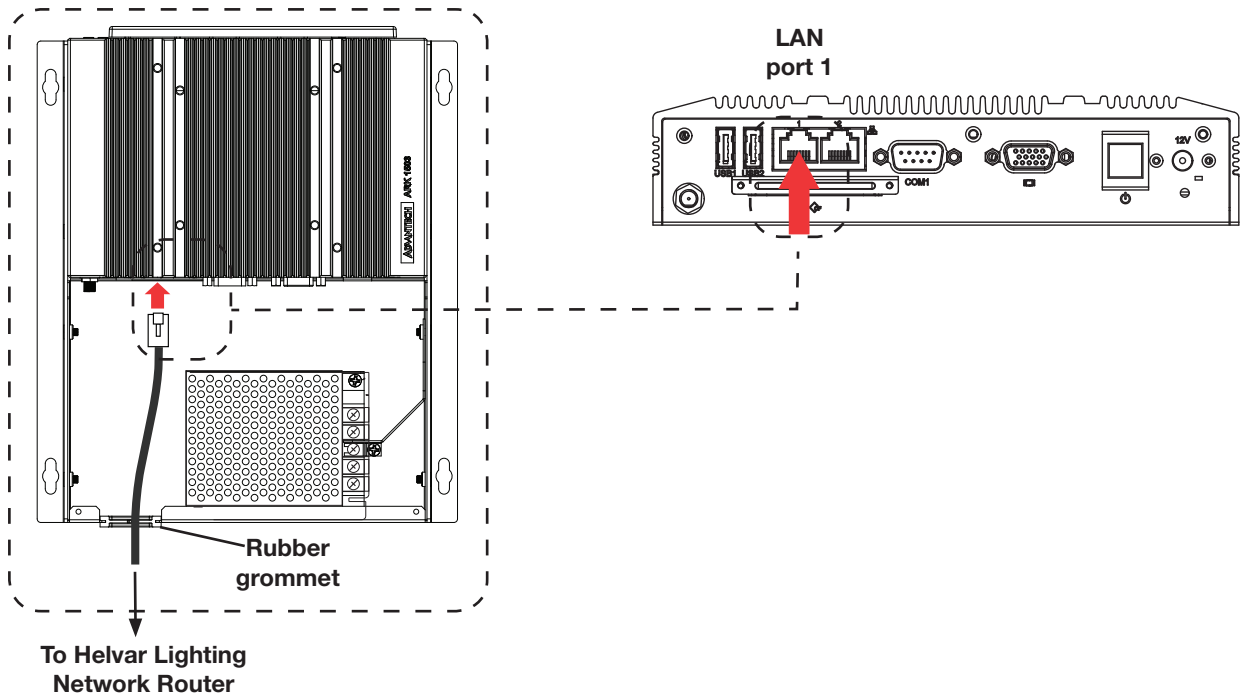
3. Pull back any excess cable through the grip

4. Tighten the cable grip to retain the wire

3. Connection to Lighting Network

3.1. Connect the Helvar 'Lighting Router' network

1. Plug the Ethernet cable from the Helvar 'Lighting Router' network into 'Port 1' on the uSee unit
2. Push the cable into the rubber grommet as it exits the enclosure
3. Leave sufficient clearance around the uSee unit to give enough space to ensure the cables are not crushed or bent in a manner that may affect their performance.



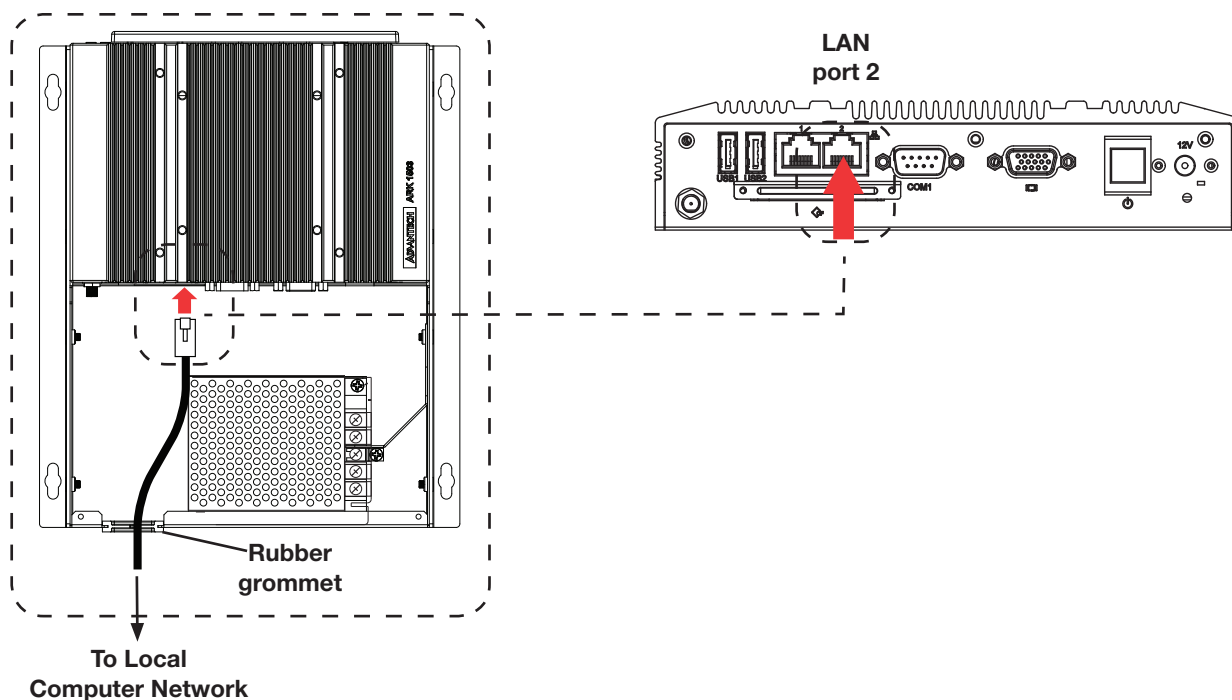
4. Connecting to uSee from a browser

To access and control the uSee unit, connect using a web browser on an external device, such as a laptop or tablet PC. You can connect either via:

- a direct wired Ethernet network connection or
- a wireless LAN connection (802.11b/g)

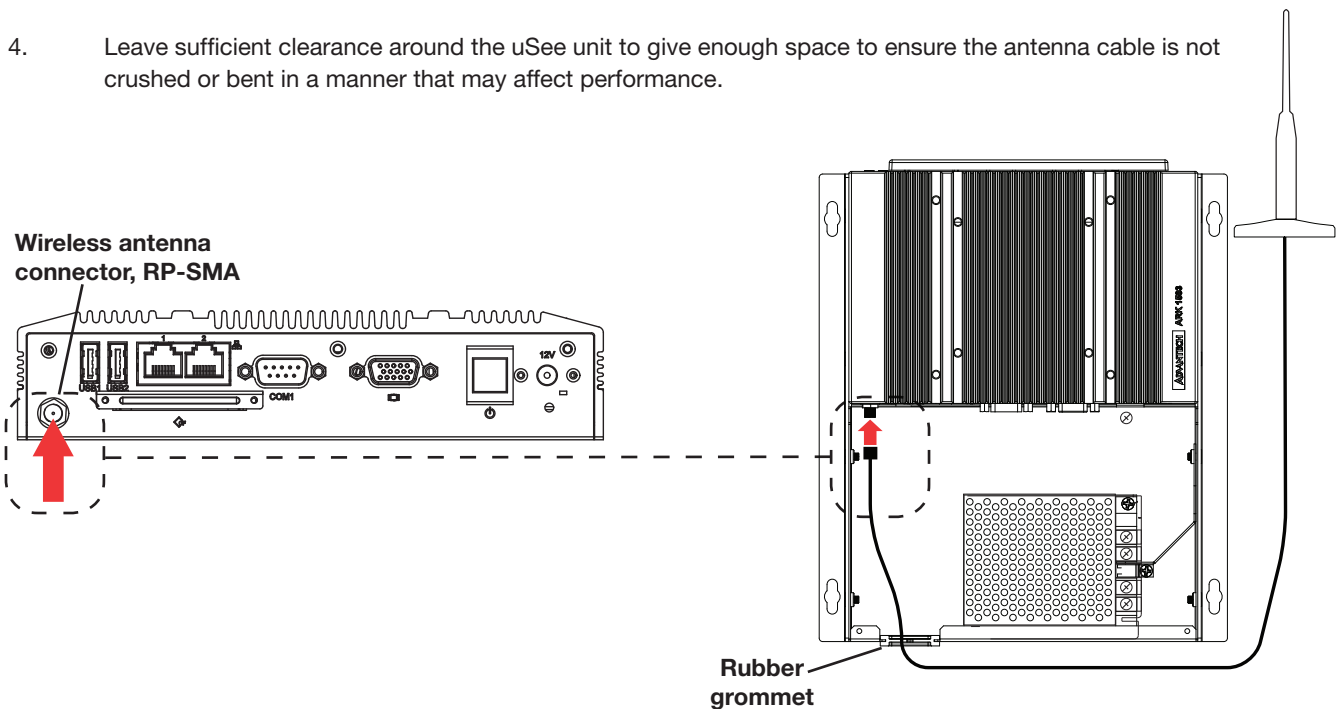
4.1. Connecting to a direct wired Ethernet network (optional)

1. Plug the Ethernet cable from the local computer network in to 'LAN Port 2' on the uSee unit.
2. Push the cable into the rubber grommet as it exits the enclosure.
3. Leave sufficient clearance around the uSee unit to give enough space to ensure the cables are not crushed or bent in a manner that may affect their performance.



4.2. Connecting the external antenna for wireless networking (recommended)

1. Screw the external antenna cable in to the socket of the uSee unit
2. Push the cable into the rubber grommet as it exits the enclosure
3. Screw the antenna into the base. The base is magnetic for secure mounting on ferrous materials
4. Leave sufficient clearance around the uSee unit to give enough space to ensure the antenna cable is not crushed or bent in a manner that may affect performance.



Siting the antenna: recommendations

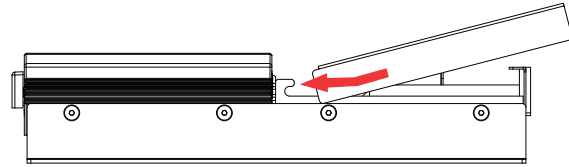
These recommendations will help in optimizing the performance and reliability of the wireless connection:

1. Set up your router as close as possible to the centre of the area you want to provide wireless networking for.
2. Keep the antenna away from objects that cause wireless interference. Large metal objects, fluorescent or halogen lights, microwaves, cordless phones and their base stations, and wall ducting or vents can block or interfere with wireless signals.
3. Place the antenna in an elevated location.
4. Point the top of the antenna upwards if it is positioned below the coverage area. Point the top of the antenna down if it is positioned above the coverage area, e.g., if it is wall-mounted near the ceiling.

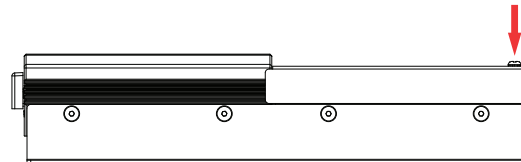
5. Replace cover and switch unit on

5.1. Replace the cover

1. Tilt the cover so the front pegs locate in to the slots and slide it forwards.



2. Push the bottom of the cover downwards and secure it with the two retaining screws.



5.2. Switch on mains power supply and check operation

1. Switch on the mains power supply.
2. Check that 12 V power is being supplied: the PWR and HDD LEDs at the top of the unit should be on (PWR) and flashing (HDD).

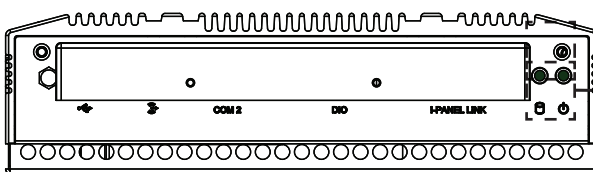
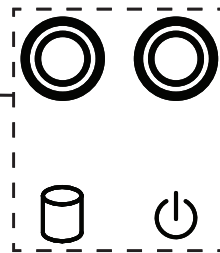


Diagram: HDD and PWR indicators



With the unit powered on, you can now configure the uSee unit: see the next section for details.

6. Configuring the uSee Unit

The uSee unit is best configured using wireless access and a web browser.

If a wireless connection is not possible, use the 'Direct connection' option.

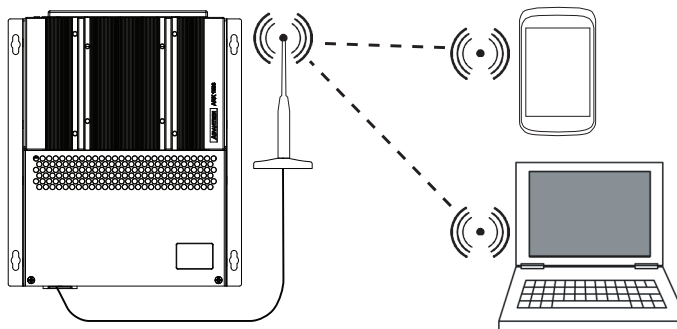
Note 1: It is possible to connect to the uSee unit using a standard browser, running on many different operating systems.

Note 2: Minimum display screen resolution is 1024 x 768.

Web browser, wireless Ethernet

Connect via wireless Ethernet to the uSee unit using a PC, tablet PC or smartphone (any device running a web browser).

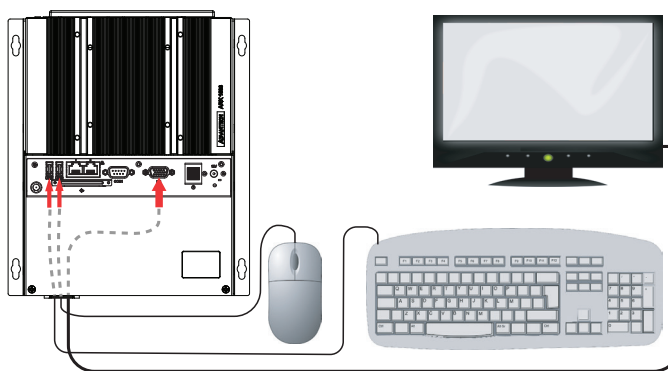
See section 6.1 for configuration instructions.



Direct control (keyboard, mouse, monitor)

Operate the uSee unit directly, using a keyboard, mouse and monitor/display.

See section 6.2 for configuration instructions.

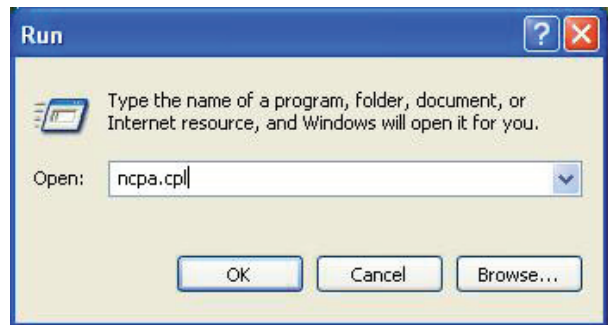
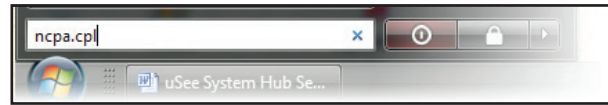


6.1. Initial access to the uSee unit: Wireless Ethernet

6.1.1. Open 'Network Connections' window

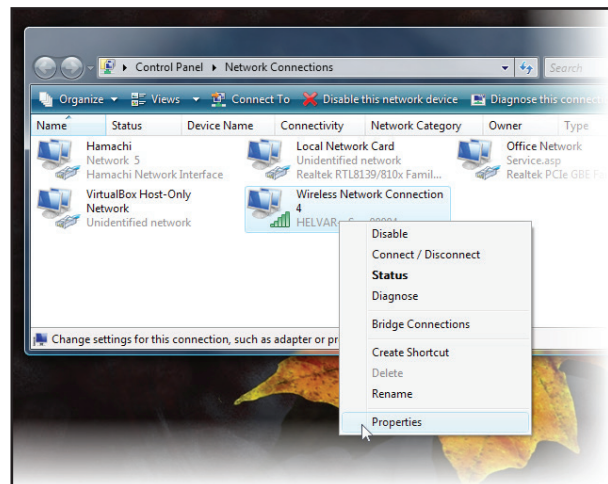
1. Click the Windows logo.
2. Access 'ncpa.cpl' from the Windows Search box.
(On Windows XP, use the Start > Run... dialogue box)

The Network connections window can also be accessed via the Windows Control Panel.



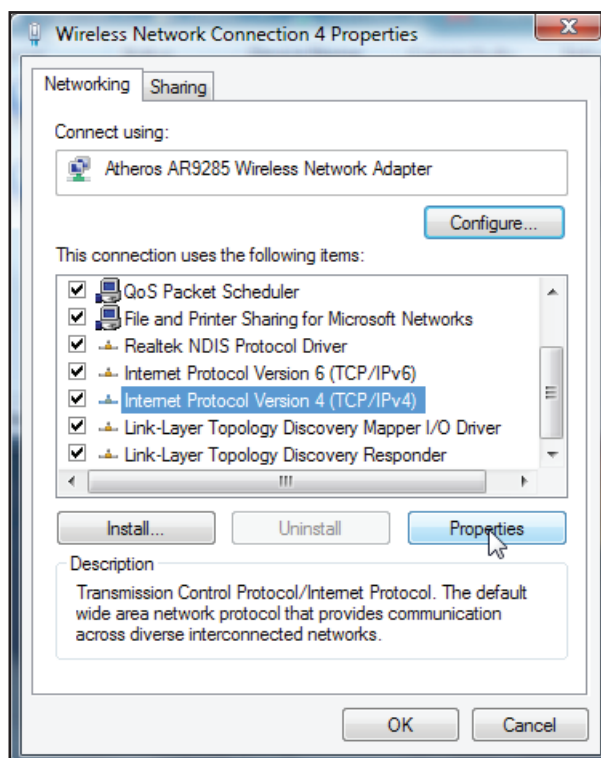
6.1.2. Access Wireless Network Adapter properties

1. Right-click the wireless network adapter
2. Select 'Properties'



6.1.3. Access Internet Protocol properties

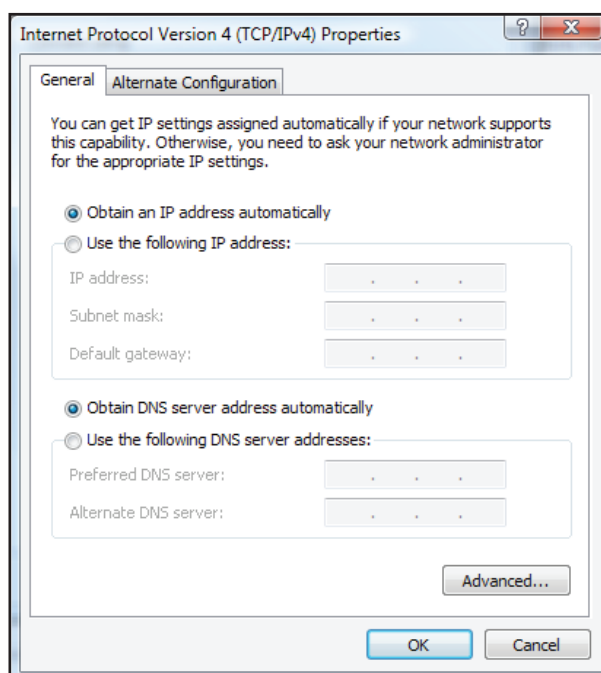
1. Select the 'Internet Protocol' item. If more than one is listed, select the IPv4 item.



2. Click the 'Properties' button: the 'Internet Protocol (TCP/IP) Properties' window opens.

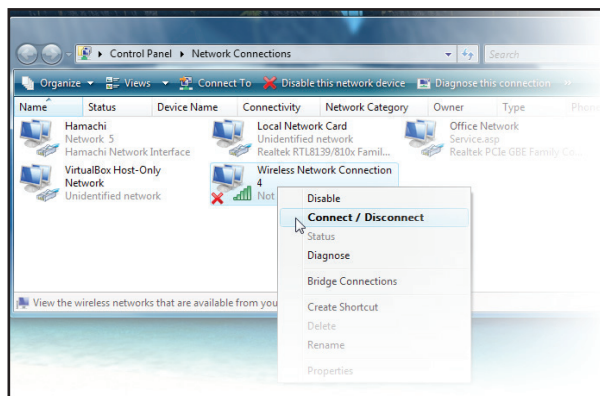
6.1.4. Set the PC's IP address and subnet mask

1. Click 'Obtain an IP address automatically'
2. Click 'Obtain DNS server address automatically'
3. Click 'OK'
4. Click 'Close' in the 'Wireless Network Connections Properties' window



6.1.5. Connect the PC to the wireless network

1. In the 'Network Connections' window, right-click the wireless network adapter.



2. Select 'Connect/Disconnect'

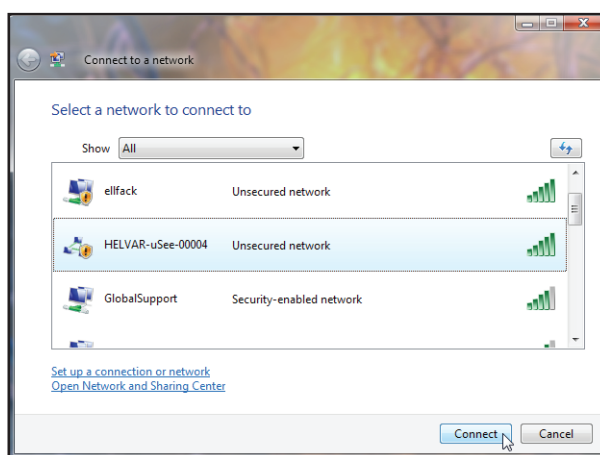
3. Select the uSee unit's wireless network.

The network SSID will be:

HELVARuSeeXXXXX

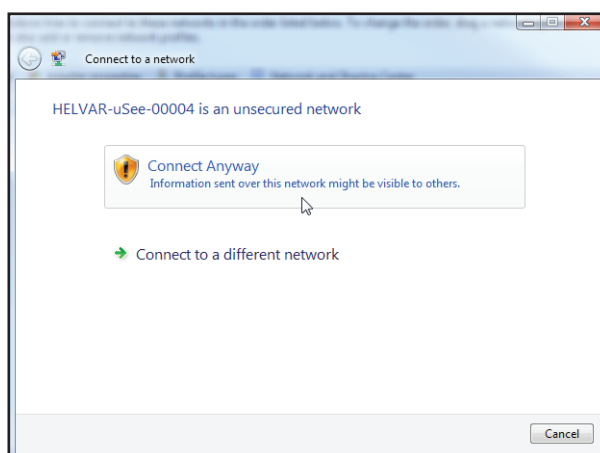
where XXXXX is the uSee unit's serial number,

The serial number is printed on a label on the uSee.



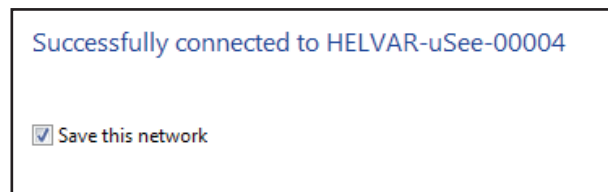
4. Click 'Connect'

5. Click 'Connect Anyway'
(when warned that information on this network may be visible to other people)



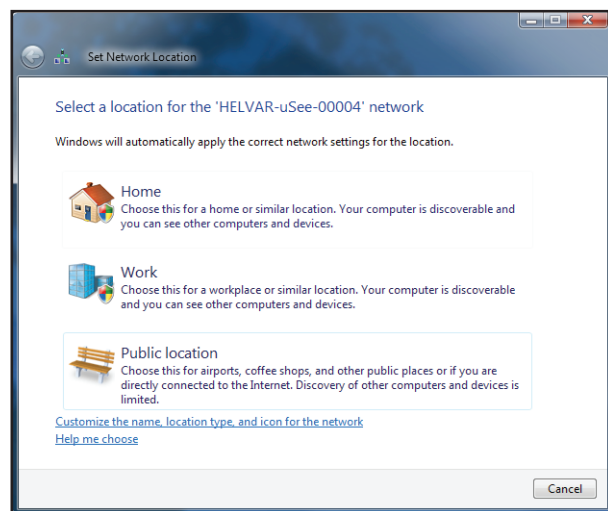
6.1.6. Save the network settings to your PC

1. When prompted, choose the 'Save this network' option



6.1.7. Set network location as 'Public location'

1. When prompted, choose the 'Public location' option.
2. Go to Section 7



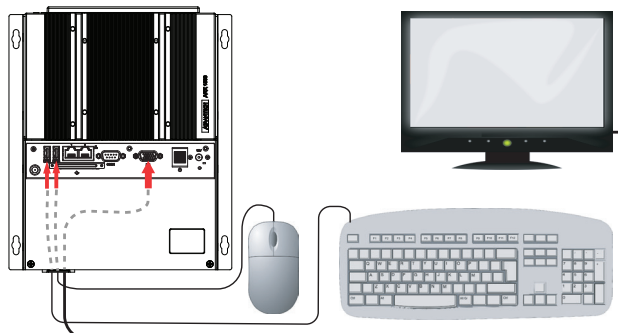
6.2. Initial access to the uSee unit: Direct Control

NOTE: THIS ACCESS METHOD IS ONLY REQUIRED WHEN THERE IS NO WIRELESS CONNECTION AVAILABLE.

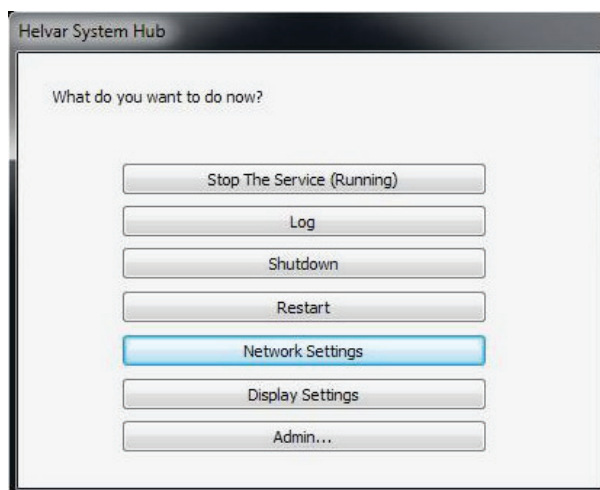
6.2.1. Connect a USB mouse and USB keyboard to the uSee unit.

6.2.2. Connect a monitor/display to the uSee unit.

The uSee unit video port is VGA: you may need to use a DVI to VGA converter.



6.2.3. With the uSee unit powered on, you should see the uSee unit initial set-up screen

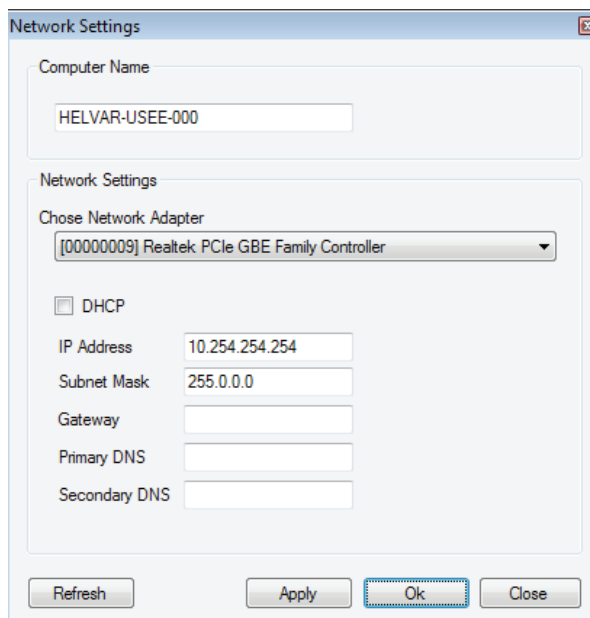


6.2.4. Configure the uSee unit's network settings

Consult the network administrator for IP settings compatible with your network.

- 1a. Click on 'Network Settings'
- 1b. Enter the required IP address of the uSee unit.
- 1c. Enter subnet mask, Gateway, and DNS values.
- 1d. Click 'Apply', and then 'Close'

Discovery of a workgroup and any further setup of the uSee unit should be managed via the Configuration section of its web interface (see next section)



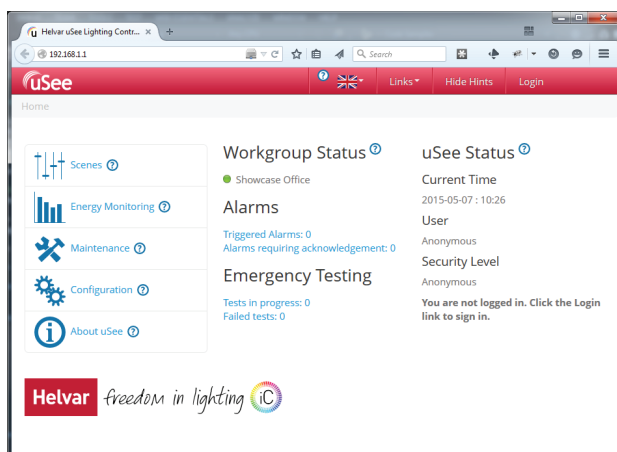
7. Accessing the uSee for the first time

7.1. 1. Connect your computer to the uSee network

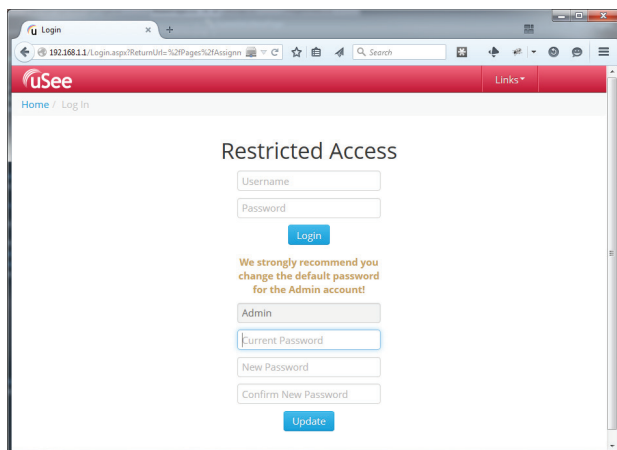
1. In the Windows notification area, click the network icon.
2. From the list of available wireless networks, select **HELVARuSee[Serial_number]**.
The serial number is printed on the label at the rear chassis of your uSee unit.

7.2. Change the default password of the Admin account

3. In the browser's address bar, type **192.168.1.1**, and then press **Enter** to display uSee's main screen.



4. Click **Configuration** to display the **Restricted Access** screen.

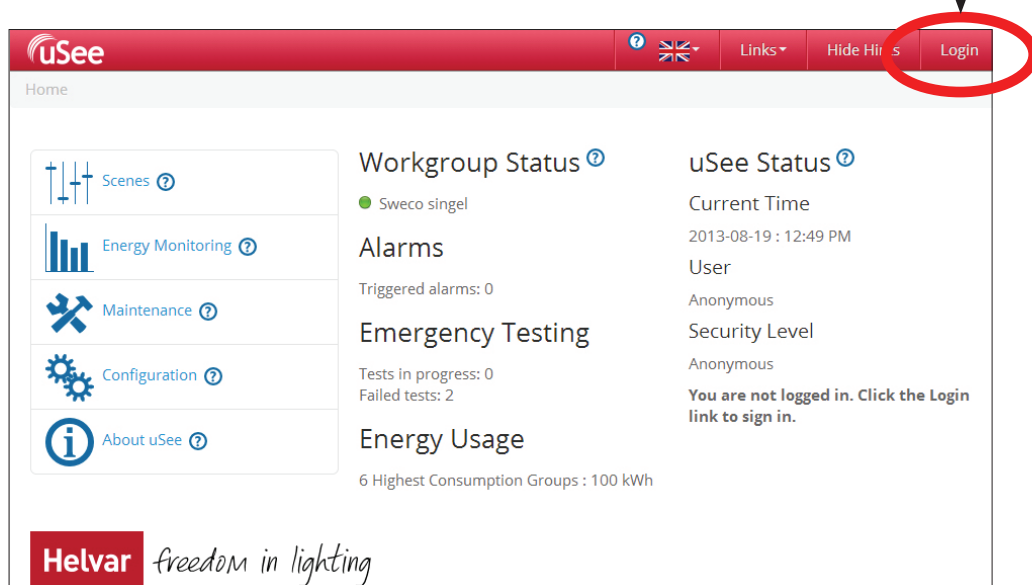


5. Note that the username for the Administrator account is **Admin**.
You cannot change this username.
6. In the **Current Password** text box, type **password**.
This is the default password.
7. In the **New Password** text box, type the new password that you want to use.
The new password must contain at least eight characters, at least one number, and at least one letter. It must not contain any special characters.
If you forget your password, contact your Helvar representative.
8. In the **Confirm New Password** text box, retype the password that you want to use.
9. Click the **Update** button.
uSee creates the Administrator account.
Once you have completed this task, the options below the **Login** button will not appear again.

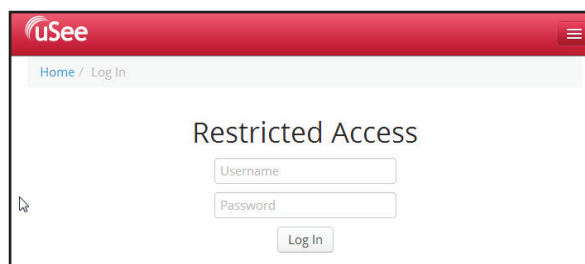
8. Logging in to the uSee

8.1. Log in to uSee

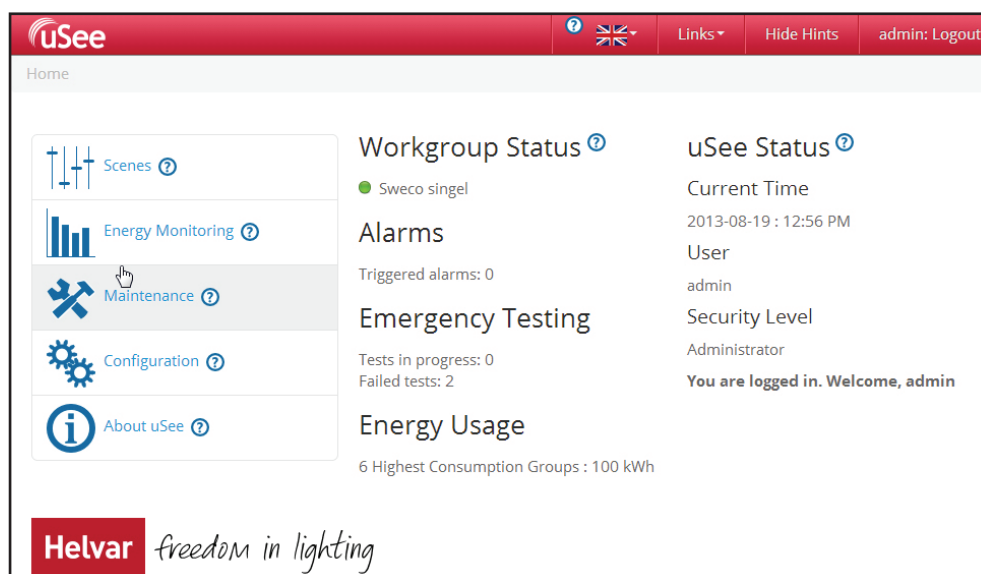
1. Click on the 'Login' link (top right of screen).



2. In the window that opens, enter the administrator username and password

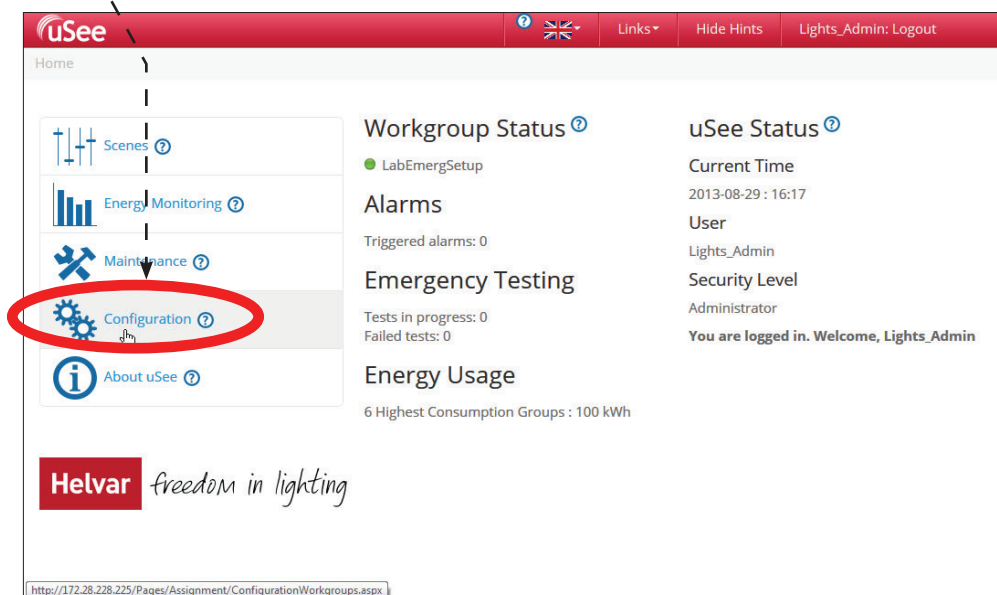


3. Click 'Log In' and the main screen is displayed. Now create two more user accounts: see next section.

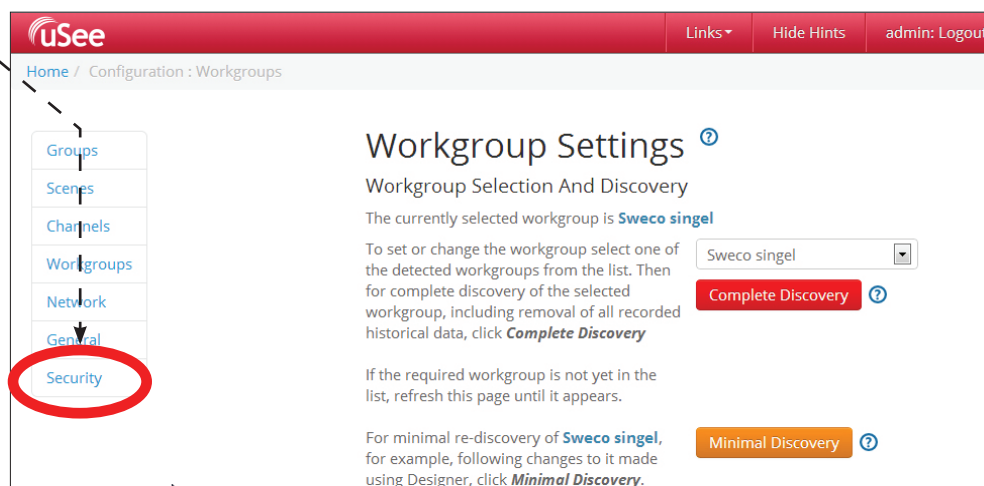


8.2: Create 'Editor' and 'BasicUser' Accounts

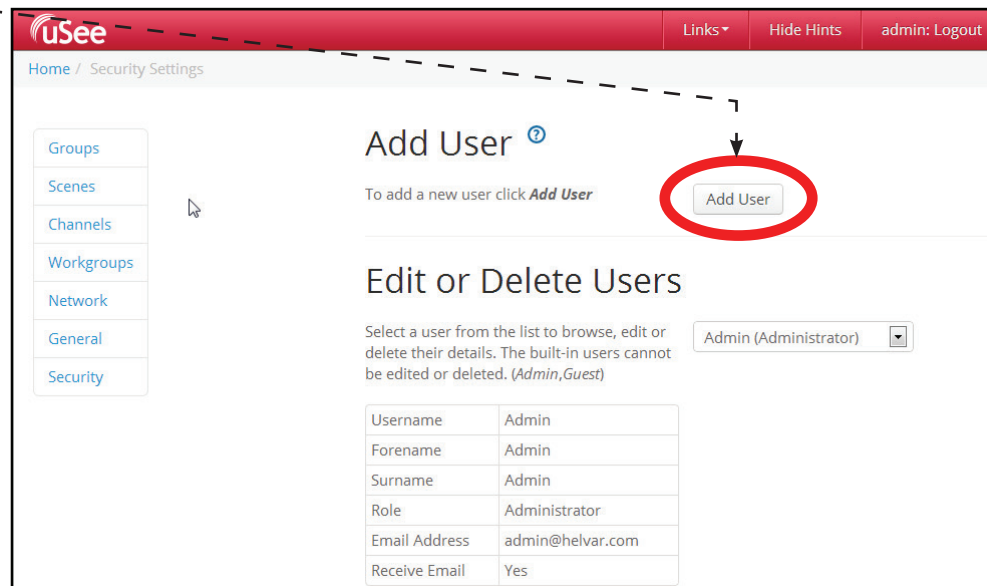
1. On the main screen, click 'Configuration'.



2. Click 'Security'.



3. Click 'Add User'.



4. Enter the user details (select the 'Editor' Role from the drop-down menu) and click Save:

Receive Email: if selected, this user will receive uSee system emails, such as alarm notifications.

Add User ×

Use the form below to enter the details for the user
Items marked with a * are required

<p>Username *</p> <input style="width: 90%;" type="text"/>	<p>Role</p> <div style="border: 1px solid #ccc; padding: 2px; display: inline-block;">Basic ▼</div>
<p>Forename</p> <input style="width: 90%;" type="text"/>	<p>Surname</p> <input style="width: 90%;" type="text"/>
<p>Password *</p> <input style="width: 90%;" type="password"/>	<p>Confirm Password *</p> <input style="width: 90%;" type="password"/>

Passwords must be at least 8 characters, contain at least one digit and one alphabetic character, and must not contain special characters

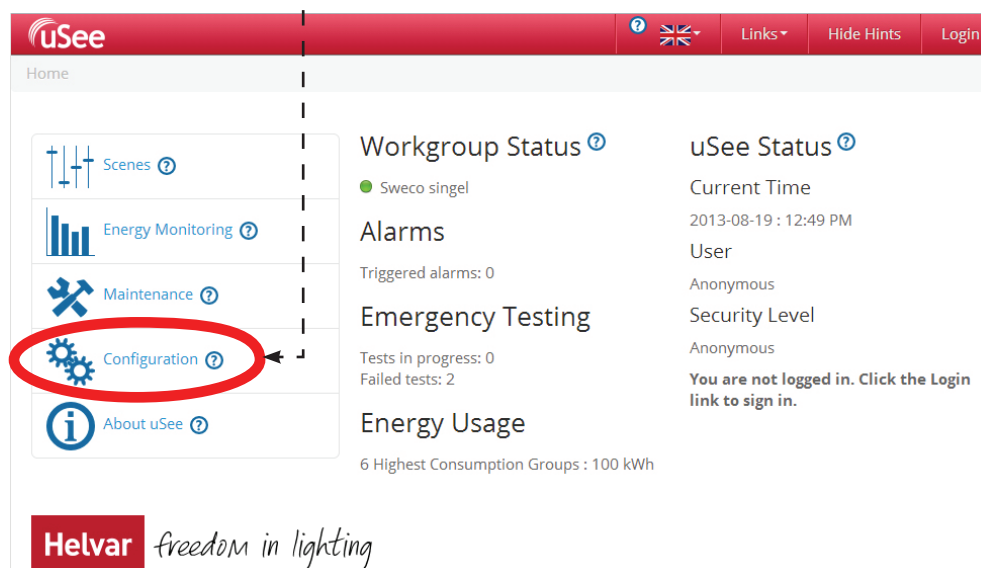
<p>Email *</p> <input style="width: 90%;" type="text"/>	<p>Receive Email <input type="checkbox"/></p>
--	--

5. Add another new user in the role of a 'Basic' User.
6. Return to the uSee main screen.

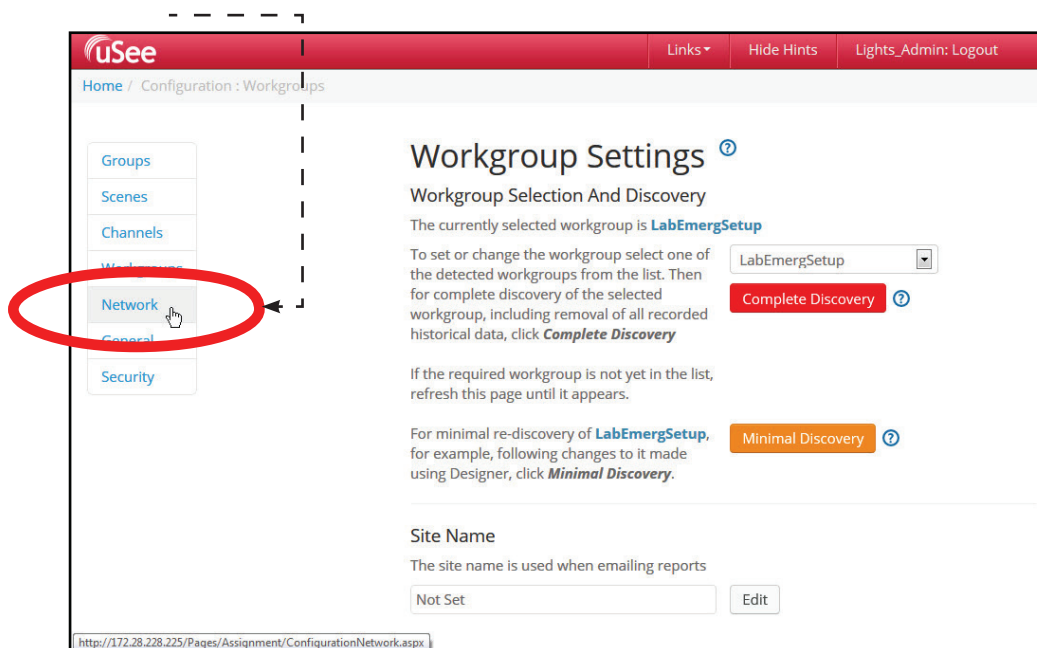
9. Configuring the uSee Wired Network Settings

9.1. Open the Configuration settings page

1. On the main screen, click 'Configuration'.

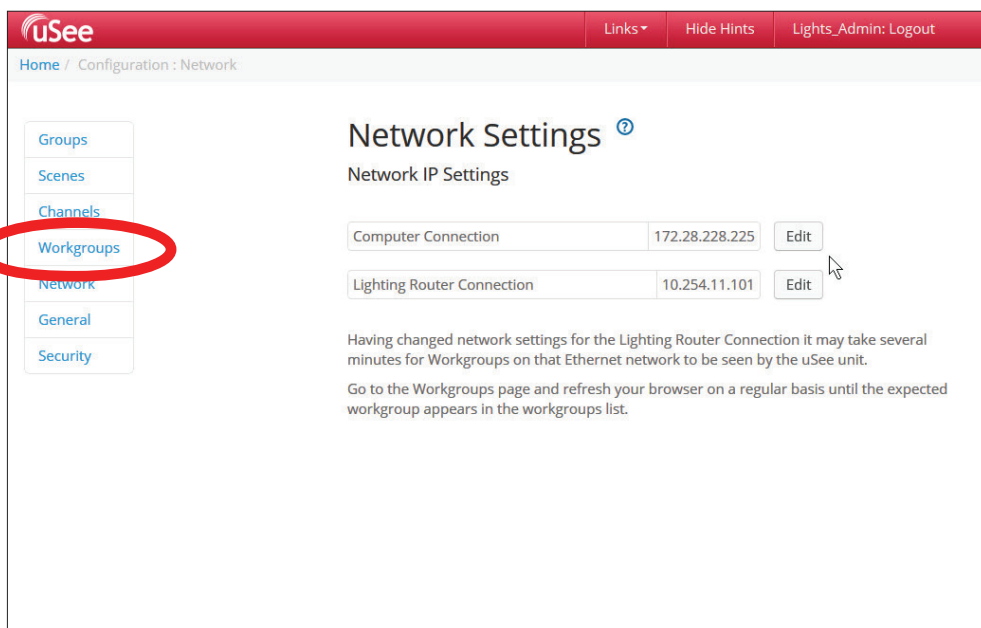


2. On the configuration screen, click 'Network'.



9.2. Edit 'Network Setup' settings in Configuration settings screen

1. On the Network settings screen, click the edit buttons and enter the Computer Connection IP address (IP address of the uSee unit) and the Lighting Router Connection IP address (connection from uSee unit to the lighting router).



Note 1:

Consult the network administrator or commissioning engineer for IP settings compatible with your LIGHTING ROUTER network.

Note 2:

Having changed network settings for the Lighting Router Connection it may take several minutes for Workgroups on that Ethernet network to be seen by the uSee unit. Go to the Workgroups page and refresh your browser on a regular basis until the expected workgroup appears in the workgroups list.

2. Check that the connection has been made: click the 'Workgroup Settings' bar.


When the connection is made, the workgroup name will appear in the drop-down list on the 'Workgroup Settings' section of the Configuration Settings page.

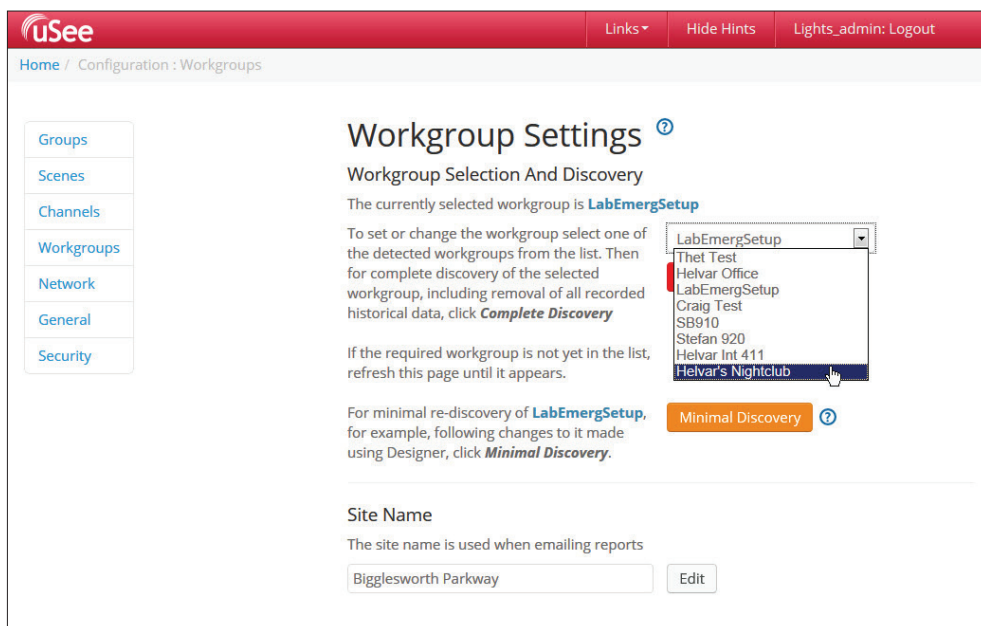
3. Click the drop-down list of workgroups.

4. When the connection is made, the workgroup name will appear in the list: select it.

5. Click 'Minimal Discover' or 'Complete Discovery'

6. Click 'Home' to return to the uSee main screen.

7. You can now control the lighting system using uSee: context-sensitive help is available by clicking the  icons.



Technical Data

Power

Mains supply voltage:	88 - 264 VAC; 47 - 63 Hz
Power consumption:	14 W
Protection:	Max. 6 A MCB
Supply current:	0.55 A / 230 V

Cable Requirements

Gland cable range:	Diameter: 5 - 10 mm
--------------------	---------------------

Mechanical Data

Dimensions (mm):	279 x 59 x 234
Weight:	2.5 kg
IP rating:	IP 20

Installation

Mounting:	Wall mounted. Refer to mounting dimensions and clearance diagrams
-----------	---

Operating and Storage Conditions

Ambient Temperature:	0°C to 40°C
Storage Temperature:	-10°C to 70°C
Relative Humidity:	Max 90%, non-condensing

Conformity and Standards

EMC	Emission:	EN 55022
	Immunity:	EN 61000
Safety:		EN 60950
Isolation:		3 kV
Environmental:		Complies with WEEE and RoHS directives
Class A product:		This is a Class A product. In a domestic environment this product may cause radio interference in which case the user may be required to take adequate measures.

www.helvar.com